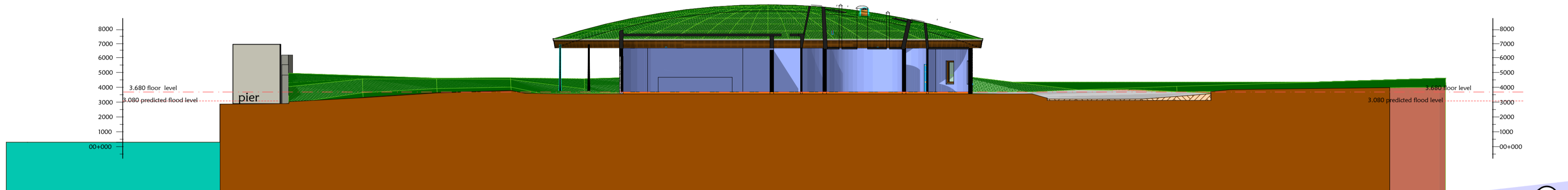
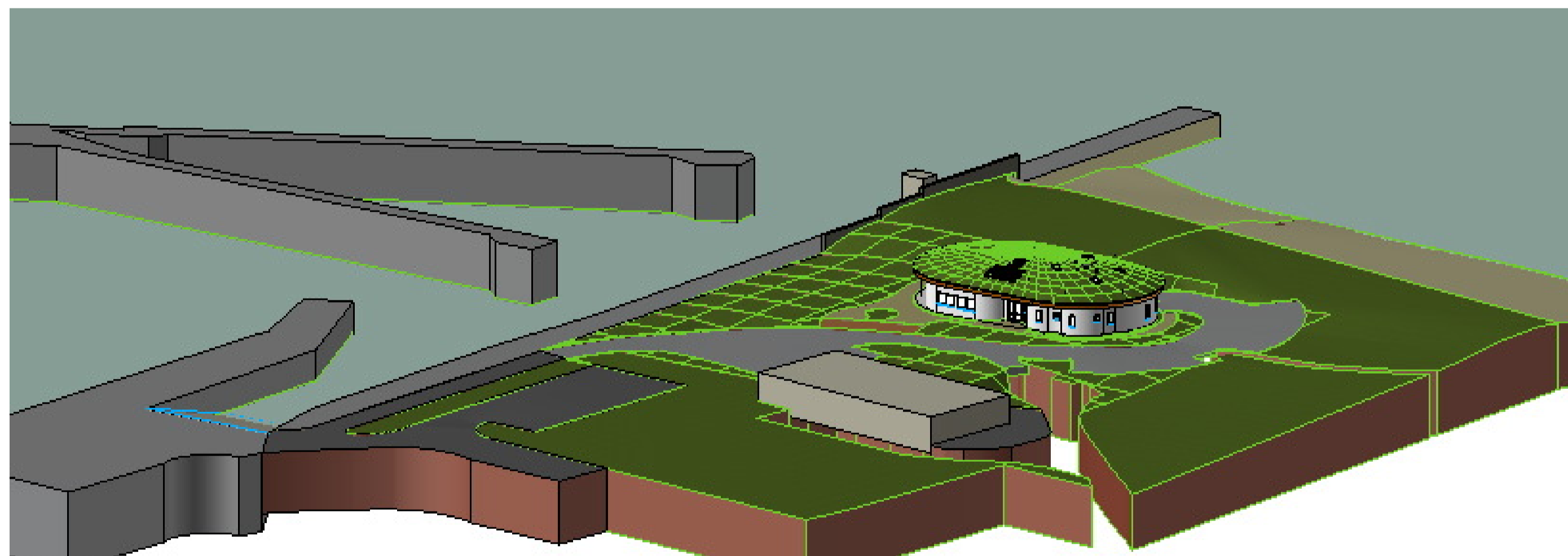


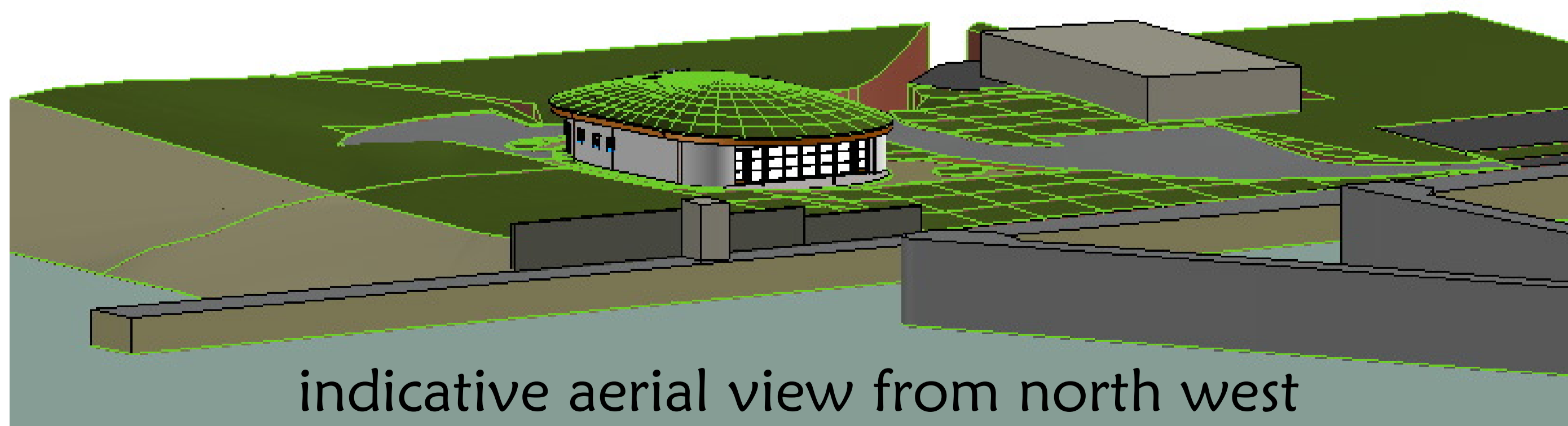
section north to south (looking east)



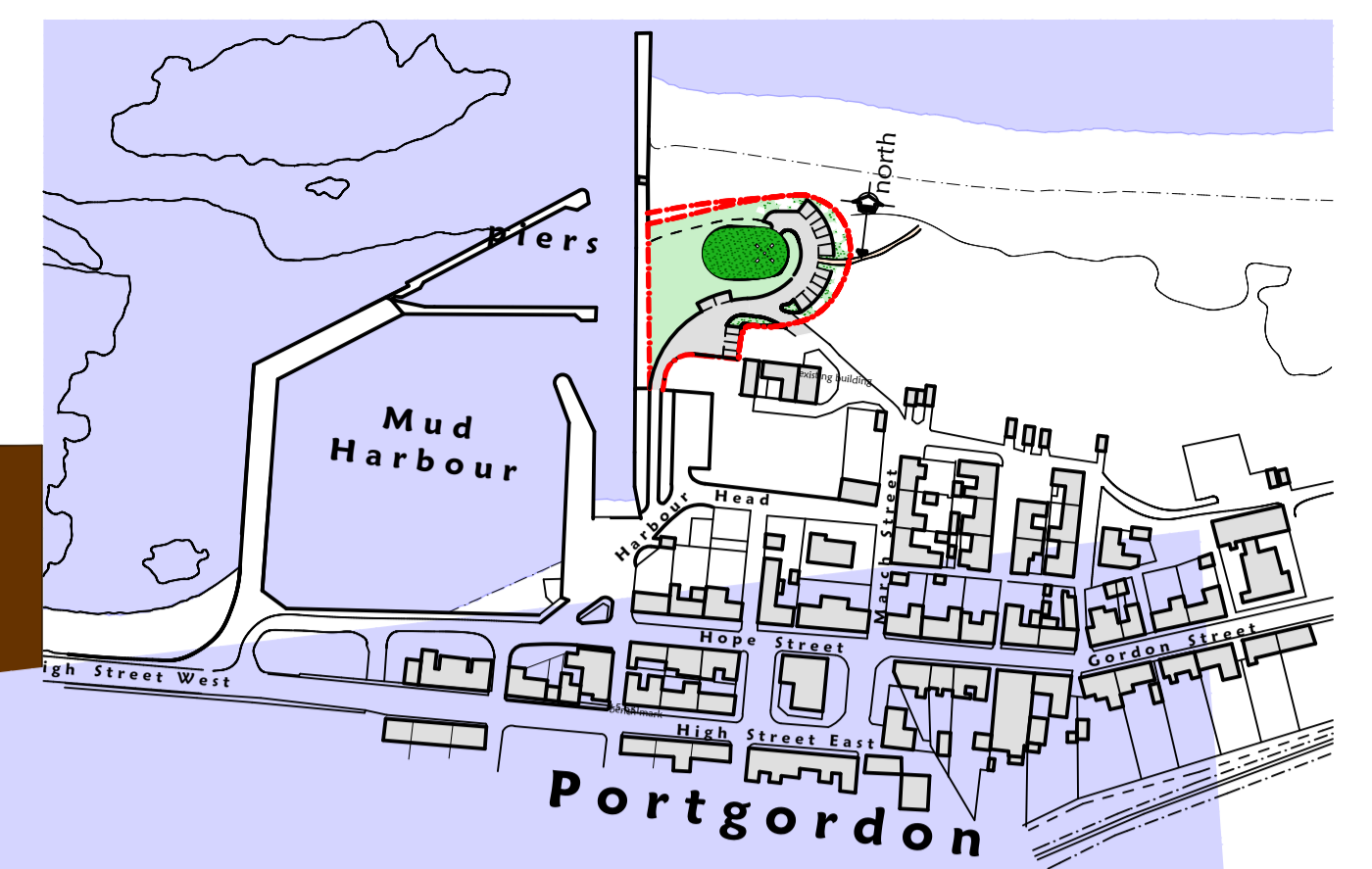
section west to east ( looking north)



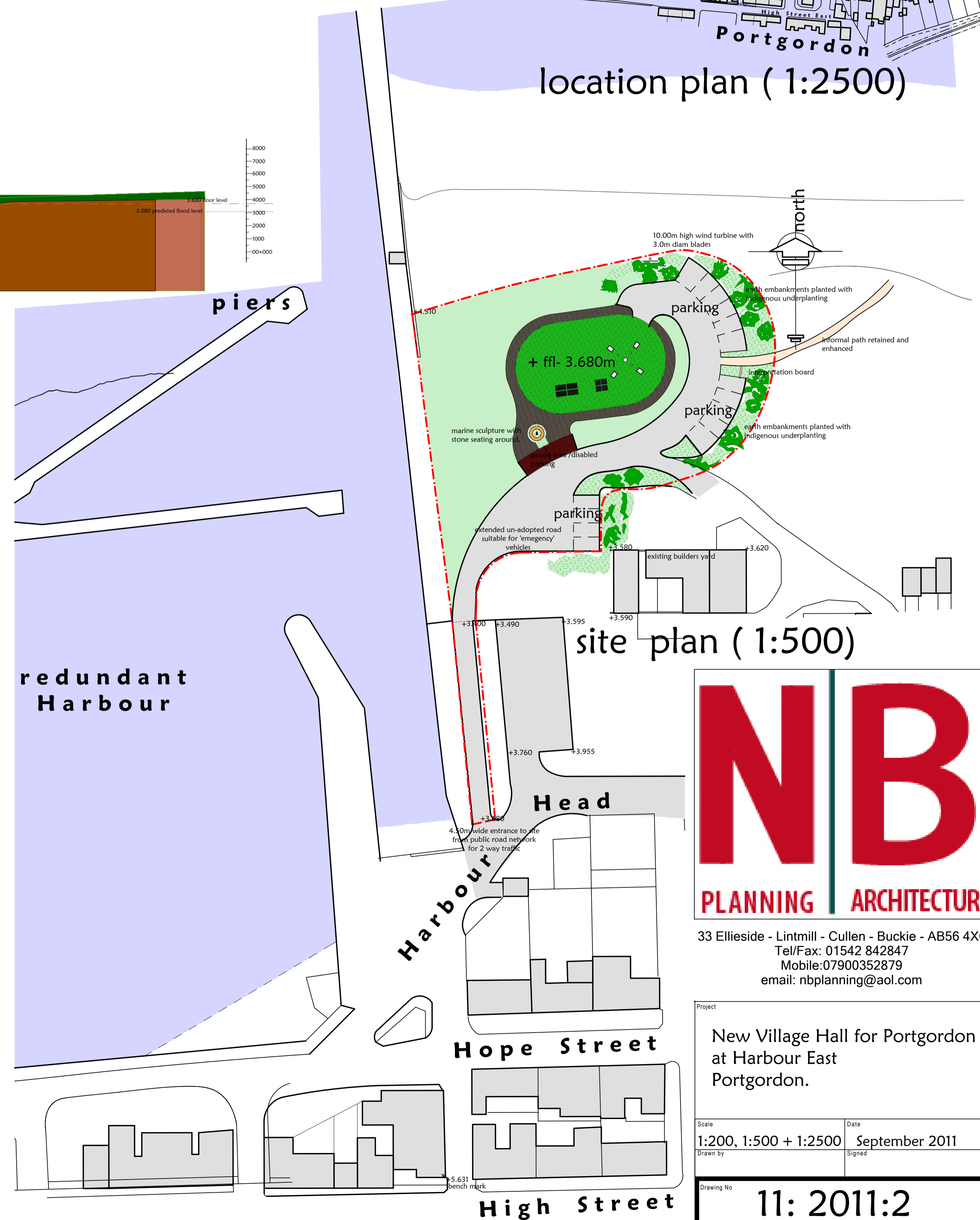
indicative aerial view from south east



indicative aerial view from north west



location plan ( 1:2500)



site plan ( 1:500)



33 Ellieside - Lintmill - Cullen - Buckie - AB56 4XQ  
 Tel/Fax: 01542 842847  
 Mobile:07900352879  
 email: nbplanning@aol.com

Project New Village Hall for Portgordon at Harbour East Portgordon.	
Scale 1:200, 1:500 + 1:2500	Date September 2011
Drawn by	Signed
Drawing No <b>11: 2011:2</b>	

© copyright of NBPA