

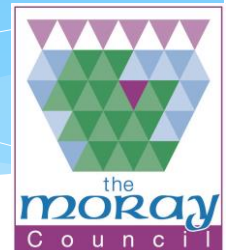
CPOG

11th November 2016

Applying the Community Planning Outcomes Profile (CPOP) Tool to Moray communities

Presented to:

- Prevention Working Group - 7th Sep 16
- Community Engagement Group - 1st Nov 16

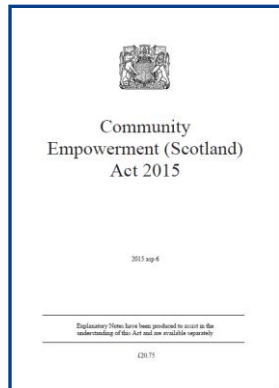


Contents

- * Locality Planning - context
- * Introduction to the Community Planning Outcomes Profile (CPOP) Tool
- * Comparing Outcomes for selected Moray Communities
 - * New Elgin West & New Elgin East
 - * Comparison of outcomes – using CPOP tool
 - * Comparison of relative deprivation – SIMD tool
- * Summary

Locality Planning

Legislation



Identifying Localities

- * Natural communities
- * Community has:
 - * Significant inequalities of outcome
 - * Socio-economic disadvantage
- * Strong, robust understanding of:
 - * Local needs
 - * Local circumstances
 - * Community aspirations



Tools

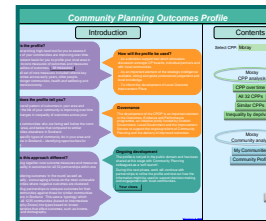
Clear, evidence-based:

1. Community Profiles



2. CPOP

- * Compare outcomes



Locality Plans

LOCALITY PLAN

- Promote prevention
- Reduce inequalities
- Build community capacity

- * Clear priorities:
 - * Improving local outcomes
 - * Tackling inequalities
- * CPP and community agreement
- * Outcomes:
 - * Long-term (10 year)
- * Indicators/Targets:
 - * Short-term (1 year)
 - * Medium-term (3 years)
- * Partner resources

Community Planning Outcomes Profile

Introduction

What is the profile?
 A reporting, high level tool for you to monitor if your communities are improving over time. It's a good basis for you to profile your local area in 10 core measures of outcomes and measures of quality of outcomes. **All measures** will set outcome measures and identify key points to focus early years, older people, younger communities, health and wellbeing and community.

How will the profile be used?
 As a decision support tool with suitable discussion amongst Councillors, individual partners and with local communities.
 - As an important element of the strategic intelligence available, setting strategic professional judgement and local knowledge.
 - To inform the development of Local Outcome Improvement Plans.

Does the profile tell you?
 Whether a pattern of outcomes is improving over time emerges in inequality of outcomes across your communities who are doing well below the norm will be below that compared to similar communities in Scotland.
 Specific types of community in your area and if in Scotland - identifying opportunities for.

Is this approach different?
 Bringing together core outcome measures and measures of quality in outcomes or all 12 partnerships within one profile. In the future as well as identifying a focus on the most vulnerable areas where negative outcomes are clustered. Working partnerships to complete outcomes for their communities will help for similar communities across Scotland. This uses a typology which will 12-15 communities (based on their immediate City Zones) into types based on similar profiles that help partners, such as income, and geography.

Governance
 The development of the CPOR is an important element in the Outcomes, Evidence and Performance programme, an initiative jointly funded by Scottish Government, Local Government and the Improvement Service to support the ongoing reform of Community Planning and the delivery of improved outcomes.

Ongoing development
 This profile is not yet in the public domain and has been shared at this stage with Community Planning colleagues as a 'soft launch'. During this next phase, work will continue with partnerships to refine the profile and test out how the information might be used to support decision making and engagement with local communities.

Your views

Contents

Select CPP: **Moray**

Moray
CPP analysis

CPP over time

All 32 CPPs

Similar CPPs

Inequality by deprivation

Moray
Community analysis

My Communities

Community Profile

Raw

Tool created by the Improvement Service

- Uses existing data sources
- Allows quick overview comparisons between communities throughout Scotland
- Identifies vulnerable communities and those improving most

6 Life Outcomes using 16 Measures

Life Outcome	Measure
Early Years	
Children have the best start in life, so that they have equal opportunities to succeed. Children are safe and nurtured, and have the life skills, confidence and opportunities to reach their potential. Young people are ready for life and work.	<ol style="list-style-type: none"> 1. % of babies at healthy birth weight 2. Body Mass Index (BMI) of Primary 1 school children 3. S4 Tariff Score 4. % school leavers in positive and sustained destinations
Older People	
Older people are independent for longer and able to stay in their own homes as long as they wish.	5. Emergency hospital admissions per 100,000 population (65+)
Employment & Economic Growth	
Employment opportunities for all. People have satisfying, secure and suitable work. People live in a community with a thriving, expanding economy. People have the means to support themselves and their families with a standard of living that enables them to participate in society after paying all necessary bills.	<ol style="list-style-type: none"> 6. Employment rate 7. Median earnings for residents in LA area who are employed 8. % of population (aged 16-64) in receipt of out of work benefits 9. % of Children in poverty 10. Survival of newly born enterprises (3 year survival)
Safer & Stronger Communities	
People live in resilient, responsible and safe communities. People in vulnerable circumstances are protected. Community and public understand the role/place of public services. People feel engaged and feel they can influence their community. People do not feel isolated or lonely.	<ol style="list-style-type: none"> 11. Rate of recorded crimes per 10,000 population 12. Total dwelling fires per 100,000 population
Health & wellbeing	
People live happy and healthy lives with a healthy life expectancy. People who need care are supported to live independently and confidently. Positive end of life.	<ol style="list-style-type: none"> 13. Mortality rates per 100,000 for people aged under 75 in Scotland 14. Average score on the short version of the Warwick-Edinburgh Mental Wellbeing scale (SWEMWBS) 15. Unplanned Emergency Hospital attendancies
Environment	
People live in attractive, welcoming environments. People take pride in and look after their environment.	16. Carbon Emissions per capita

Selection of Measures

The criteria used to shortlist the measures were:

- Policy salience and relevance for prevention, outcome improvement and inequality reduction
- Localness
- Timeliness and longevity
- Create either a basis for action or provide context within which to target action

Limitation:

Much of the data is 2 or 3 years old

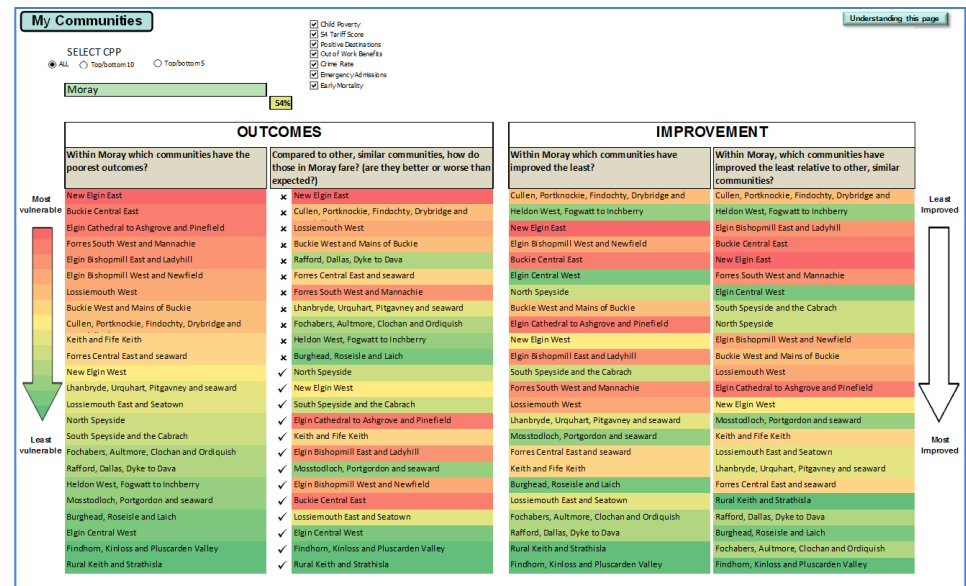
Gaps and Limitations

A work in progress

- * Measures chosen after consultation with stakeholders, e.g. CPPs
- * Output profile will be reviewed and updated with stakeholders
- * No consistent measure of outcomes currently available for:
 - * social inclusion/ loneliness
 - * community empowerment/ resilience
 - * early years development
 - * emotional and physical wellbeing
 - * lived experience in local environments
- Data timeliness
- Some key measures can't be disaggregated to local level

Comparing Community Outcomes

- * **Outcomes** – Within Moray which communities have the poorest outcomes?
- * **Outcomes** – Compared to other, similar communities, how do those in Moray fare?
- * **Improvement** – Within Moray which communities have improved the least?
- * **Improvement** – Within Moray, which communities have improved the least relative to other, similar communities?



Moray Communities – Vulnerability Ranking

My Communities

Understanding this page

SELECT CPP

ALL Top/bottom 10 Top/bottom 5

Moray

54%

- Child Poverty
- S4 Tariff Score
- Positive Destinations
- Out of Work Benefits
- Crime Rate
- Emergency Admissions
- Early Mortality

OUTCOMES

Within Moray which communities have the poorest outcomes?	Compared to other, similar communities, how do those in Moray fare? (are they better or worse than expected?)
New Elgin East	New Elgin East
Buckie Central East	✗ Cullen, Portknockie, Findochty, Drybridge and Lossiemouth West
Elgin Cathedral to Ashgrove and Pinefield	✗ Buckie West and Mains of Buckie
Forres South West and Mannachie	✗ Rafford, Dallas, Dyke to Dava
Elgin Bishopmill East and Ladyhill	✗ Forres Central East and seaward
Elgin Bishopmill West and Newfield	✗ Forres South West and Mannachie
Lossiemouth West	✗ Lhanbryde, Urquhart, Pitgavney and seaward
Buckie West and Mains of Buckie	✗ Fochabers, Aultmore, Clochan and Ordiquish
Cullen, Portknockie, Findochty, Drybridge and Keith and Fife Keith	✗ Heldon West, Fogwatt to Inchberry
Forres Central East and seaward	✗ Burghead, Roseisle and Laich
New Elgin West	✓ North Speyside
Lhanbryde, Urquhart, Pitgavney and seaward	✓ New Elgin West
Lossiemouth East and Seatown	✓ South Speyside and the Cabrach
North Speyside	✓ Elgin Cathedral to Ashgrove and Pinefield
South Speyside and the Cabrach	✓ Keith and Fife Keith
Fochabers, Aultmore, Clochan and Ordiquish	✓ Elgin Bishopmill East and Ladyhill
Rafford, Dallas, Dyke to Dava	✓ Mosstodloch, Portgordon and seaward
Heldon West, Fogwatt to Inchberry	✓ Elgin Bishopmill West and Newfield
Mosstodloch, Portgordon and seaward	✓ Buckie Central East
Burghead, Roseisle and Laich	✓ Lossiemouth East and Seatown
Elgin Central West	✓ Elgin Central West
Findhorn, Kinloss and Pluscarden Valley	✓ Findhorn, Kinloss and Pluscarden Valley
Rural Keith and Strathisla	✓ Rural Keith and Strathisla

IMPROVEMENT

Within Moray which communities have improved the least?	Within Moray, which communities have improved the least relative to other, similar communities?
Cullen, Portknockie, Findochty, Drybridge and Heldon West, Fogwatt to Inchberry	Cullen, Portknockie, Findochty, Drybridge and Heldon West, Fogwatt to Inchberry
New Elgin East	Elgin Bishopmill East and Ladyhill
Elgin Bishopmill West and Newfield	Buckie Central East
Buckie Central East	New Elgin East
Elgin Central West	Forres South West and Mannachie
North Speyside	Elgin Central West
Buckie West and Mains of Buckie	South Speyside and the Cabrach
Elgin Cathedral to Ashgrove and Pinefield	North Speyside
New Elgin West	Elgin Bishopmill West and Newfield
Elgin Bishopmill East and Ladyhill	Buckie West and Mains of Buckie
South Speyside and the Cabrach	Lossiemouth West
Forres South West and Mannachie	Elgin Cathedral to Ashgrove and Pinefield
Lossiemouth West	New Elgin West
Lhanbryde, Urquhart, Pitgavney and seaward	Mosstodloch, Portgordon and seaward
Mosstodloch, Portgordon and seaward	Keith and Fife Keith
Forres Central East and seaward	Lossiemouth East and Seatown
Keith and Fife Keith	Lhanbryde, Urquhart, Pitgavney and seaward
Burghead, Roseisle and Laich	Forres Central East and seaward
Lossiemouth East and Seatown	Rural Keith and Strathisla
Fochabers, Aultmore, Clochan and Ordiquish	Rafford, Dallas, Dyke to Dava
Rafford, Dallas, Dyke to Dava	Burghead, Roseisle and Laich
Rural Keith and Strathisla	Fochabers, Aultmore, Clochan and Ordiquish
Findhorn, Kinloss and Pluscarden Valley	Findhorn, Kinloss and Pluscarden Valley

Most vulnerable
Least vulnerable

Least Improved
Most Improved

Selecting Communities of Interest

- * Similar communities with different outcomes:

- * Pair 1

New Elgin East
New Elgin West

- * Pair 2

Buckie Central East
Buckie West and Mains of Buckie

- * Pair 3

Lossiemouth West
Lossiemouth East and Seatown

- * Pair 4

Keith and Fife Keith
Rural Keith and Strathisla

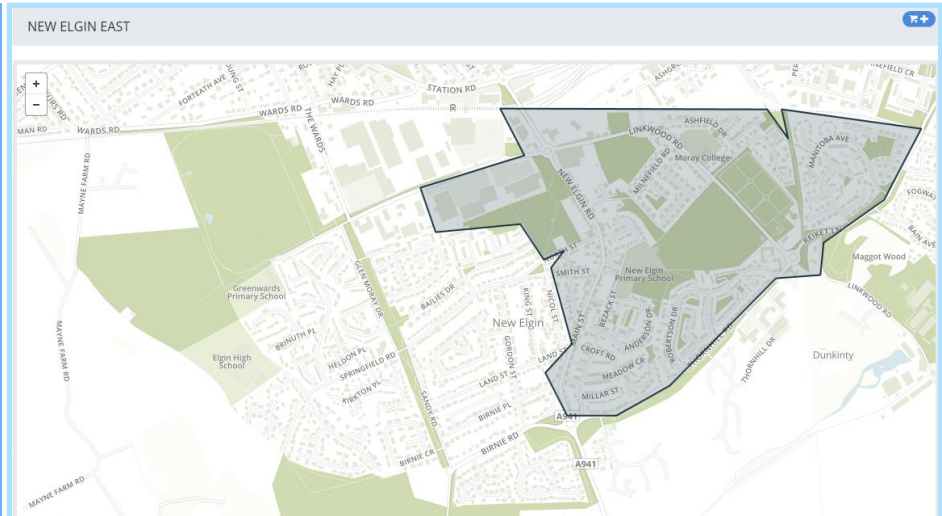
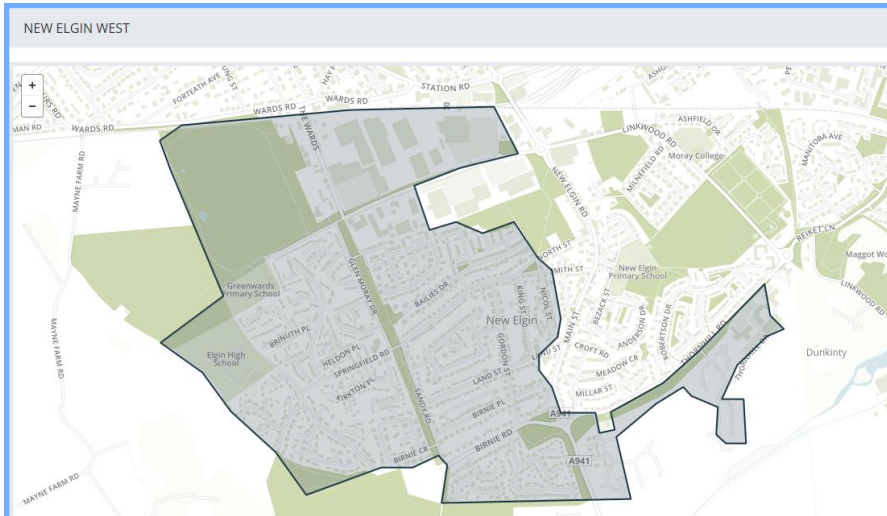
New Elgin East & New Elgin West exhibit largest differences out of this sample and both in same community type

New Elgin West & East

Close neighbours – Different outcomes

New Elgin West

New Elgin East



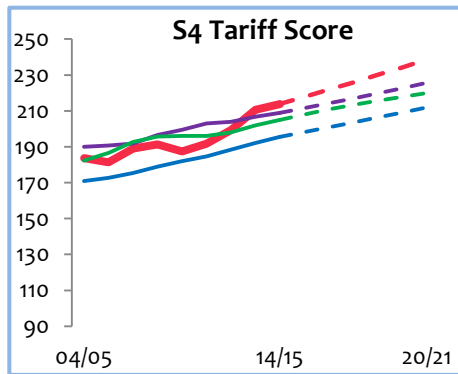
Comparator group description:

- Other Urban (settlements of 10,000 to 125,000 people)
- Community population structure – Typical
- Median Household Income within 60-100% range of all communities in Scotland

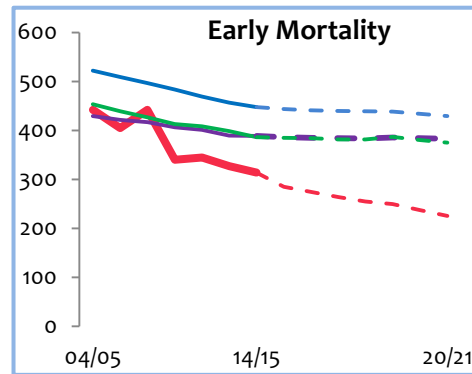
New Elgin West & New Elgin East - Different Outcomes

New Elgin West

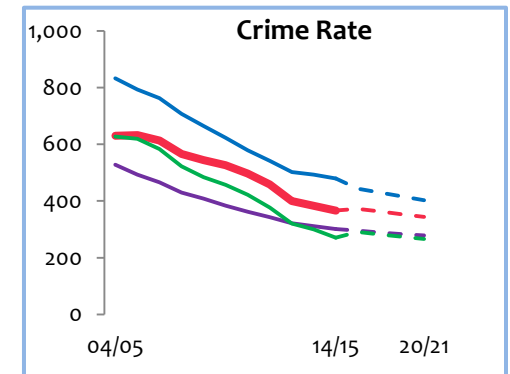
S4 Tariff Score



Early Mortality

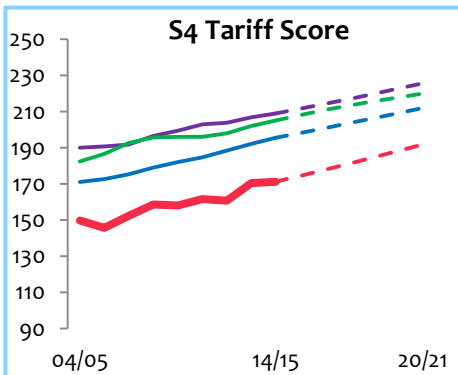


Crime Rate

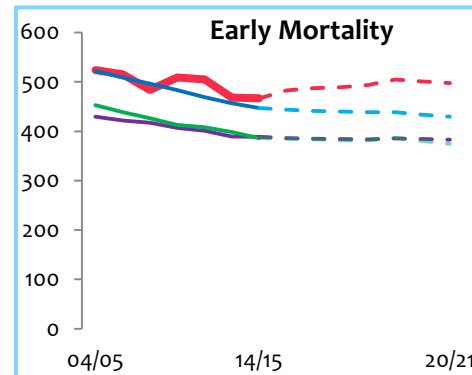


New Elgin East

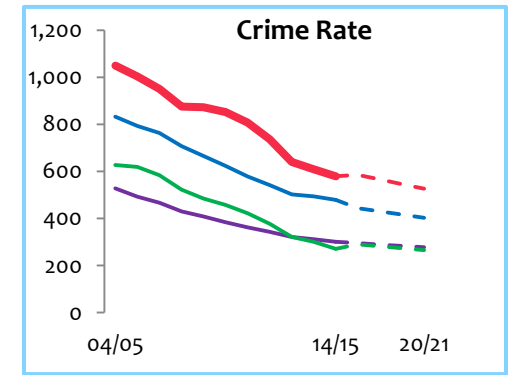
S4 Tariff Score



Early Mortality



Crime Rate



KEY TO CHARTS

New Elgin (West/East)	—
Group Average	—
Moray	—
Scotland	—

Comparison with similar Scottish communities

Comparator group description: (22 communities in the group)

- Other Urban (settlements of 10,000 to 125,000 people)
- Community population structure – Typical
- Household Income 60-100%

New Elgin West & New Elgin East Combined outcomes

New Elgin West

How does a selected community in Moray compare to similar communities in Scotland?
Moray - New Elgin East
East Dunbartonshire - Harestanes
North Lanarkshire - Greenfaulds
Midlothian - Bonnyrigg South
South Lanarkshire - Nerston and EK Landward Area
Renfrewshire - Erskine Central
South Ayrshire - Heathfield
South Lanarkshire - Hairmyres and Westwood West
Angus - Arbroath Kirkon
South Ayrshire - Castlehill and Kincaidston
Moray - New Elgin West
West Lothian - Bathgate West
Aberdeenshire - Stonehaven South
South Lanarkshire - Merryton and Meadowhill
Midlothian - Penicuik Southwest
Aberdeenshire - Inverurie North
Falkirk - Stenhousemuir East
East Dunbartonshire - Lenzie North
West Lothian - Linlithgow Bridge
Perth & Kinross - Viewlands, Craigie and Wellshill
Falkirk - Larbert Village and South Broomage
Aberdeenshire - Stonehaven North

How does the improvement rate of a selected community in Moray compare to similar communities in Scotland?
Midlothian - Penicuik Southwest
East Dunbartonshire - Lenzie North
Aberdeenshire - Inverurie North
Perth & Kinross - Viewlands, Craigie and Wellshill
South Lanarkshire - Nerston and EK Landward Area
South Ayrshire - Heathfield
North Lanarkshire - Greenfaulds
West Lothian - Linlithgow Bridge
Moray - New Elgin East
South Lanarkshire - Hairmyres and Westwood West
Midlothian - Bonnyrigg South
Renfrewshire - Erskine Central
Aberdeenshire - Stonehaven North
Aberdeenshire - Stonehaven South
Falkirk - Stenhousemuir East
Moray - New Elgin West
Falkirk - Larbert Village and South Broomage
Angus - Arbroath Kirkon
South Lanarkshire - Merryton and Meadowhill
West Lothian - Bathgate West
East Dunbartonshire - Harestanes
South Ayrshire - Castlehill and Kincaidston



New Elgin East

How does a selected community in Moray compare to similar communities in Scotland?
Moray - New Elgin East
East Dunbartonshire - Harestanes
North Lanarkshire - Greenfaulds
Midlothian - Bonnyrigg South
South Lanarkshire - Nerston and EK Landward Area
Renfrewshire - Erskine Central
South Ayrshire - Heathfield
South Lanarkshire - Hairmyres and Westwood West
Angus - Arbroath Kirkon
South Ayrshire - Castlehill and Kincaidston
Moray - New Elgin West
West Lothian - Bathgate West
Aberdeenshire - Stonehaven South
South Lanarkshire - Merryton and Meadowhill
Midlothian - Penicuik Southwest
Aberdeenshire - Inverurie North
Falkirk - Stenhousemuir East
East Dunbartonshire - Lenzie North
West Lothian - Linlithgow Bridge
Perth & Kinross - Viewlands, Craigie and Wellshill
Falkirk - Larbert Village and South Broomage
Aberdeenshire - Stonehaven North



How does the improvement rate of a selected community in Moray compare to similar communities in Scotland?
Midlothian - Penicuik Southwest
East Dunbartonshire - Lenzie North
Aberdeenshire - Inverurie North
Perth & Kinross - Viewlands, Craigie and Wellshill
South Lanarkshire - Nerston and EK Landward Area
South Ayrshire - Heathfield
North Lanarkshire - Greenfaulds
West Lothian - Linlithgow Bridge
Moray - New Elgin East
South Lanarkshire - Hairmyres and Westwood West
Midlothian - Bonnyrigg South
Renfrewshire - Erskine Central
Aberdeenshire - Stonehaven North
Aberdeenshire - Stonehaven South
Falkirk - Stenhousemuir East
Moray - New Elgin West
Falkirk - Larbert Village and South Broomage
Angus - Arbroath Kirkon
South Lanarkshire - Merryton and Meadowhill
West Lothian - Bathgate West
East Dunbartonshire - Harestanes
South Ayrshire - Castlehill and Kincaidston

West

11th most vulnerable
7th most improved

East

Most vulnerable
14th most improved

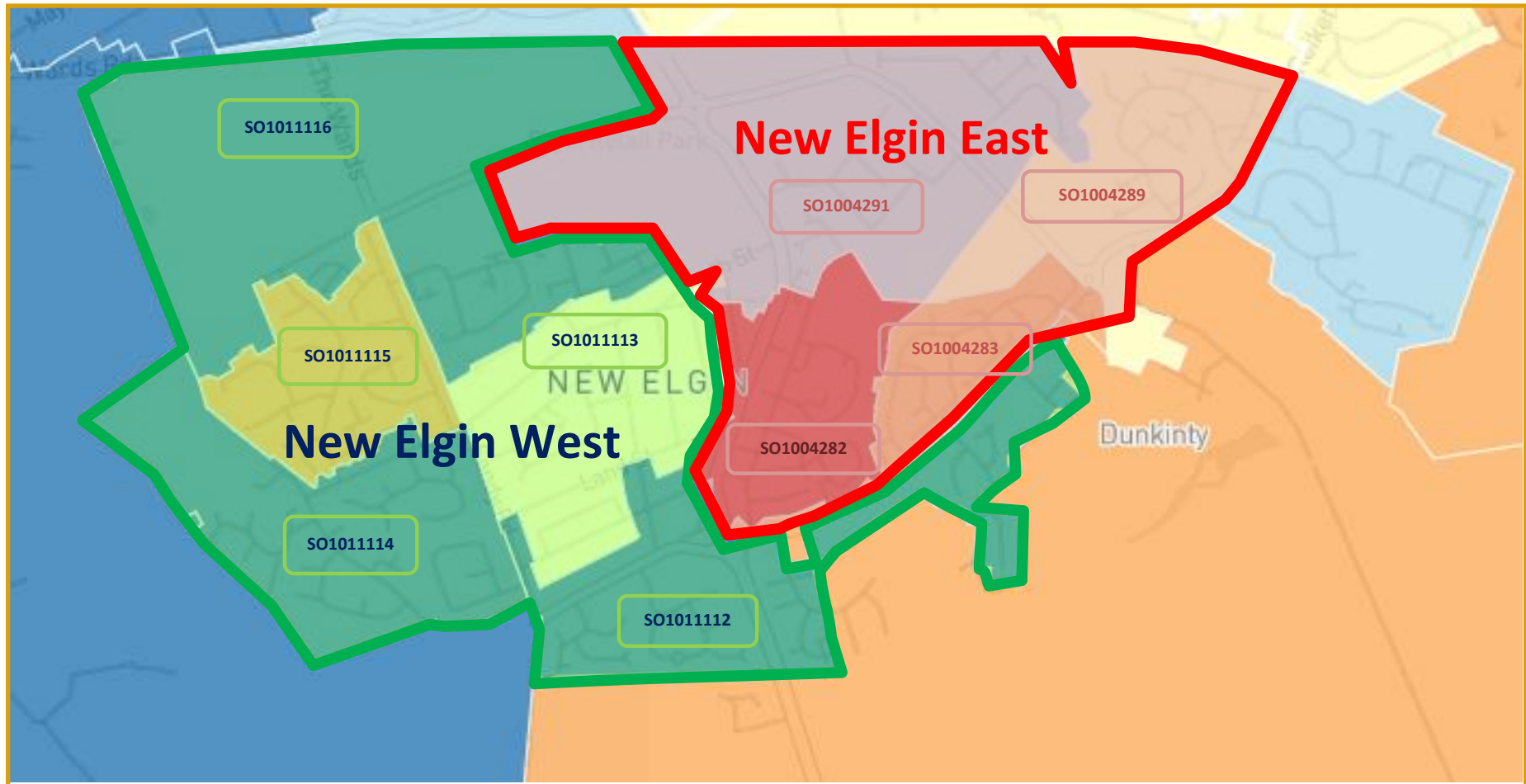
Summary

	Child Poverty (2012/13)	S4 Tariff Score (2010/11 – 2012/13)	Positive Destinations (2012/13)	Out-of-work Benefits (16-64 year olds) (2012/13)	Crime Rate per 10,000 (2010/11)	Emergency Admissions per 10,000 (2012/13)	Early Mortality (2013/14)	Overall
New Elgin West	10.4%	199 pts	88.9%	12.7%	391	20,500	314	11th most vulnerable
New Elgin East	16.1%	160 pts	83.3%	16.9%	643	21,878	467	Most vulnerable
Least vulnerable comparator community	Falkirk - Larbert Village and South Broomage	Falkirk - Larbert Village and South Broomage	Aberdeenshire - Stonehaven North	Aberdeenshire - Stonehaven North	Aberdeenshire - Inverurie North	Aberdeenshire - Stonehaven North	South Lanarkshire - Merryton and Meadowhill	Aberdeenshire - Stonehaven North
Outcome	4.8%	237 pts	98.5%	6%	112	18,875	276	
Most vulnerable comparator community	Midlothian - Bonnyrigg South	New Elgin East	New Elgin East	East Dunbartonshire - Harestanes	New Elgin East	South Lanarkshire - Nerston and EK Landward Area	East Dunbartonshire - Harestanes	New Elgin East
Outcome	21.4%	160 pts	83.3%	19.8%	643	32,719	501	
Moray	11.4%	198 pts	92.3%	12.3%	434	18,535	389	
Scotland	17.5%	188 pts	90%	18.5%	614	25,525	447	

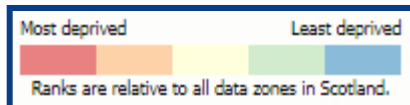
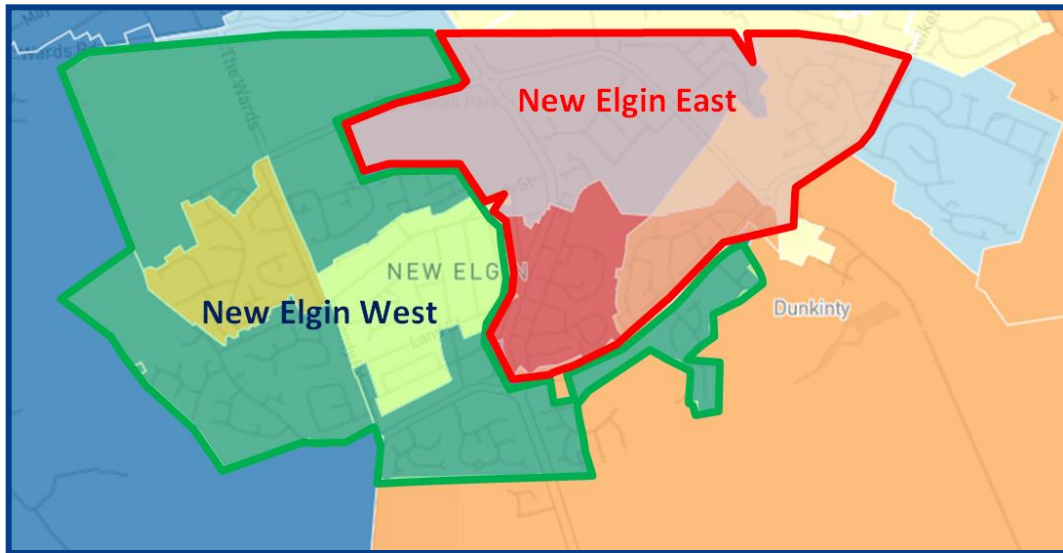
Comparison with Scottish Index of Multiple Deprivations Data

Based on “best-fit” SIMD datazones
Scotland comprises 6,976 datazones, each
with approximately 760 residents

Datazones matching most closely to intermediate geographies for New Elgin East & West



Multiple deprivations – All Measures

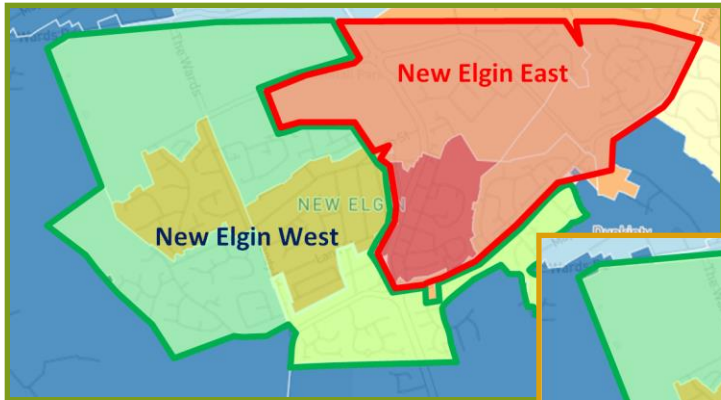


SIMD Measures:

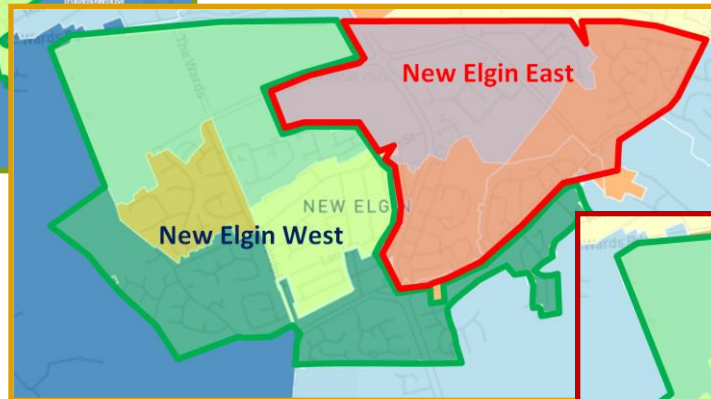
- Income
- Employment
- Health
- Education, skills & training
- Housing
- Geographic access to services
- Crime

Differences in relative deprivation

Education, skills & training



Health



Crime



Divergence in relative deprivation

Most deprived Least deprived
Ranks are relative to all data zones in Scotland.

Summary

- * New Elgin East and New Elgin West
 - * Similar communities
 - * Markedly different outcomes
 - * Differences possibly linked to 2 residential areas within New Elgin East

Development of Locality Plan(s)

How?

- * CPOP
- * SIMD
- * Other data sources

Where?

- * Elgin High ASG
- * Other ASGs

Who?

- * Prevention WG
- * LMGs
- * CS Hub
- * Other?