

Community Profile

Mosstodloch Milne's ASG/LMG



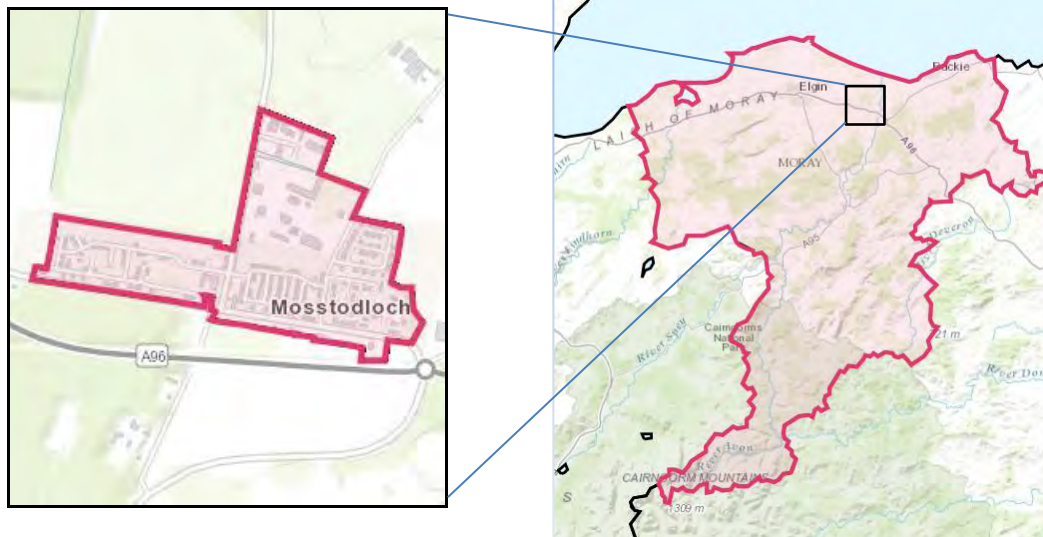
**Moray
Community Planning
Partnership**



Mosstodloch, Moray

Area profile

Mosstodloch is a small village in Moray, lying near the A96 between Fochabers and Elgin on the west bank of the River Spey. It has a primary school, Mosstodloch Primary School. Its secondary pupils would usually attend Milne's High School in Fochabers. Construction work on a bypass for Mosstodloch and the neighbouring village of Fochabers, costing £31.5m, started in February 2010 and the Mosstodloch section opened in September 2011. The project was significantly delayed due to conflict regarding the proposed route, and discovery of a Neolithic settlement on the site of the bypass.



© Crown Copyright 2016

Corporate Policy Unit
The Moray Council
December 2016

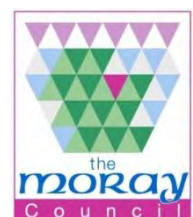


Table of Contents

1	Population Structure	4
1.1	Age profile.....	4
1.2	Marital Status	6
2	Identity	7
2.1	Ethnicity	7
2.2	Country of Birth	8
2.3	Religion.....	8
2.4	Length of residency for residents born overseas	9
2.5	Language.....	9
3	Housing	10
3.1	Tenure and House Type	11
3.2	Transport	12
4	Economy and Labour	13
4.1	Industry	14
4.2	Occupation.....	15
4.3	Unemployment.....	16
4.4	Transport	17
5	Education	18
5.1	Attainment.....	20
5.1.1	S4 Attainment	20
5.1.2	S5 Attainment	21
5.2	Leaver Destination	22
6	Health and Social care	23
6.1	Health	23
6.1.1	Maternity	26
6.2	Social Care	27
6.3	Hospital Emergency Admissions	28
7	Antisocial Behaviour	29
8	Access to Service	30
8.1	Drive time to (2012 data).....	30
8.2	Public transport to (2012 data)	30
9	Summary	31

Table 1 Age structure of Mosstodloch	4
Table 2 Marital Status	6
Table 3 Ethnicity	7
Table 4 Country of birth	8
Table 5 Religion	8
Table 6 Length of residence in the UK	9
Table 7 Household Composition	10
Table 8 Tenure and House Type	11
Table 9 Cars per household	12
Table 10 Economic Activity	13
Table 11 Employment by Industry	14
Table 12 Occupation	15
Table 13 Travel to Work	17
Table 14 Education Facts	18
Table 15 Travel to study	19
Table 16 Highest qualification	20
Table 17 S4 Attainment	20
Table 18 S5 Education Attainment.....	21
Table 19 Leaver Destination	22
Table 20 Self-assessed Health	23
Table 21 Disability	23
Table 22 Long Term health Conditions	24
Table 23 Health Condition Prevalence rates by GP Practice	25
Table 24 Teenage Pregnancies	26
Table 25 Provision of Unpaid Care	27
Table 26 Emergency Admissions	28
Table 27 Number of Antisocial Behaviour Complaints per 1000 population	29
Table 28 Crime Rates	29
Table 29 Drive Time	30
Table 30 Public Transport time to	30
Table 31 SIMD 2012 quintile ranking for the 10 data zones which cover the Mosstodloch area.....	31

Figure 1: Population profile of Mosstodloch and Moray at the 2001 and 2011 censuses..... 5

Figure 2: Percentage of Mosstodloch employees in each of the groupings at the 2001 and 2011 censuses..... 15

1 Population Structure

1.1 Age profile

Mosstodloch had a population of 1,022 in 2011¹, similar to the 1,017 residents recorded in 2001 and therefore significantly below the 7.3% population growth in Moray. The age profile of Mosstodloch shows that the median age, in 2011, for females was 46 and 43 for males, respectively three and two years more than the Moray average.

Table 1 Age structure of Mosstodloch ²

Age	Mosstodloch	Moray	Scotland
% 0 to 4 years old	4.3	5.6	5.5
% 5 to 15 years old	12.8	12.6	11.8
% 16 to 29 years old	14.3	16.1	18.5
% 30 to 44 years old	18.3	19.1	20.0
% 45 to 59 years old	20.4	21.3	21.1
% 60 to 74 years old	19.8	16.9	15.5
% 75 years old and over	10.2	8.4	7.7

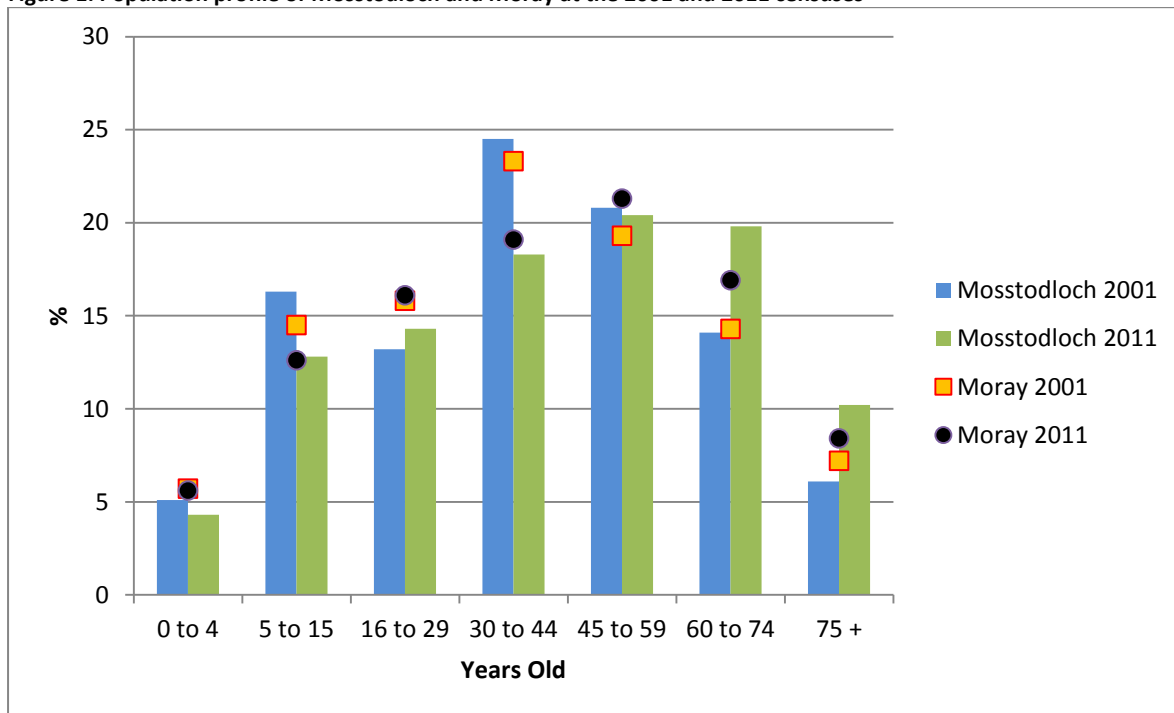
- Table 1 shows that, in 2011, 31% of Mosstodloch's population were below the age of 30, 3% lower than the Moray average. Between the two census dates (2001 & 2011) Mosstodloch has seen the proportion in this age group fall by 3.2%, almost double the 1.7% reduction recorded within this age category in Moray.
- Notably, there has been a 6.2% reduction in the percentage of 30 to 44 year olds residing in Mosstodloch in the same 10 year period.
- Mosstodloch has proportionately significantly more people above the age of 59 with just over 30% in comparison with 25% in Moray being within this age group. Mosstodloch, like Moray has seen increases within this age group between 2001 and 2011, albeit to a much greater extent 9.8% and 3.8% respectively.
- There are proportionately more females (51%) than males (49%) in Mosstodloch, mirroring the trend in Moray.

¹ 2011 census

² 2011 census

- Table 1 shows that proportionally three age groups within Mosstodloch exceed averages recorded in Moray and Scotland for Census 2011; groups aged between 5 and 15 years, 60 and 74 years and over 75 years. In all other age categories, results in Mosstodloch are below Moray and national averages. Some significant differences between 2001 and 2011 are captured in Figure 1 below.

Figure 1: Population profile of Mosstodloch and Moray at the 2001 and 2011 censuses



- The graph above shows that Mosstodloch is following the Moray trends for all age category groups shown with the exception of 45-59 year-olds where the trend is reversed. Also the graph shows that the proportion of older people (over 60 years) is increasing in Mosstodloch at a faster rate than the rest of Moray.
- In 2011 the 45-59 year age group represented the largest group in Mosstodloch, no change from 2001 when the same group had the highest number of people.
- The largest population group in Moray in 2001 were the 30-44, in 2011 however an increase was seen within the 45-59 years.

1.2 Marital Status

Table 2 Marital Status³

Marital status	Mosstodloch	Moray	Scotland
All people aged 16 and over	847	76,251	4,379,072
% Single (never married or never registered a same-sex civil partnership)	24.9	28.8	35.4
% Married or in a registered same-sex civil partnership	56.2	51.8	45.4
% Separated (but still legally married or still legally in a same-sex civil partnership)	2.5	3.1	3.2
% Divorced or formerly in a same-sex civil partnership which is now legally dissolved	9.6	8.5	8.2
% Widowed or surviving partner from a same-sex civil partnership	6.8	7.9	7.8

- A lower proportion of residents in Mosstodloch are single relative to Moray (24.9% versus 28.8%).
- The data from the 2001 and 2011 censuses show that the proportion of the population who are married is decreasing in Mosstodloch and Moray, albeit to a lesser extent (3% and 5% respectively). However proportionately this group remains the largest group in Mosstodloch (56.2%) exceeding Moray and Scottish averages (51.8% and 45.4%).

³ 2011 census

2 Identity

2.1 Ethnicity

Table 3 Ethnicity ⁴

Ethnicity	Mosstodloch	Moray	Scotland
All people	1,022	93,295	5,295,403
% White - Scottish	88.3	77.7	84
% White - Other British	10.0	18	7.9
% White - Irish	0.3	0.5	1
% White - Polish	1.2	1.1	1.2
% White - Other	0.3	1.7	2
% Asian, Asian Scottish or Asian British	0.0	0.6	2.7
% Other ethnic groups	0.0	0.5	1.3
Percentage of households where not all persons are in same ethnic group category	8.7	14.5	10.6

- Mosstodloch has a higher proportion of White-Scottish (88.3%) than both Moray (77.7%) and Scotland (84.0%). Only 2 other profiled areas in Moray exceed this proportion of White-Scottish ethnicity, Buckie and Keith.
- In comparison to Scotland, Mosstodloch has proportionately more White-Other British residents. The high proportion of “Other British” ethnicity in Moray is largely due to high proportion of personnel with this ethnicity at the RAF and Army bases in Moray. Also, there is some evidence to support the theory that there is some inward migration of people from other parts of the UK who are choosing Moray as a place to retire.
- Census 2011 reports no Asian or other ethnic groups residing in Mosstodloch.

⁴ 2011 census

2.2 Country of Birth

Table 4 Country of birth ⁵

Country of birth	Mosstodloch	Moray	Scotland
All people	1,022	93,295	5,295,403
% Scotland	85.4	75.4	83.3
% England	11.4	17.8	8.7
% Wales	0.3	0.9	0.3
% Northern Ireland	0.2	0.7	0.7
% Republic of Ireland	0.2	0.2	0.4
% Other EU countries (inc UK part not specified)	1.7	2.9	2.6
% Other countries	0.9	2.1	4

- There are commonalities between the Country of Birth and Ethnicity data with regards to Mosstodloch's population with similar trends displayed; the high percentage of people born in Scotland, significantly greater than Moray, correlates with the higher proportion of White – Scottish ethnicity.

2.3 Religion

Table 5 Religion ⁶

Religion	Mosstodloch	Moray	Scotland
All people	1,022	93,295	5,295,403
% Church of Scotland	38.7	34.0	32.4
% Roman Catholic	5.5	6.6	15.9
% Other Christian	5.3	9.4	5.5
% Muslim	0.0	0.3	1.4
% Other religions	0.2	0.9	1.1
% No religion	42.7	41.2	36.7
% Not stated	7.6	7.7	7.0

- Mosstodloch has a slightly higher proportion of people stating that they have no religious beliefs than Moray and proportionately 6% more than Scotland.
- The proportion of the Mosstodloch population who are Church of Scotland is higher than Moray and the national average. This may be reflective of the ethnicity and age profile of the population.

⁵ 2011 census

⁶ 2011 census

2.4 Length of residency for residents born overseas

Table 6 Length of residence in the UK ⁷

Length of residence in UK	Mosstodloch	Moray	Scotland
All people born outside the UK	27	4,883	369,284
% Resident in UK for less than 2 years	0.0	14.3	22.1
% Resident in UK for 2 years or more but less than 5 years	25.9	20.2	21.7
% Resident in UK for 5 years or more but less than 10 years	11.1	16.5	18.8
% Resident in UK for 10 years or more	63.0	49.0	37.4

- At the time of the 2011 census, almost 75% of Mosstodloch’s population who were born outside of the UK had resided in the UK for five years or more, significantly higher than both Moray (65.5%) and Scotland (56.2%). However in comparison to both Moray (5.2%) and Scotland (7%), Mosstodloch has a smaller proportion of residents who were born outside of the UK with only 2.6%. This may indicate that Mosstodloch has a relatively small inward migratory population from out with the UK in comparison to Moray and Scotland.

2.5 Language

- 99.1% of Mosstodloch residents aged 3 and over speak English well or very well which is amongst the highest level in the Moray localities. Moray and Scotland have 98.5% and 98.6% of their respective populations who speak English well or very well.
- 56.5% of the Mosstodloch residents, who are over three years old, are able to speak Scots⁸ compared to 45.3% for Moray and 30.1% nationally. In comparison, the highest percentages of Scots speakers in Moray are Keith (67%), Findochty (65.4%) and Buckie (62.6%). The Census does not ask about the Doric dialect which is commonly spoken in the North East of Scotland but anecdotal evidence is that the Doric dialect of Scots is by far the main dialect spoken in Moray. This suggests that a large proportion of the residents have family links to the area over several generations and perhaps reflects the significant proportion of White-Scottish residing in Mosstodloch.

⁷ 2011 census

⁸ Scots is the collective name for Scottish dialects

3 Housing

Household composition is important information to determine local services provided by the Council, its partners and the third sector.

Table 7 Household Composition⁹

Household Composition	Mosstodloch	Moray	Scotland
Total number of households (with residents)	448	40,062	2,372,777
% One person household - Aged 65 or over	14.1	13.7	13.1
% One person household - Aged under 65	14.3	16.4	21.6
% One family only: Lone parent: With dependent children	4.7	5.7	7.2
% One family only: Lone parent: All children non-dependent	4.0	3.5	3.9
% One family only: Married or same-sex civil partnership couple: With dependent children	14.7	15.9	13.6
% One family only: Married or same-sex civil partnership couple: No dependent children	23.7	21.7	18.4
% One family only: Cohabiting couple: With dependent children	4.9	4	3.7
% One family only: Cohabiting couple: No dependent children	2.9	5.5	5.5
% Other households: All full-time students	0.0	0	0.9
% Other households: All aged 65 and over	13.4	9.7	7.8
% Other households: Other	3.3	3.9	4.4

- With 1,022 people in 448 households, Mosstodloch properties have the same average occupancy rate (2.3 residents per household) as Moray and slightly above Scotland (2.2).
- Mosstodloch has a higher proportion of households (27.5%), where all residents are aged 65 and over, than Moray (23.4%) and Scotland (20.9%) reinforcing the population profile.

⁹ 2011 census

3.1 Tenure and House Type

Table 8 Tenure and House Type ¹⁰

Tenure	Mosstodloch	Moray	Scotland
Total number of households (with residents)	448	40,062	2,372,777
% Owned	74.3	65.9	62.0
% Rented from Council	18.8	14.1	13.2
% Other social rented	0.7	5.2	11.1
% Private rented	5.1	12.6	12.4
% Living rent free	1.1	2.1	1.3
House Type			
% House or bungalow	95.3	87.0	63.4
% Detached	37.3	37.2	21.9
% Semi - detached	36.4	31.4	22.8
% Terraced house (including end-terrace)	21.7	18.4	18.6
% Flat or maisonette or apartment	4.5	12.6	36.4
% Caravan or other mobile or temporary structure	0.2	0.4	0.2

- House ownership in Mosstodloch (74.3%) is significantly more than Moray (65.9%) and Scottish averages (62%).
- Conversely, rented properties (Social & Private) in Mosstodloch (5.8%) is significantly less than Moray (17.8%) and Scottish (23.5%) averages.
- In Mosstodloch, between the 2001 and 2011 censuses there has been no significant change in the total number of households (3.7% increase).
- House ownership increased by 2.5%. Over the same period there was a significant decrease (4.8%) in properties rented from the council and in contrast an increase (4.0%) in properties either socially or privately rented.
- Detached and semi-detached properties, in around an equal share, account for two thirds of dwelling types in Mosstodloch. Over the ten year period between censuses, there has been a 3.5% increase in the number of households living in detached properties but a 4.3% decrease in the number living in semi-detached properties.
- At the time of the 2011 census 4.5% of Mosstodloch households lived in Flats or maisonette apartments, a 1.3% decrease from the 2001 census and significantly below Moray (12.9%) and Scottish (35.6%) averages.

¹⁰ 2011 census

3.2 Transport¹¹

Table 9 Cars per household

Car or van availability	Mosstodloch	Moray	Scotland
Total number of households (with residents)	448	40,062	2,372,777
% No car or van	16.7	19.9	30.5
% 1 car or van	49.6	46.9	42.2
% 2 cars or vans	26.3	25.5	21.6
% 3 or more cars or vans	7.4	7.7	5.6

- The number of Mosstodloch households with no access to a car is below the Moray average; however those with access to one or two vehicles are both higher than Moray and Scottish averages.
- Between the 2001 and 2011 census, the proportion of households having no or one car has reduced whereas the proportion of households having two or three cars have increased the latter having doubled to 7.4%.
- Despite being on one of the main public transport routes in Moray, householders in Mosstodloch appear to be car owners with the proportion of households having no car being below the Moray average and the proportion with one, two and three or more cars being above or around Moray averages.
- Compared to Scotland the proportion of households across Moray with a vehicle available is much higher.

¹¹ 2011 census

4 Economy and Labour

Table 10 Economic Activity ¹²

Economic activity	Mosstodloch	Moray	Scotland
All persons 16 to 74	743	68,410	3,970,530
% Economically active	68.4	71.5	69
% Employees - part-time	13.5	15.7	13.3
% Employees - full-time	43.9	41.4	39.6
% Self-employed	6.2	8.4	7.5
% Unemployed	3.0	3.9	4.8
% Full-time student - employed	1.6	1.7	2.9
% Full-time student - unemployed	0.3	0.4	0.8
% Economically inactive	31.6	28.5	31
% Retired	19.9	16.3	14.9
% Student	3.0	3.4	5.5
% Looking after home or family	3.6	3.9	3.6
% Long-term sick or disabled	4.4	3.2	5.1
% Other	0.7	1.5	1.9

- 68.4% of people living in Mosstodloch are economically active, below Moray (71.5%) and Scottish (69%) averages. Of those that are economically active the majority (43.9%) are in full-time employment.
- The proportion of economically inactive in Mosstodloch, at 31.6% is above both Moray (28.5%) and Scottish (31%) averages. Notably, the proportion of retired people (19.9%) has increased by 3.9% in the 10 year period between censuses and is significantly above Moray (16.3%) and Scottish (14.9%) averages; this follows the age demographic in Mosstodloch.
- Noteworthy is the proportion of long-term sick or disabled people residing in Mosstodloch, at 4.4% this result is above the Moray average of 3.2%.

¹² 2011 census

4.1 Industry

Table 11 Employment by Industry ¹³

Industry	Mosstodloch	Moray	Scotland
All persons aged 16 to 74 in employment	484	45,983	2,516,895
% A. Agriculture, forestry and fishing	2.3	3.2	1.7
% B. Mining and quarrying	1.9	2.9	1.4
% C. Manufacturing	19.6	12.1	8.0
% D. Electricity, gas, steam and air conditioning supply	0.4	0.3	0.8
% E. Water supply; sewage, waste management and remediation activities	0.4	0.6	0.8
% F. Construction	10.3	9.1	8.0
% G. Wholesale and retail trade; repair of motor vehicles and motorcycles	15.9	14.8	15.0
% H. Transport and storage	5.0	4.2	5.0
% I. Accommodation and food service activities	6.4	6.0	6.3
% J. Information and communication	0.6	1.1	2.7
% K. Financial and insurance activities	1.4	1.2	4.5
% L. Real estate activities	2.3	1.1	1.2
% M. Professional scientific and technical activities	2.5	3.5	5.2
% N. Administrative and support service activities	3.9	3.2	4.3
% O. Public administration and defence; compulsory social security	8.7	11.9	7.0
% P. Education	6.0	7.9	8.4
% Q. Human health and social work activities	8.5	12.7	15.0
% R, S, T, U. Other	3.9	4.1	4.9

- There are a number of established local manufacturing businesses in and around Mosstodloch; therefore unsurprisingly the majority (19.6%) are employed in this sector, significantly above the proportion employed in the same sector in Moray (12.1%) and across Scotland (8%).
- However, the proportion employed in the manufacturing sector has reduced in Mosstodloch by 6.7% between Census 2001 and Census 2011.

¹³ 2011 census

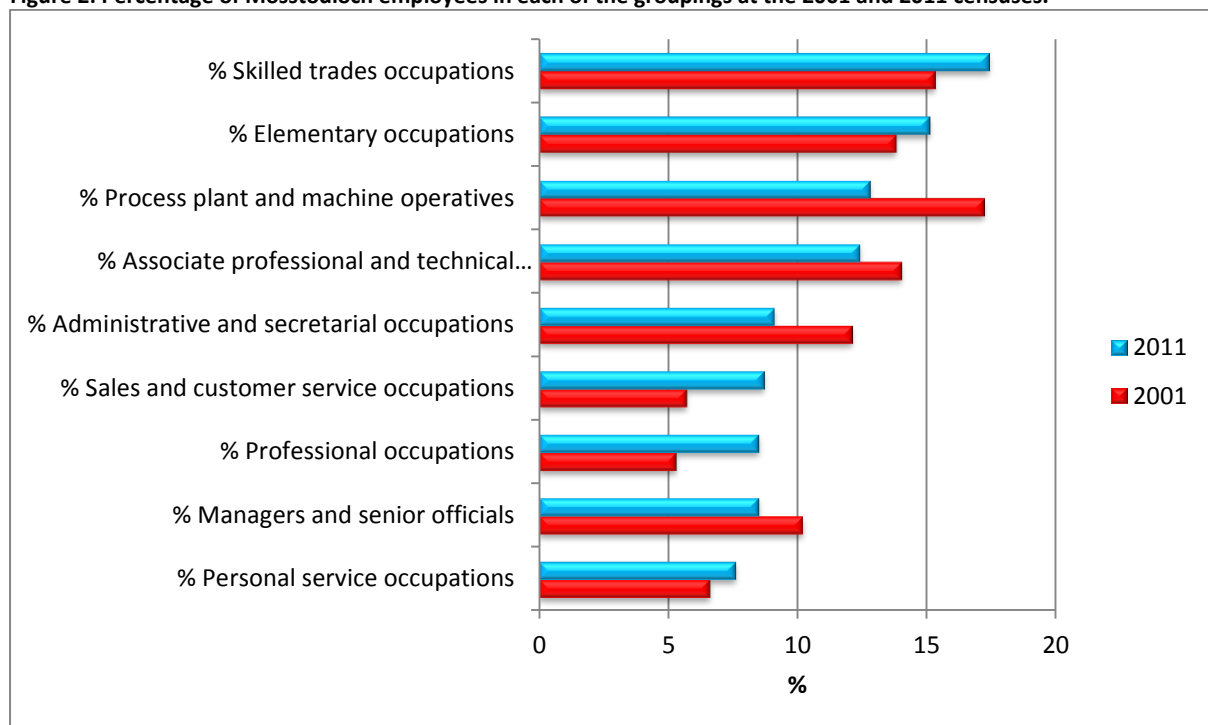
4.2 Occupation

Table 12 Occupation ¹⁴

Occupation	Mosstodloch	Moray	Scotland
All persons 16 to 74 in employment	484	45,983	2,516,895
% Managers, directors and senior officials	8.5	7.6	8.4
% Professional occupations	8.5	11.4	16.8
% Associate professional and technical occupations	12.4	14.7	12.6
% Administrative and secretarial occupations	9.1	8.4	11.4
% Skilled trades occupations	17.4	16.6	12.5
% Caring, leisure and other service occupations	7.6	10	9.7
% Sales and customer service occupations	8.7	8.1	9.3
% Process, plant and machine operatives	12.8	10.4	7.7
% Elementary occupations	15.1	12.8	11.6

- The proportion of Mosstodloch employees within the process, plant and machine operative and elementary occupations are both above Moray and Scotland, supporting the point made in item 4.1 of Mosstodloch’s high proportion of employees working in the manufacturing sector. Although, similarly to the manufacturing sector the proportion employed within the process, plant and machine operative occupations fell by 4.4% between the censuses of 2001 and 2011.

Figure 2: Percentage of Mosstodloch employees in each of the groupings at the 2001 and 2011 censuses.



¹⁴ 2011 census

-
- The graph above also shows that, in the ten years between censuses, there were more notable increases in professional, sales and customer service and skilled trades occupations and more notable decreases in process, plant and machine operatives and administrative and secretarial occupations.

4.3 Unemployment

- At the time of the 2011 census unemployment in Mosstodloch (3%) was below Moray (3.9%) and Scotland (4.8%) averages. The increase in unemployment (0.4%) between the two census dates is equal to the Moray average.
- Of the unemployed population in Mosstodloch, a large proportion (72.7%) was recently unemployed, last working in the period 2010/2011, whereas Moray averages showed a greater proportion unemployed for a longer period.

4.4 Transport

Table 13 Travel to Work ¹⁵

Travel to work	Mosstodloch	Moray	Scotland
All persons aged 16 to 74 who were in employment (excluding full-time students)	472	44,816	2,400,925
% Car (including passengers car pools and taxis)	69.1	63.7	62.4
% Train	0.6	2.2	3.7
% Bus	5.3	3.4	10
% On foot	10.0	12.2	9.9
% Other	5.7	6.3	3.1
% Works mainly at or from home	9.3	12.1	10.8

- Proportionately Mosstodloch had slightly more (69.1%) people travelling by car to work compared with Moray (63.7%) and the rest of Scotland (62.4%) which correlates with car ownership in Mosstodloch where the percentage owning 1 or 2 cars is above Moray and Scotland.
- Given the number of manufacturing businesses in close proximity to Mosstodloch, around only 50 people (10%) walk to work, below the Moray average of 12.2%. This is perhaps influenced by shift work requirements.
- With Mosstodloch being on a main bus route, unsurprisingly the proportion travelling to work by bus (5.3%) is above the Moray average (3.4%).
- The proportion working from home increased by 5.7% from 3.6% in 2001 to 9.3% in 2011. This equates to an increase of 14 people working from home between 2001 and 2011. During the same period in Moray working from home increased to 12.1% from 6.8%.

¹⁵ 2011 census

5 Education

Table 14 Education Facts ¹⁶

Interesting facts	Mosstodloch	Moray	Scotland
Percentage 16 to 17 year olds in education	57.6	76.6	79.8
Percentage of households where no person aged 16 to 64 has a highest level of qualification of Level 2 or above, or no person aged 16-18 is a full-time student	52.5	49.0	47.2

- Mosstodloch has a significantly lower proportion (57.6%) of 16-17 year olds in full time education than the rest of Moray (76.6%) and Scotland (79.8%), indicating that pupils are leaving school early to either enter or seek employment.
- Mosstodloch had a slightly higher proportion of households to Moray where no one holds a national level qualification above level 2 (SCE Higher or similar) or no person aged 16-18 is a full-time student. This proportion of 52.5% is also higher than the Scottish figure of 47.2%.

¹⁶ 2011 census

Table 15 Travel to study ¹⁷

Travel to study	Mosstodloch	Moray	Scotland
All people aged 4 and over studying	167	15,771	996,282
% Car (including passengers car pools and taxis)	23.4	23.2	22.3
% Train	2.4	1.0	2.9
% Bus	19.2	20.3	21.5
% On foot	39.5	41.5	39.1
% Other	10.8	2.0	1.7
% Studies mainly at or from home	4.8	12.0	12.4

- In Mosstodloch a slightly higher proportion (23.4%) of pupils/students travel to study by car than either Moray (23.2%) or Scotland (22.3%), an increase to the proportion of those who travelled to school by car in 2001 (19.3%).
- The proportion of students walking to their place of study (39.5%) is slightly less than Moray (41.5%) and Scottish (39.1%) figures. Mosstodloch has a primary school within the village and a secondary school within approximately 2 miles.
- The 2011 census includes travel to study by ‘other’ methods, this may include cycling. Worth noting is that 10.8% of students use ‘other’ methods to get to their place of study, significantly above the Moray (2%) and Scottish (1.7%) averages.
- The percentage of pupils / students studying at home (4.8%), although increasing is significantly less than the percentage in Moray (12%) and Scotland (12.1%).

¹⁷ 2011 census

Table 16 Highest qualification ¹⁸

Highest qualification ¹⁹	Mosstodloch	Moray	Scotland
All persons aged 16 and over	847	76,251	4,379,072
% With no qualifications	27.4	26.7	26.8
% Highest qualification attained - Level 1	28.9	26.3	23.1
% Highest qualification attained - Level 2	15.6	14.4	14.3
% Highest qualification attained - Level 3	10.0	9.9	9.7
% Highest qualification attained - Level 4 and above	18.1	22.7	26.1

- There are a slightly higher proportion of people over 16 with no qualifications (27.4%) in Mosstodloch than there is in both Moray (26.7%) and Scotland (26.8%).
- People in Mosstodloch exceed both Moray and Scotland's figures in all qualification categories up until those who have achieved a Level 4 qualification (degree equivalent or above) when the result (18.1%) falls behind Moray (22.7%) and Scotland (26.1%).

5.1 Attainment

5.1.1 S4 Attainment

Table 17 S4 Attainment ²⁰

Name	Mosstodloch	Moray	Scotland
Total S4 Students from 2008/9 to 2012/13 ²¹	32	5,499	280,909
S4: No pupils with 5 awards at SCQF level 5 and above	10	2,161	103,795
Percentage of pupils with 5 awards at SCQF level 5 and above	31.3%	39.3%	36.9%
Average S4 Tariff	178.7	198	185

¹⁸ Census 2011 <http://www.scotlandscensus.gov.uk/variables-classification/highest-level-qualification>

¹⁹ The following table shows what the levels used in the census mean.

Level 1	Standard Grade (equivalent or above)	Level 2	Higher (equivalent or above)
Level 3	HNC (equivalent or above)	Level 4	Degree (equivalent or above)

²⁰ Source – Scottish Neighbourhood Statistics - <http://www.sns.gov.uk>

²¹ The sample is taken over five years to comply with the other monographs of other areas/localities of Moray. Nearly all of those other areas did not have sufficient numbers in a single year to make a comparison with the larger data sets of Moray and Scotland.

- Over the five years between 2008/9 and 2012/13, 31.3% of pupils living in the Mosstodloch area attained five awards at SCQF level 5 and above. This performance is below Moray (39.3%) and Scottish averages (36.9%).
- During the same period the average tariff score achieved was 178.7 which was significantly worse than Moray (198) and also lower than Scotland (185).

5.1.2 S5 Attainment

Table 18 S5 Education Attainment²²

	Mosstodloch	Moray	Scotland
Total Students for S5	22	4,380	235,893
S5: No pupils with 1 award at SCQF level 6 and above : 2008/9 - 2012/13	14	2,521	128,253
S5: Percentage of pupils with 1 award at SCQF level 6 and above : 2008/9 - 2012/13	63.6%	57.6%	54.4%
S5: No pupils with 3 award at SCQF level 6 and above : 2008/9 - 2012/13	8	1,399	74,789
S5: Percentage of pupils with 3 award at SCQF level 6 and above : 2008/9 - 2012/13	36.4%	31.9%	31.7%
S5: No pupils with 5 award at SCQF level 6 and above : 2008/9 - 2012/13	1	595	34667
S5: Percentage of pupils with 5 award at SCQF level 6 and above : 2008/9 - 2012/13	4.6%	13.6%	14.7%
5 year Tariff average	356.4	365	347

- Over the five year period between 2008/9 and 2012/13 the proportion of pupils in S5 attaining at least one award at SCQF level 6 in the Mosstodloch area (63.6%) was above the rest of Moray (57.6%) and Scottish average (54.4%).
- Similar trends are witnessed for S5 pupils achieving 3 awards at SCQF level 6 and above where a rate (36.4%) was achieved, above that of Moray (31.9%) and Scotland (31.7%).
- In the highest achieving category for S5 pupils, 4.6% of Mosstodloch pupils achieved 5 awards at Level 6, significantly below Moray (13.6%) and Scottish (14.7%) averages. During the same period the tariff score attained by Mosstodloch pupils in S5 (356.4), was just lower than the Moray average (365) but exceeded the Scottish (347) average.

²² The sample is taken over five years to comply with the other monographs of other areas/localities of Moray. Nearly all of those other areas did not have sufficient numbers in a single year to make a comparison with the larger data sets of Moray and Scotland.

5.2 Leaver Destination

Table 19 Leaver Destination ²³

	Mosstodloch	Moray	Scotland
Total leavers	38	5,237	265,363
Higher Education	29%	33.3%	36.0%
Further Education	23.7%	27.2%	27.1%
Training ²⁴	2.6%	1.5%	5.7%
Employment	29%	28.7%	19.7%
Total Positive	84.2%	90.7%	88.4%
Unemployment and seeking employment or training	13.2%	7.4%	9.6%
Unemployed not seeking employment or training	2.6%	1.7%	1.3%
Total Negative Destination	15.8%	9.1%	10.9%
Unknown	0%	0.2%	0.6%

- School leavers' destination data in the five years between 2008/9 and 2012/13, shows that a lower proportion went to positive destinations (84.2%) than either Moray (90.7%) or Scotland (88.4%).
- As proportionately fewer secondary school pupils achieve in the highest attaining category as detailed in table 19 it is reasonable to predict that the proportion entering Higher Education (29%) is below Moray (33.3%) and Scottish (36%) averages.
- Despite attainment in the 1 and 3 awards at Level 6 being above Moray and Scottish averages, the percentage of secondary school pupils progressing to Further Education (23.7%) is below comparators; Moray (27.2%) and Scotland (27.1%).
- Proportionately more pupils (13.2%) became unemployed upon leaving school than in Moray as a whole (7.4%) and Scotland (9.6%).

²³Data for the 5 year period from 2008/09-2012/13, Source – Scottish Neighbourhood Statistics - <http://www.sns.gov.uk>

²⁴ The "Training" destination shown in the table above refers to destinations where there is no employer or no formal education establishment (For example a government training scheme). As these opportunities occur less frequently away from the large centres of population the uptake in Moray is small.

6 Health and Social care

6.1 Health

Table 20 Self-assessed Health ²⁵

	Mosstodloch	Moray	Scotland
All people	1,022	93,295	5,295,403
% Very good	45.3	53.7	52.5
% Good	34.5	31.3	29.7
% Fair	15.4	11.1	12.2
% Bad	3.5	2.9	4.3
% Very bad	1.3	0.9	1.3

- 79.8% of Mosstodloch residents described themselves as having very good or good health which is lower than both Moray (85%) and the national average (82.2%).
- Mosstodloch residents describing themselves as having bad or very bad health (4.8%) are proportionately slightly higher than Moray (3.8%) but lower than Scotland (5.6%).

Table 21 Disability ²⁶

Long-term health problem or disability	Mosstodloch	Moray	Scotland
All people	1,022	93,295	5,295,403
% Limited a lot	9.7	7.6	9.6
% Limited a little	13.1	10.2	10.1
% Not limited	77.2	82.3	80.4

- As shown in table 21 above the long-term health or disability profile for Mosstodloch is proportionately slightly higher than Moray. With proportionately older people in Mosstodloch than in Moray and Scotland, this may be a contributory factor.
- The proportion of the population with long-term health problem or disability who consider themselves not limited by a long-term health or disability is proportionately less (77.2%) than Moray (82.3%) and Scottish (80.4%) averages.

²⁵ 2011 census

²⁶ 2011 census

Table 22 Long Term health Conditions ²⁷

Long-term health condition	Mosstodloch	Moray	Scotland
All people	1,022	93,295	5,295,403
% With no condition	63.6	70.9	70.1
% With one or more long-term health conditions	36.4	29.1	29.9
% With deafness or partial hearing loss	7.5	7.0	6.6
% With blindness or partial sight loss	2.3	2.5	2.4
% With learning disability (for example, Down's Syndrome)	0.3	0.5	0.5
% With learning difficulty (for example, dyslexia)	3.2	2.0	2.0
% With developmental disorder (for example, Autistic Spectrum Disorder, Asperger's Syndrome)	0.9	0.6	0.6
% With physical disability	7.8	5.8	6.7
% With mental health condition	3.8	3.2	4.4
% With other condition	23.3	18.2	18.7

- The proportion of Mosstodloch's population (63.6%) who have no long-term health condition is lower than both Moray (70.9%) and Scottish (70.1%) averages.
- In Mosstodloch the most common condition was physical disability (7.8%), followed by deafness or partial hearing loss (7.5%) and mental health condition (3.8%).

²⁷ 2011 census

Table 23 Health Condition Prevalence rates by GP Practice ²⁸

Health Condition Prevalence Rates (per 100 patients)	Mosstodloch	Moray	Scotland
1. "Smoking" (conditions assessed for smoking)	32.3	25.52	24.74
2. Hypertension	20.6	14.84	13.94
3. Obesity	14.1	10.53	8.05
4. Asthma	7.7	5.94	6.10
5. Hypothyroidism	6.8	5.49	4.79

The table above shows the 5 most common health conditions recorded at the Fochabers Medical Practice during March 2013 to April 2014 through the NHS Quality & Outcomes framework data collection. As Mosstodloch does not have a GP dedicated practice in the village, data has been taken from the nearby Fochabers Medical Practice which includes residents of Mosstodloch and the surrounding area, with a GP patient roll of 4,047 (January 2013). For comparison the Moray and Scotland rates have been included:

- The top three health conditions reported through GP Practices are the same for Fochabers, Moray and nationally (smoking conditions, hypertension and obesity).
- Data from the Fochabers practice shows markedly higher rates (per 100 patients) for the top three conditions when compared to Scotland – Smoking cessation (+7.6), Hypertension (+6.7) and Obesity (+6).
- The Fochabers practice actually has a higher rate than nationally and against Moray for each of the top ten health conditions as listed in the table above.
- Fochabers practice patients have lower rates of kidney disease, depression, learning disabilities, osteoporosis and palliative care than both Moray and Scotland.

²⁸Elgin is served by three GP Practices (Elgin Community, Linkwood, and Maryhill). The data shown is the weighted average of all three practices using the list sizes of each practice. The source data is from <http://www.isdscotland.org/Health-Topics/General-Practice/Quality-And-Outcomes-Framework/2013-14/Register-and-prevalence-data.asp>

Of the 24 health conditions recorded at GP Practices through the NHS Quality & Outcomes Framework the Fochabers Medical Practice prevalence rate was higher than the national average for 17 of the conditions. In summary as with the national picture Smoking conditions, Hypertension and Obesity are the top three most common health conditions at the Fochabers practice, however the rates are markedly higher at Fochabers when compared to the national average.

6.1.1 Maternity

Table 24 Teenage Pregnancies ²⁹

Teenage Pregnancies (Rate per 1000 women)	Moray	Scotland
Teenage pregnancies aged under 16 ³⁰ : 2012-2014	3.0	4.9
Teenage pregnancies aged under 18 ³¹ : 2012-2014	21.2	24.9
Teenage pregnancies aged under 20 ³² 2014	32.9	34.1

- There are relatively fewer teenage pregnancies in Moray than for the rest of Scotland. Rates are reducing in Moray and across Scotland. The three year aggregate data for 2003-2005 for the under 16's indicated that there were 32 teenage pregnancies in Moray, however by 2012-2014 the number recorded had reduced to 15, more than halving the rate. Whilst the Scotland rate has also reduced over the same period it has not done so to the same extent.
- Under 20s rates in Moray are closer to Scotland rates than the other two categories and in this category the Scotland rate has reduced more than Moray's has. In 2005 there were 120 teenage pregnancies in Moray for under 20s; by 2014 the figure had reduced to 91.
- Smoking during pregnancy: Accumulated figures between 2011 and 2013 show that the percentage of pregnant women who smoke at booking is slightly higher in Moray (20.8%) than it is in Scotland (19.1%) but is trending downwards. Mosstodloch is placed below both with 18% of women smoking at the time of booking.

²⁹ Source – Scottish Neighbourhood Statistics - <http://www.sns.gov.uk>

³⁰ Rate calculated using 3yr aggregate data, 2012-14, 13-15 age group

³¹ Rate calculated using 3yr aggregate data, 2012-14, 15-17 age group

³² Rate calculated using 1Yr data, 15-19 age group

6.2 Social Care

Table 25 Provision of Unpaid Care ³³

Provision of unpaid care	Mosstodloch	Moray	Scotland
All people	1,022	93,295	5,295,403
% Not providing care	89.4	91.6	90.7
% Providing 1 to 19 hours of care a week	5.1	4.8	5.2
% Providing 20 to 34 hours of care a week	1.2	0.7	0.9
% Providing 35 to 49 hours of care a week	0.5	0.6	0.8
% Providing 50 or more hours of care a week	3.8	2.2	2.5

- 108 (10.6%) of Mosstodloch residents provide care to either a friend or family member.
- Notably, around 39 (3.8%) people provide 50 or more hours of care per week, significantly above the proportion for Moray (2.2%) and Scotland (2.5%). Earlier in the document we noted the aged profile and long term health conditions of those living in Mosstodloch, both perhaps factors in care requirements.
- In Mosstodloch the proportion of females providing care (51.9%) is not as high as the proportion in Moray (59.9%).
- Just under half of people providing care in Mosstodloch (47.2%) also work.
- At the time of the 2011 census, a third of carers were aged above the age of 65, substantially above Moray (21.2%) and Scotland (19.3%).

³³ 2011 census

6.3 Hospital Emergency Admissions

Table 26 Emergency Admissions³⁴

	Mosstodloch	Moray	Scotland
Emergency admissions - both sexes - all ages - rate/100,000 : 2012	5,431	7,476	10,194
Emergency admissions - both sexes - aged 65 and over - rate/100,000 : 2012	15,126	16,945	25,493

- Emergency Admissions for all ages from Mosstodloch are lower than the rest of Moray and are well below the national average.
- Emergency admissions for the over 65s are below the Moray average and well below the national average.

³⁴ 2011 census

7 Antisocial Behaviour

Table 27 Number of Antisocial Behaviour Complaints per 1000 population ³⁵

Type of Complaint	Mosstodloch	Moray
Noise	2.9	12.2
Rowdy Behaviour	0.0	4.0
Neighbour Dispute	2.4	3.9
Graffiti	0.0	0.3
Vandalism	1.5	8.1
Litter	0.5	1.7
Fly Tipping	0.0	3.5
Dog Fouling	1.0	1.3

- In Mosstodloch, the number of antisocial behaviour complaints fell by 46%, from 11 to 6 in the year to 2013/14.

Table 28 Crime Rates ³⁶

Number of Crimes per 1,000 residents per year		
Year	Mosstodloch	Moray
2012/13	21.5	67.5
2013/14	26.4	69.4

- Crime rates in Mosstodloch are significantly lower than the Moray average.
- The number of crimes in Mosstodloch and Moray have increased slightly between 2012/13 and 2013/14.

³⁵ Average number of complaints per year over the two years 2012/13 and 2013/14 – from police records

³⁶ From police records of reported crimes

8 Access to Service

8.1 Drive time to (2012 data)

Table 29 Drive Time ³⁷

Name	GP	Post Office	Petrol Station	Primary School	Secondary School	Shopping Facilities
Mosstodloch	5.6	4.7	1.6	2.3	4.6	13.4

- The drive time shown is an average drive time against each category. The table shows that the majority of essential services are within a five minute drive with the exception of a retail centre, which is within a 13 minute drive.

8.2 Public transport to (2012 data)

Table 30 Public Transport time to ³⁸

Datazone	GP	Post Office	Shopping Facilities
Mosstodloch	12.5	8.6	27.6

- The above table provides estimated journey times (minutes) by public transport to essential services for those residing in Mosstodloch.

³⁷ Source – Scottish Neighbourhood Statistics - <http://www.sns.gov.uk>

³⁸ Source – Scottish Neighbourhood Statistics - <http://www.sns.gov.uk>

9 Summary

Table 31 SIMD 2012 quintile ranking³⁹ for the 10 data zones which cover the Mosstodloch area.

Name	Income	Housing	Health	Employment	Education/ Skills/Training	Crime	Access to Services	Overall
Overall Average Ranking	4	4	3	3	2	5	2	3

1. The population of Mosstodloch is relatively static with little change in the 10 years to 2011. Almost a third of Mosstodloch's population are aged over 60 years of age, a higher proportion in comparison with the rest of Moray and increasing at a greater rate. With the 45-59 year age group currently representing the largest group in Mosstodloch in 2011, there is potential for the proportion of older residents to further increase in the next 10 year census period. Conversely, the population aged between 30 and 44 years and less than 30 years has fallen between census periods.
2. Mosstodloch has one of the highest proportions of White-Scottish residents in Moray.
3. 74% of homes in Mosstodloch are owner occupied, significantly more than Moray and Scottish averages. Conversely, rented properties in Mosstodloch are well below rates in Moray and Scotland. Detached and semi-detached properties account for two thirds of dwelling types in Mosstodloch.
4. 68.4% of the Mosstodloch 16-74 population are economically active, just below Moray and Scottish averages with 43.9% of these people employed on a full-time basis, above comparator averages.
5. Unemployment in Mosstodloch is above comparator averages. Most notably, the proportion of retired people, featured within the category having increased by 3.9% in the 10 year period between censuses remains above Moray and Scottish averages.
6. Of the 484 people aged 16 to 74 in employment, 19.6% are employed in manufacturing, well above the proportion employed within this sector in Moray (12.1%) and Scotland (8%), albeit employment in this sector has reduced by 6.7% between Census 2001 and Census 2011.
7. Skilled trades, elementary occupations and process, plant and machine operatives account for 45.3% of occupations in Mosstodloch. These three occupations account for 39.8% of those in employment in Moray.
8. With significantly fewer 16-17 year olds in full time education than the rest of Moray and Scotland, pupils' preference may be to leave school early to either enter or seek employment.

³⁹ The Scottish Index of Multiple Deprivation (SIMD) divides Scotland into 6,505 small areas, called data zones, each containing around 350 households. An average ranking is calculated by using a population weighted average of SIMD scores of all 29 data zones. The SIMD score for each data zone is between 1 and 6,505. In quintiles, the rankings are 1 (most deprived) to 5 (least deprived)

-
9. Of the 847 people in Mosstodloch aged 16 and over, 54.5% have attained one or more qualifications at standard grade, Higher or HNC, with all categories slightly above Moray averages. 27.4% have no qualifications, slightly above the Moray average and 18.1% achieved a degree equivalent qualification, below the Moray and Scottish averages.
 10. Focusing on school pupil attainment, tariff scores for S4 and S5 pupils both fell below the Moray average but were above Scottish averages.
 11. In the five years to 2012/13, a lower proportion of school leavers in Mosstodloch went to positive destinations than proportions in Moray and Scotland and proportionately fewer secondary school pupils entered Higher Education or Further Education than comparators. In the same 5 year period, pupils from Mosstodloch progressing to a negative leaver destination (unemployed seeking and not seeking employment or training) were considerably higher than Moray and Scottish averages.
 12. 4.4% of the population aged 16-74 have long-term health issues or have a disability, against a Moray average of 3.2%. With no dedicated GP practice in the village, data taken from the nearby Fochabers Medical Practice shows that the top three health conditions are smoking conditions, hypertension and obesity, in line with Moray and Scottish trends, albeit at markedly higher rates.
 13. The Scottish Index of Multiple Deprivation (SIMD) data for Mosstodloch shows that as a whole the area is placed in the least deprived 60% in Moray. With no categories featuring in the 20% most deprived, the strongest domain scores displayed in Mosstodloch is crime. The weakest domain scores are within Education / Skills / Training and Access to Services.
 14. In summary, the majority of residents in Mosstodloch are “White-Scottish”, own their house, are older than Moray and Scottish averages, work full-time or are retired. Reasonably qualified, mainly employed in skilled trades, elementary occupations and process, plant and machine operations, they own at least one car and mainly travel by car to work. The children are generally inclined to leave school and seek employment; however with the proportion progressing to a negative destination above Moray and Scottish averages, this option appears not always successful. Attainment in terms of tariff scores is below Moray averages. A greater proportion of residents consider themselves to be in poor health or have long term health issues or disability than in Moray. Residents share the same health conditions as the rest of Moray and Scotland, albeit at markedly higher rates. The area has a low incidence of anti-social behaviour and crime.

Performance Management Officer

Corporate Policy Unit

Moray Council

Tel: 01343 543451



**Moray
Community Planning
Partnership**