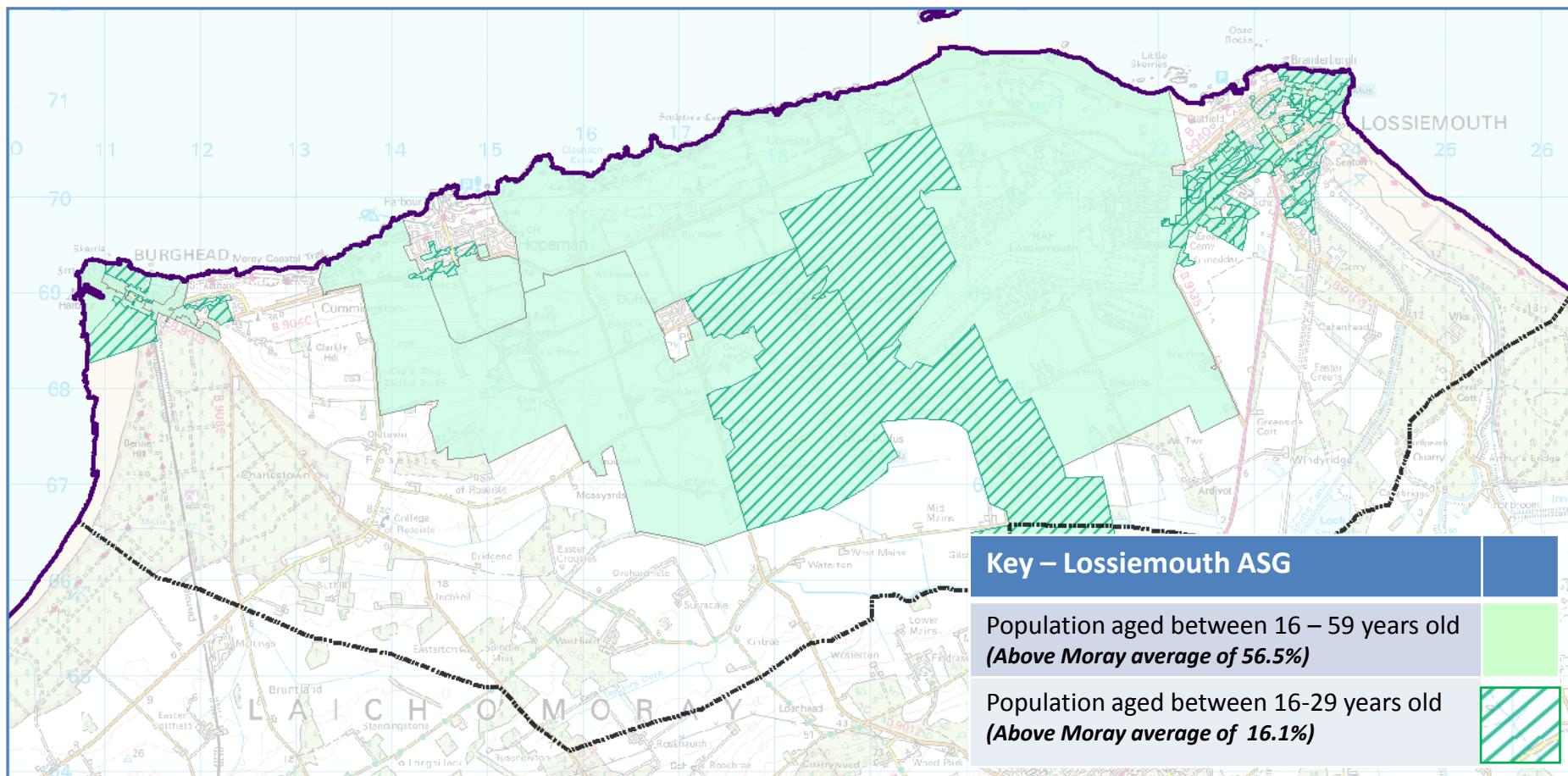


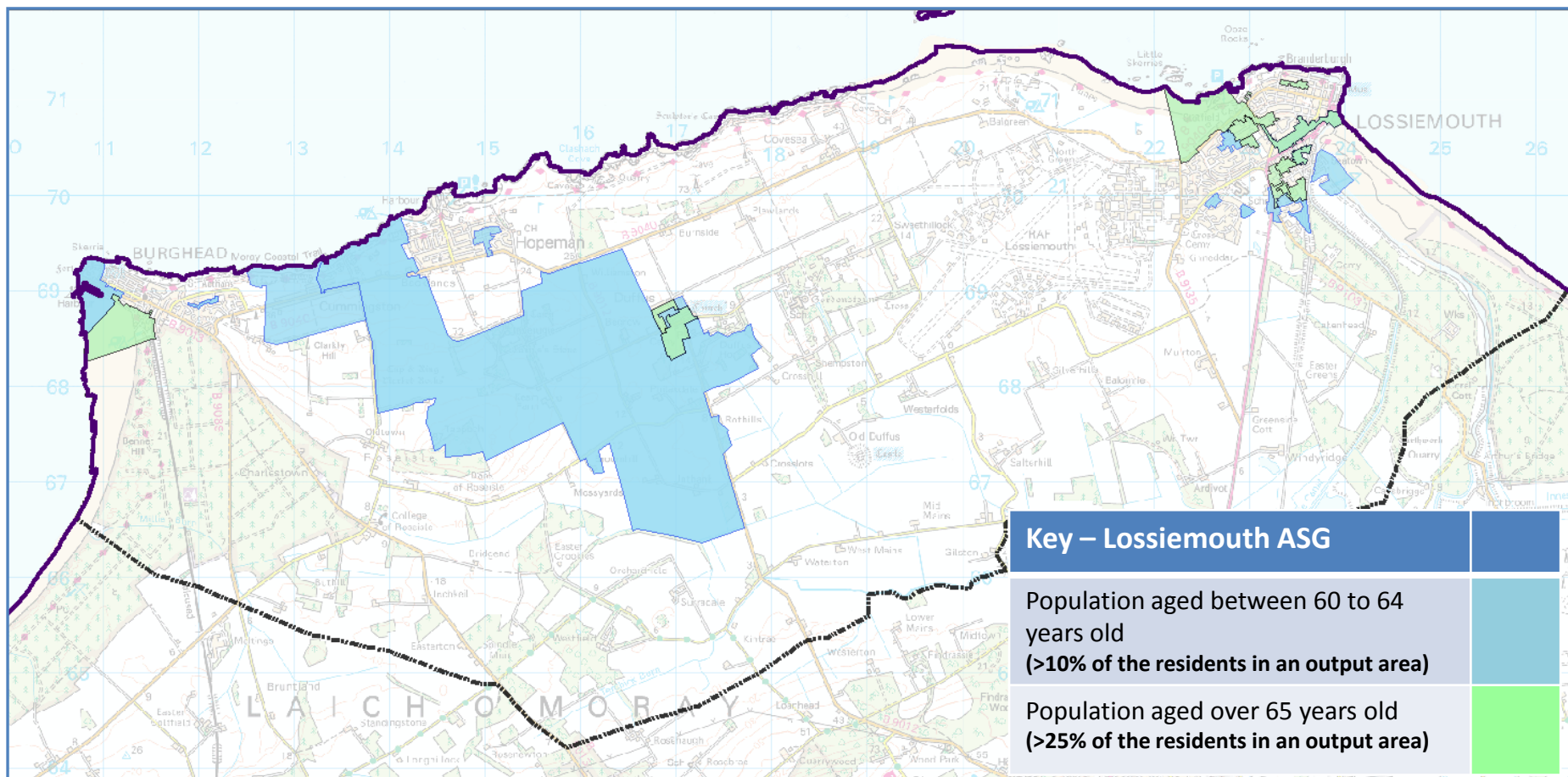
Lossiemouth ASG

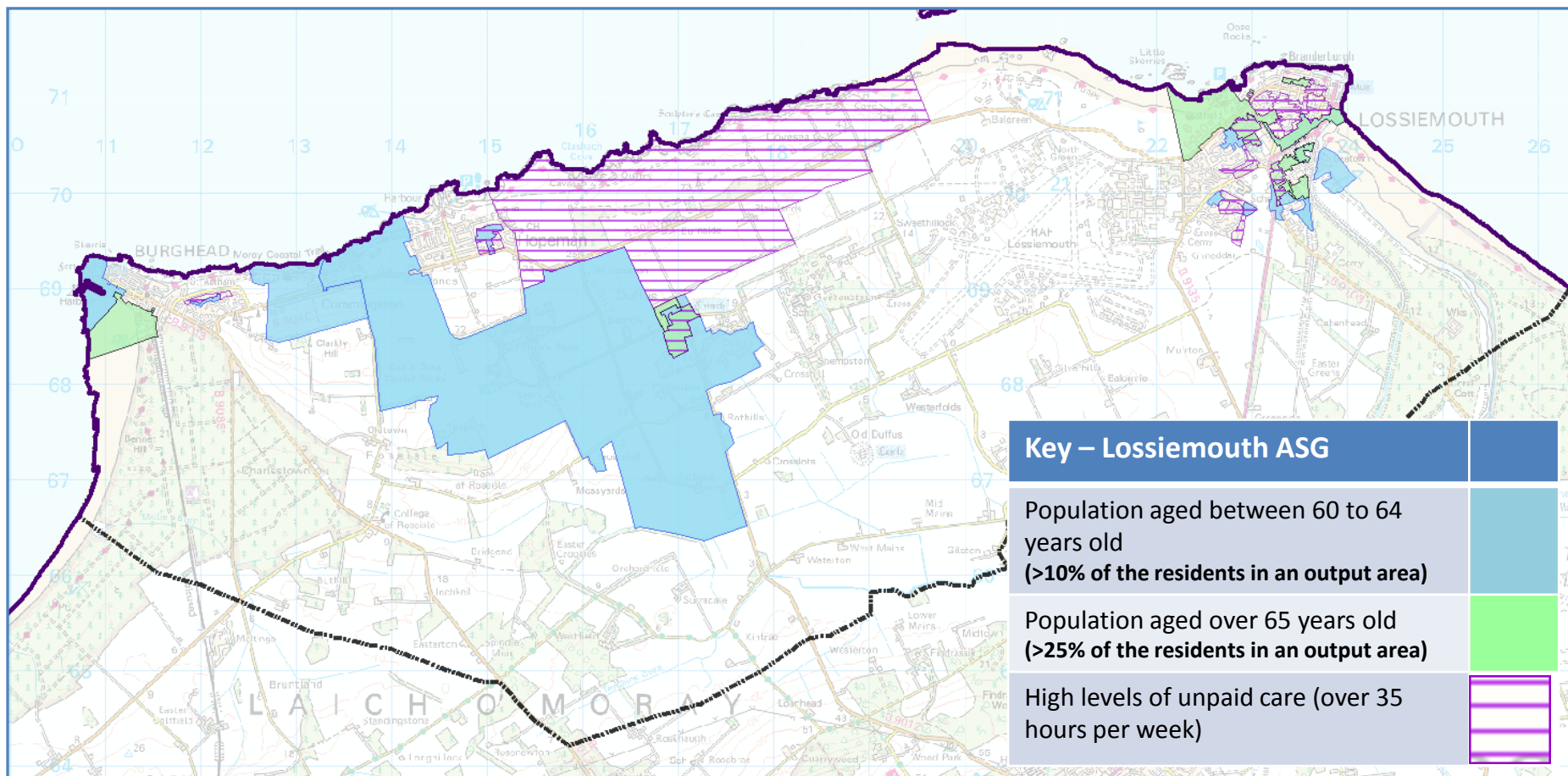
Maps for Summary

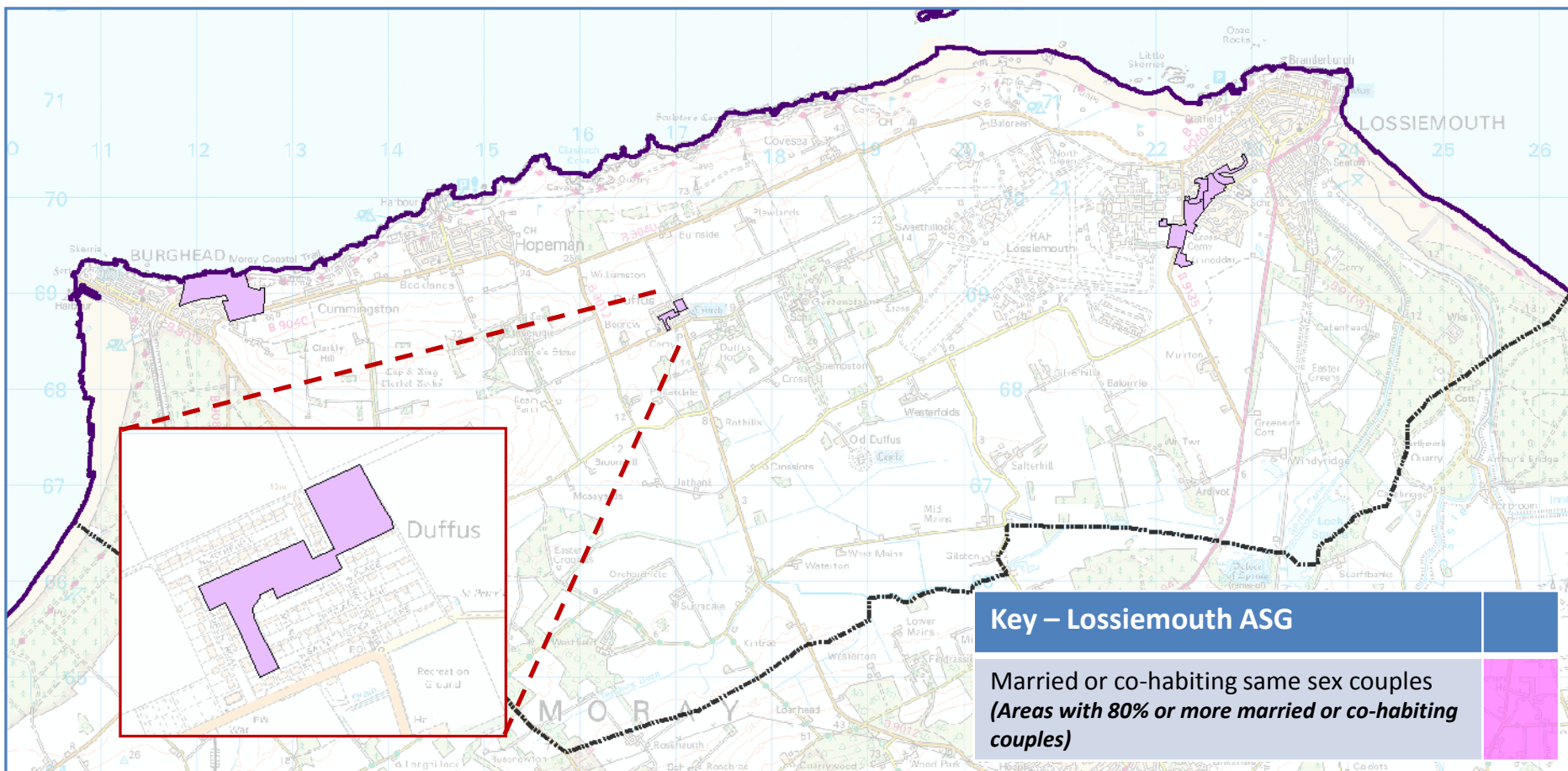
LOSSIEMOUTH – POPULATION AGE



The population demographic of the town of Lossiemouth reflects the fact that it is home to a Royal Air Force base: there is a significantly higher percentage of working age people here (age 16 – 59) than the Moray average, particularly in the 16 – 29 age group.

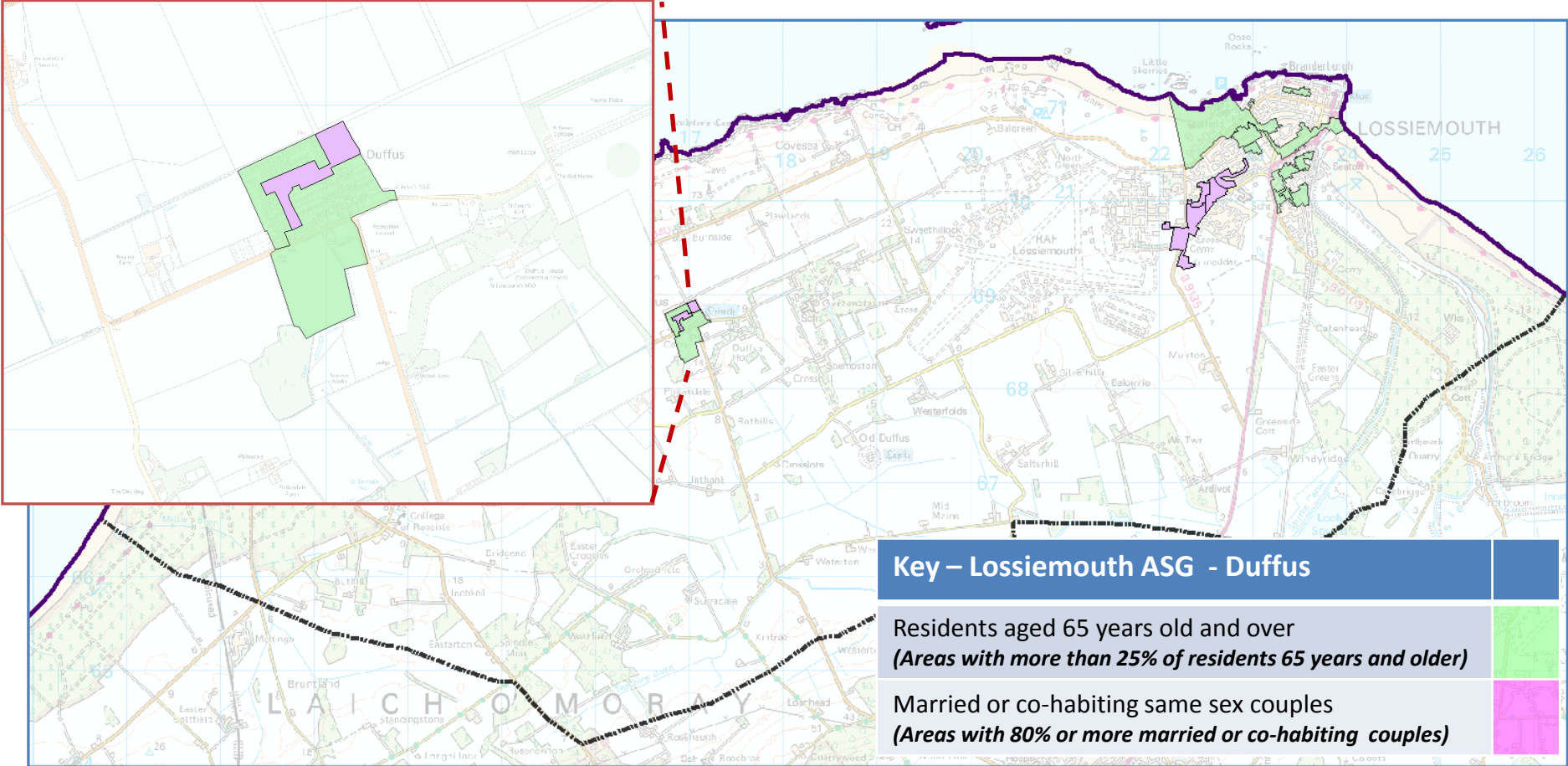






Duffus has a significantly higher percentage of married/co-habiting households than the Moray average which may suggest an availability of unpaid care if needed. However, it would also indicate that the carers themselves would be older.

**DUFFUS – HEALTHY, MARRIED/CO-
HABITING OLDER COUPLES**

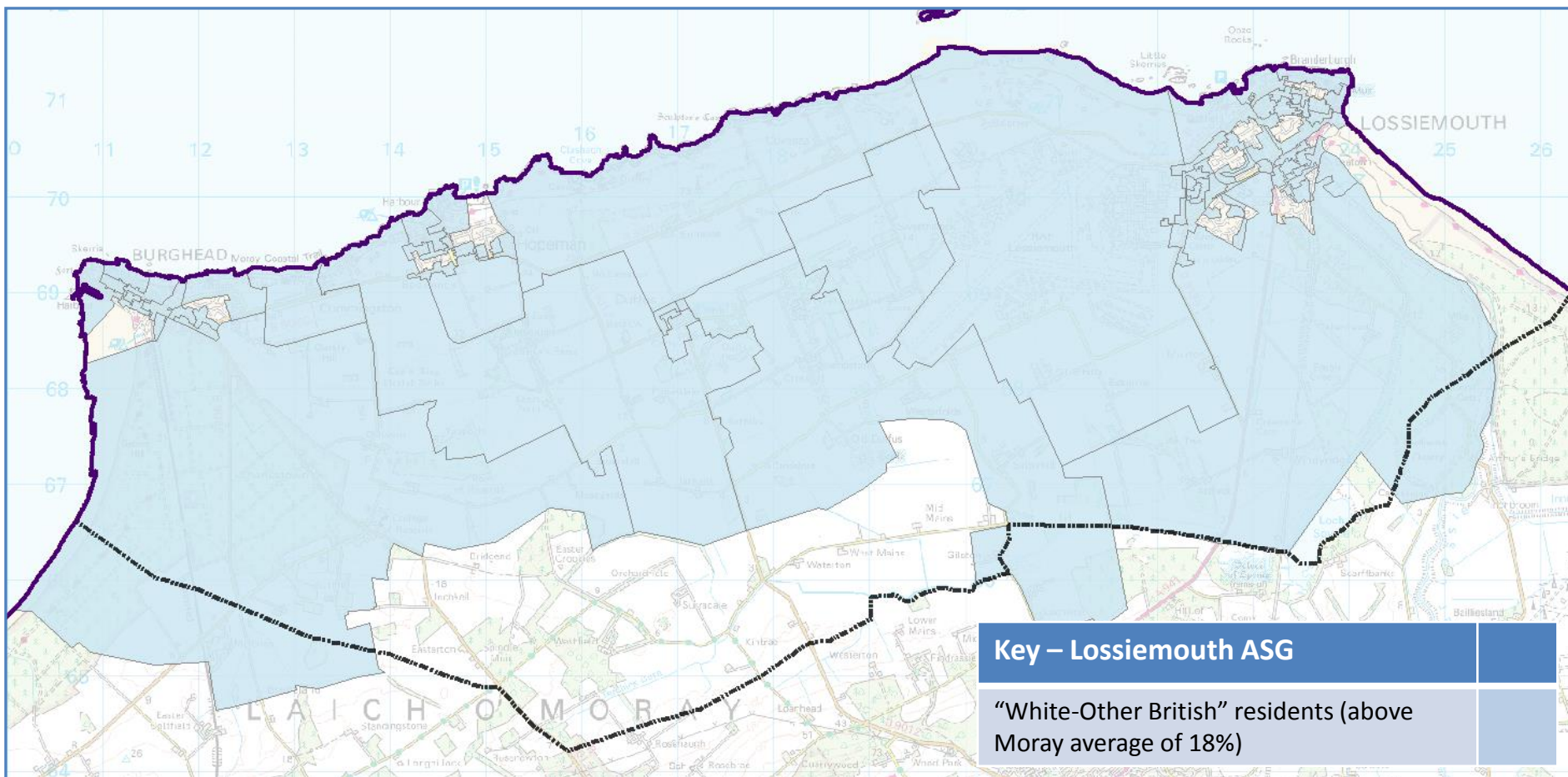


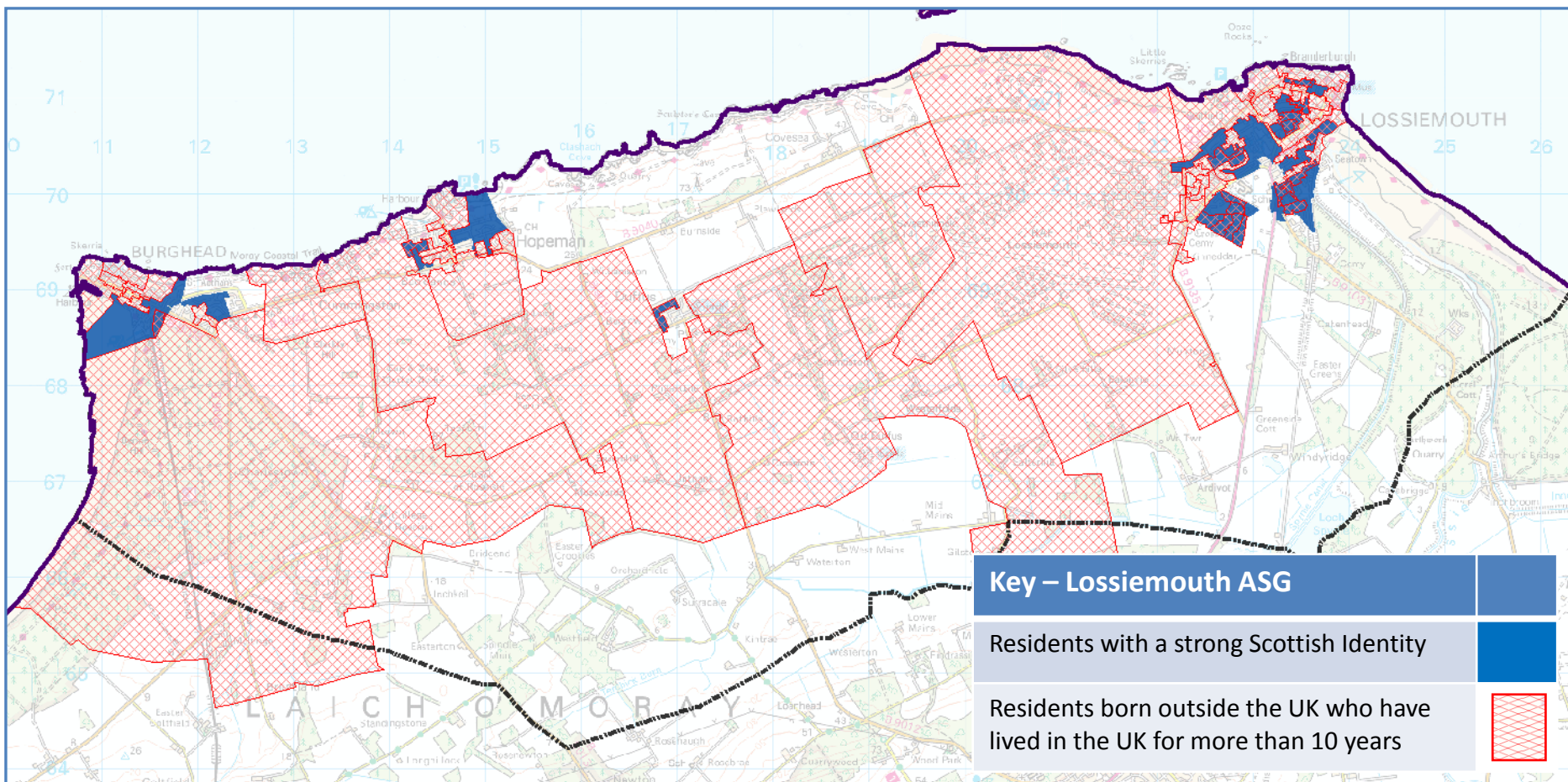
Duffus has the highest percentage of people aged 45 and above in Moray.

Its has a significantly higher percentage of married/co-habiting households than the Moray average which may suggest an availability of unpaid care if needed. However, it would also indicate that the carers themselves would be older.

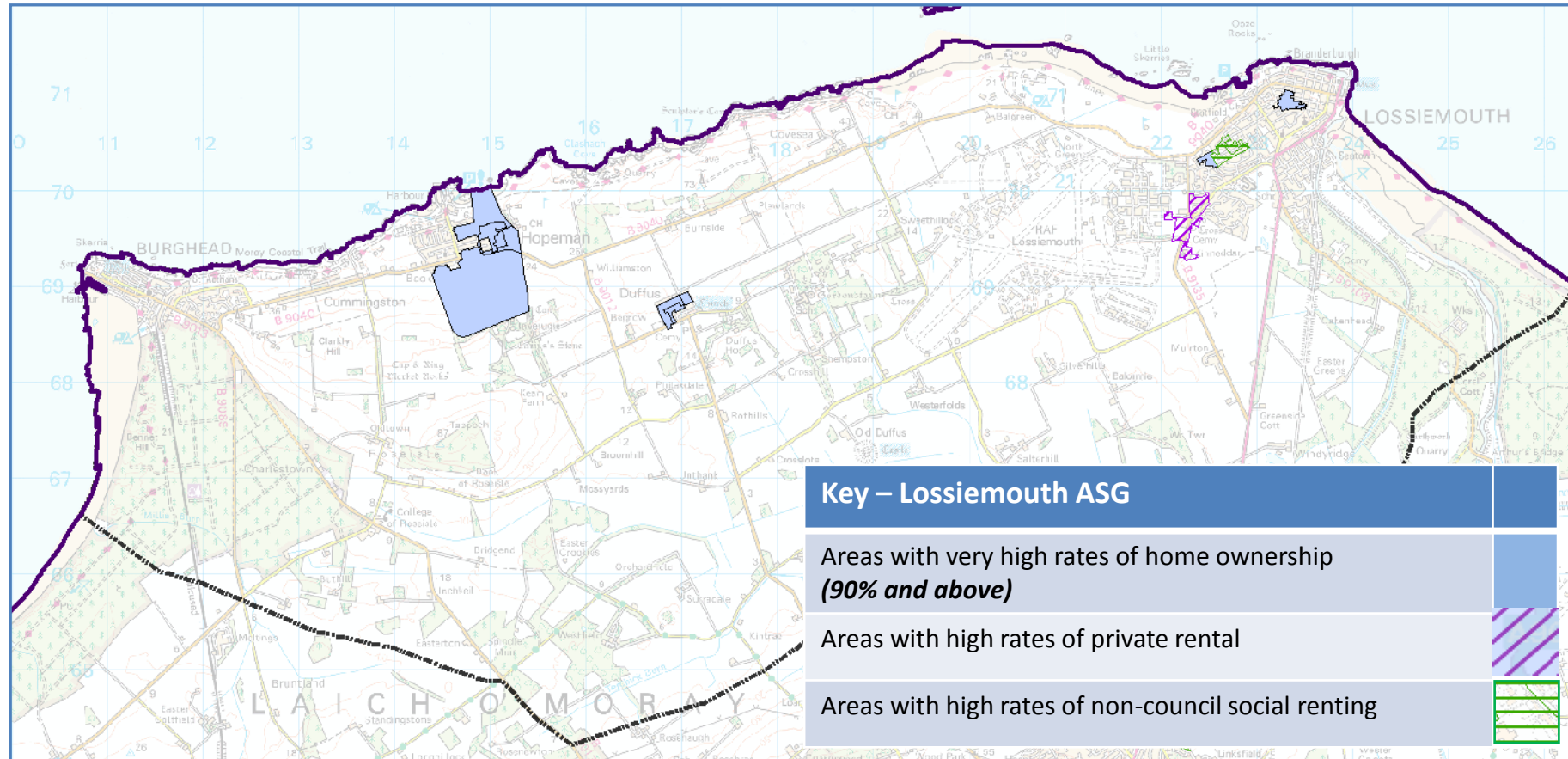
Duffus, including whether individuals feel limited by their long term condition or disability, are very positive despite its older population demographic and a significantly higher percentage of people who have one or more long term conditions. Duffus also has a lower rate of emergency admissions for the 65+ age group than the Moray average. The area has the highest percentage of residents providing unpaid care in Moray and this may provide part explanation for these positive outcomes.

LOSSIEMOUTH – IDENTITY



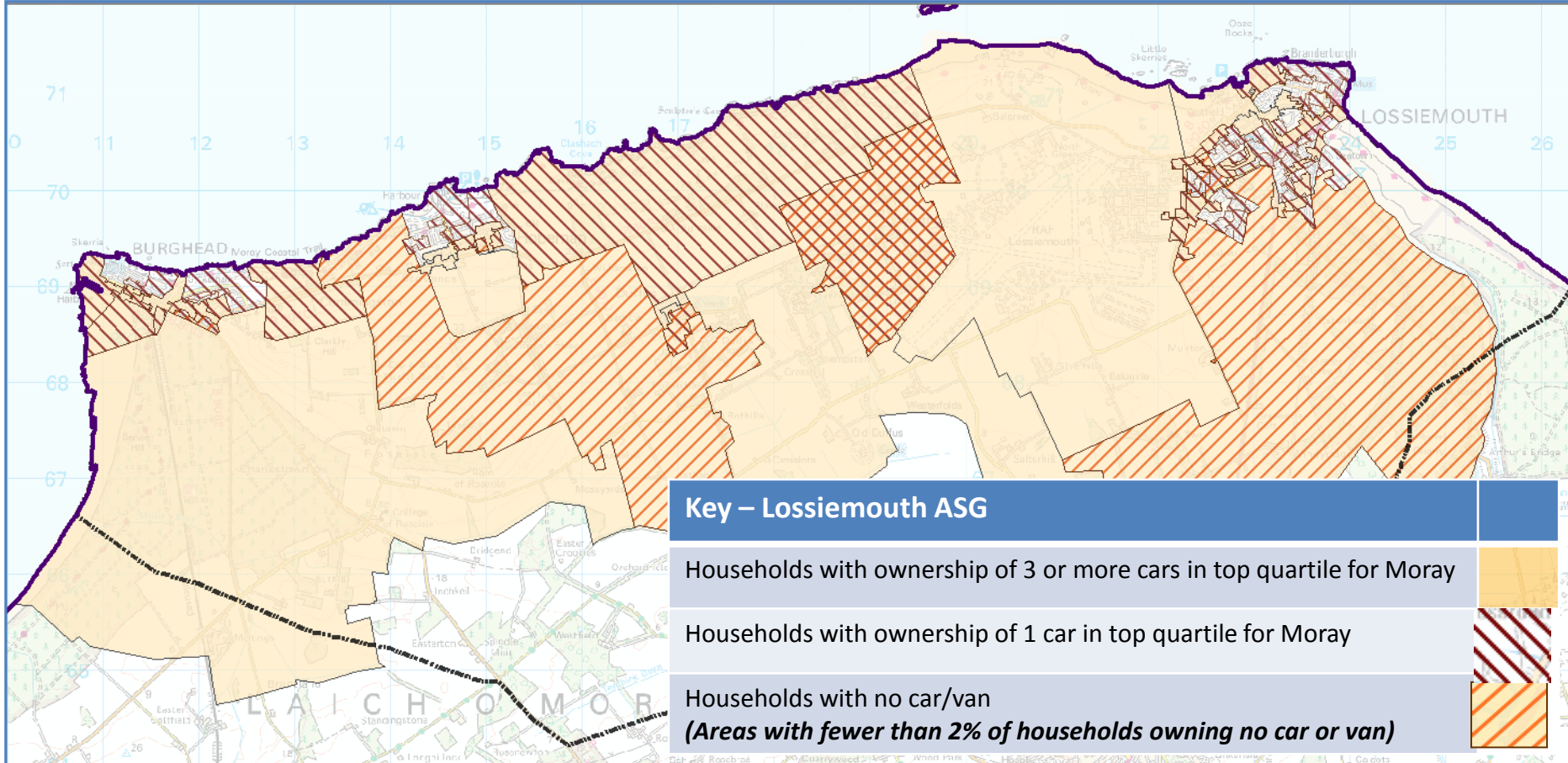


LOSSIEMOUTH – HOUSING



Levels of home ownership are higher than the Moray average, particularly in Duffus and Hopeman. In fact these towns are ranked first and second in Moray, respectively, for home ownership.

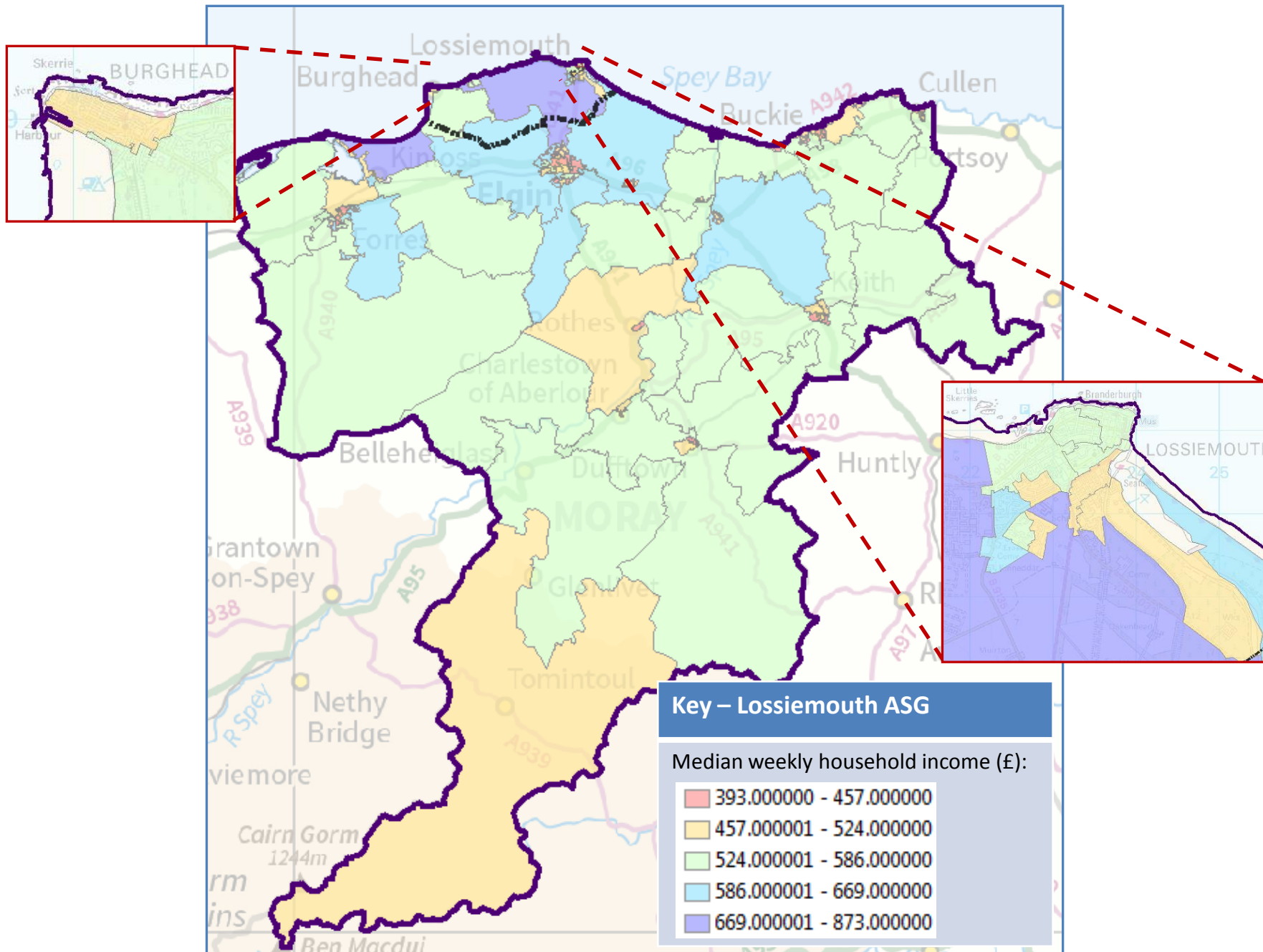
The town of Lossiemouth differs in that private and non-council social renting are more common here than the Moray average.

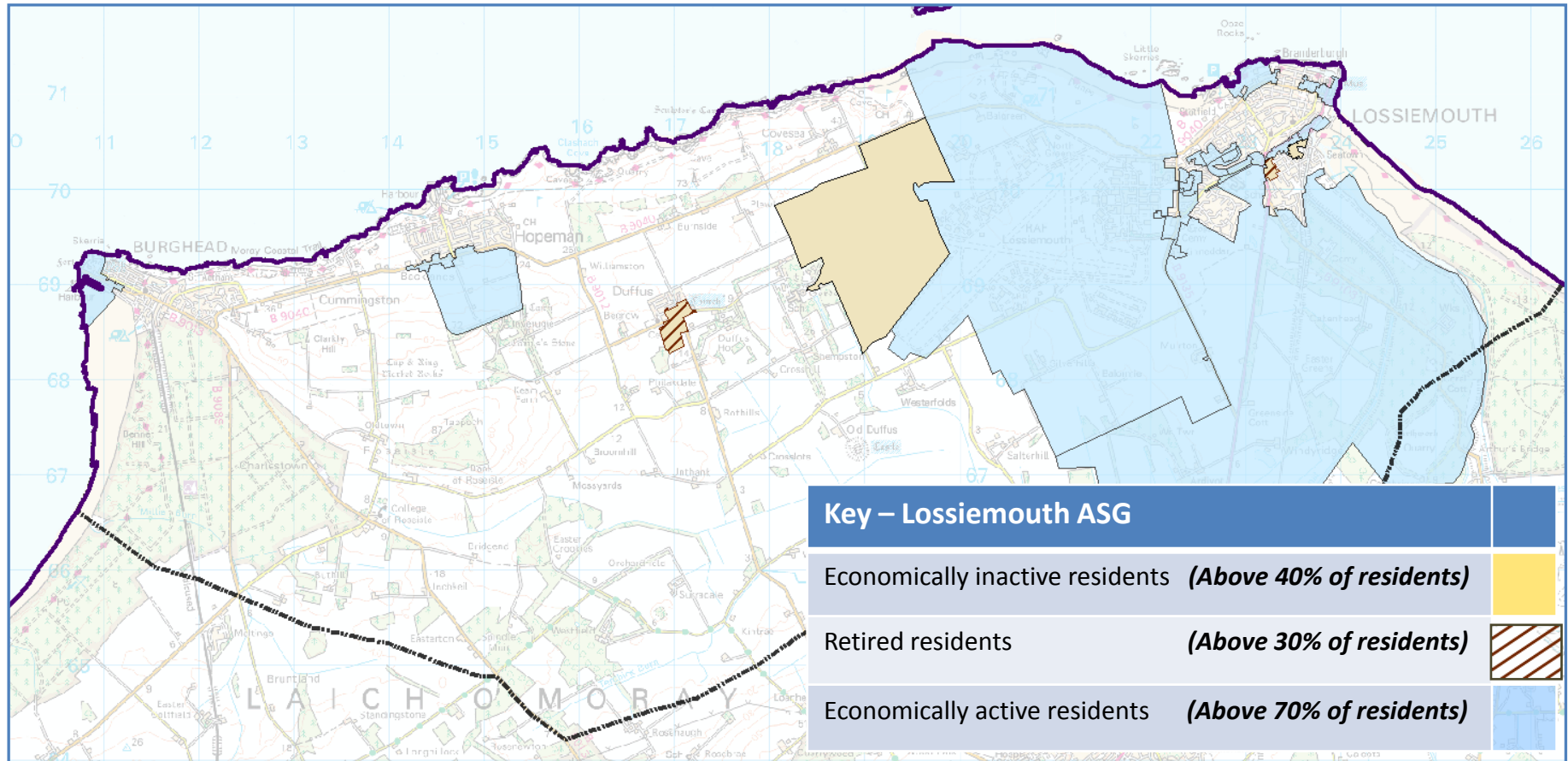


Duffus has the lowest percentage of households in Moray with no car/van; instead there is evidence that multiple car ownership is very common here.

Rates of multiple vehicle ownership are also slightly above the Moray average in both Burghead and Hopeman, whereas single vehicle ownership is more common in the town of Lossiemouth.

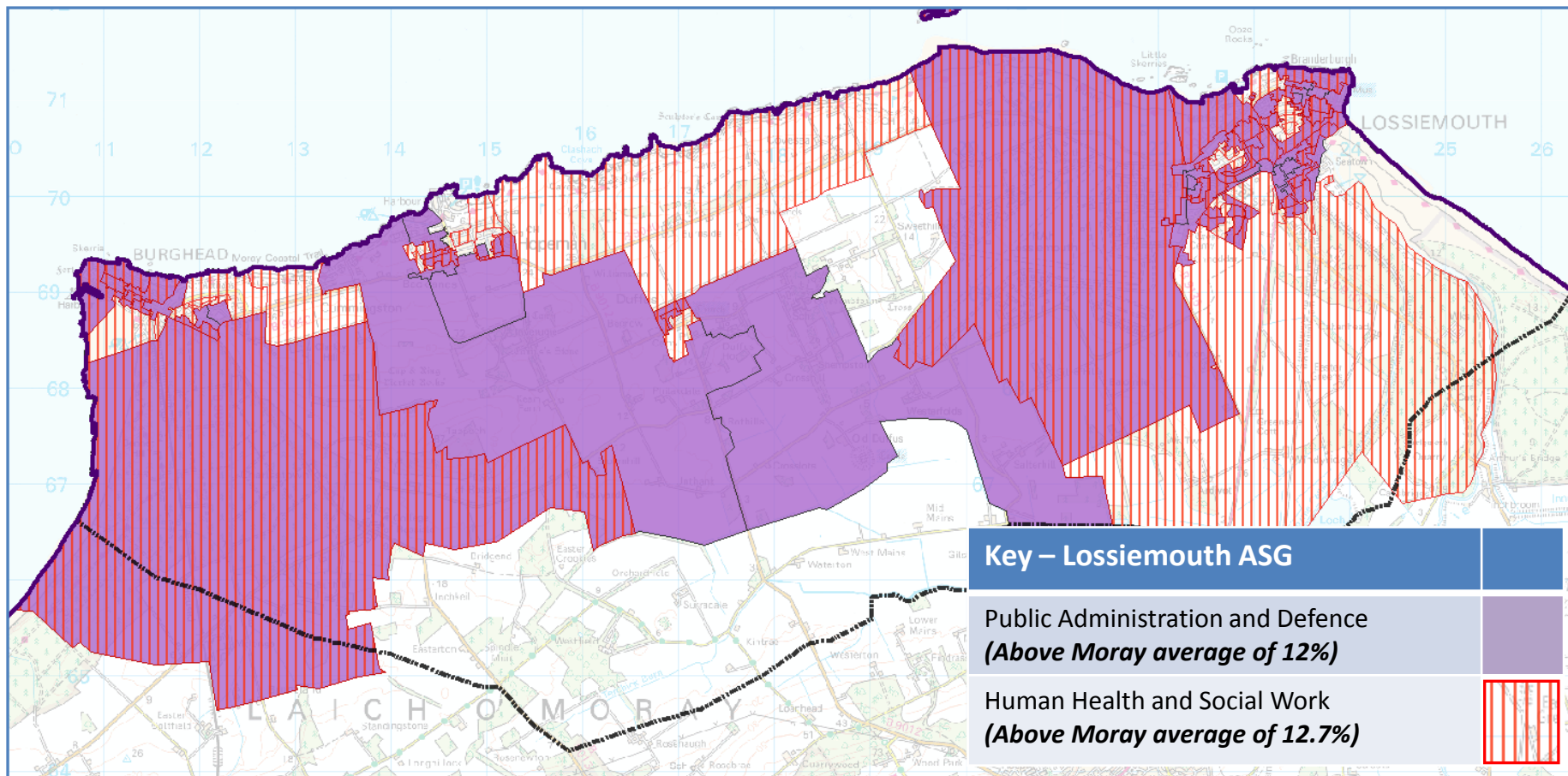
LOSSIEMOUTH – ECONOMY AND LABOUR



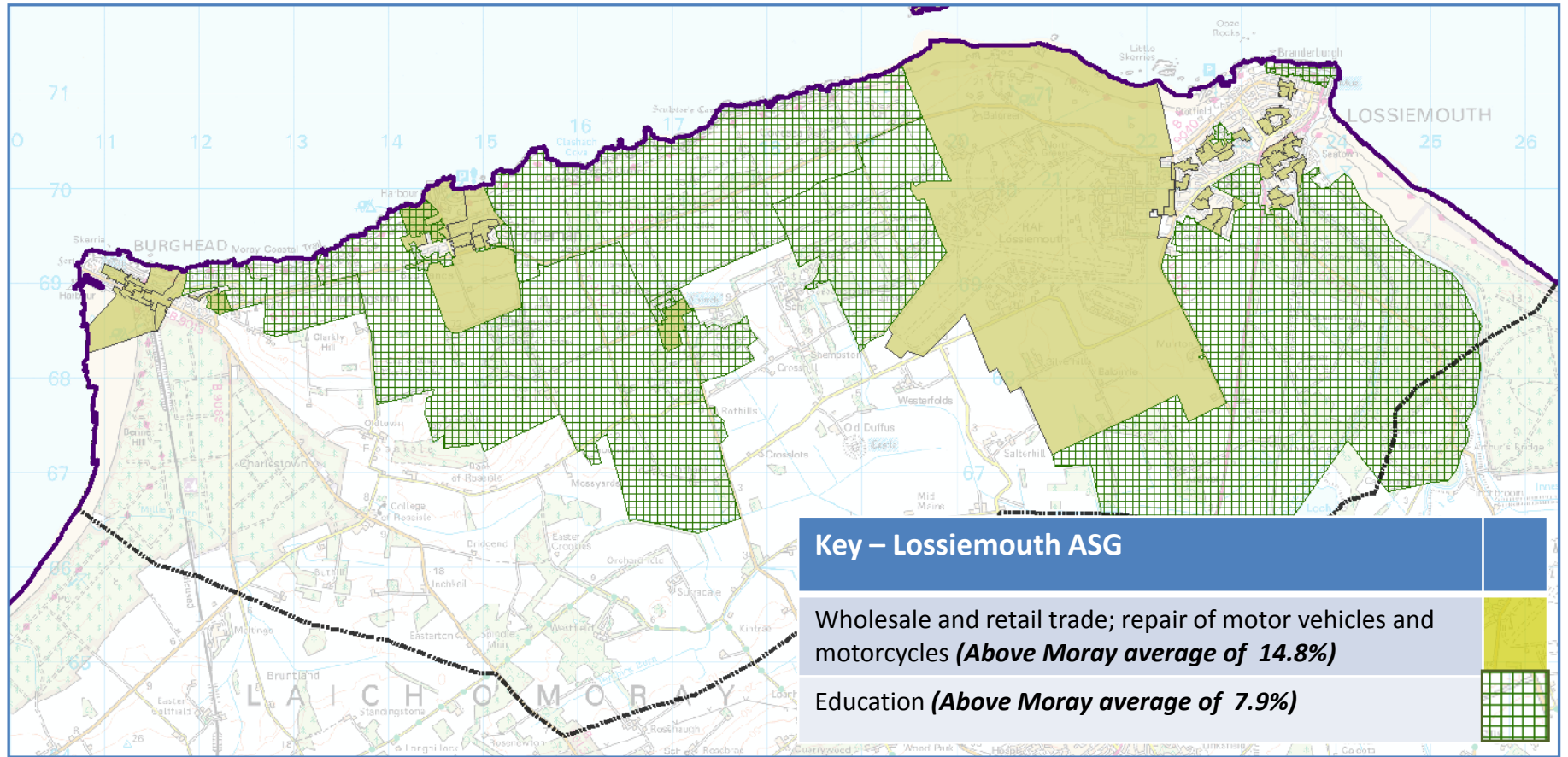


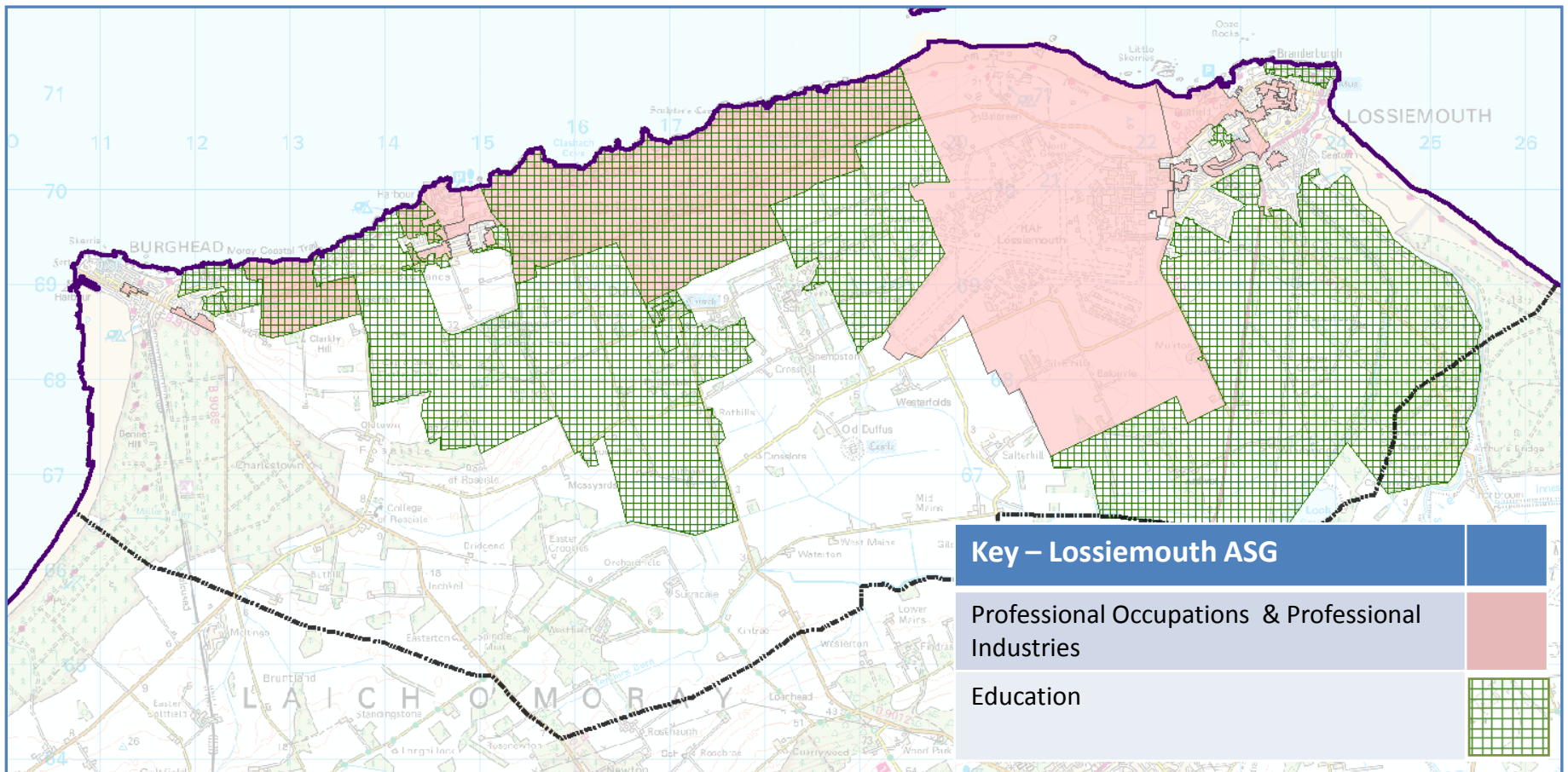
In line with its older population, Duffus has the highest rate of economically inactive and also retired people in Moray.

As before, the town of Lossiemouth has a relatively young age profile. It is therefore not surprising that the town has more economically active people than the Moray norm; in particular, the rate of full-time employment is significantly higher here.

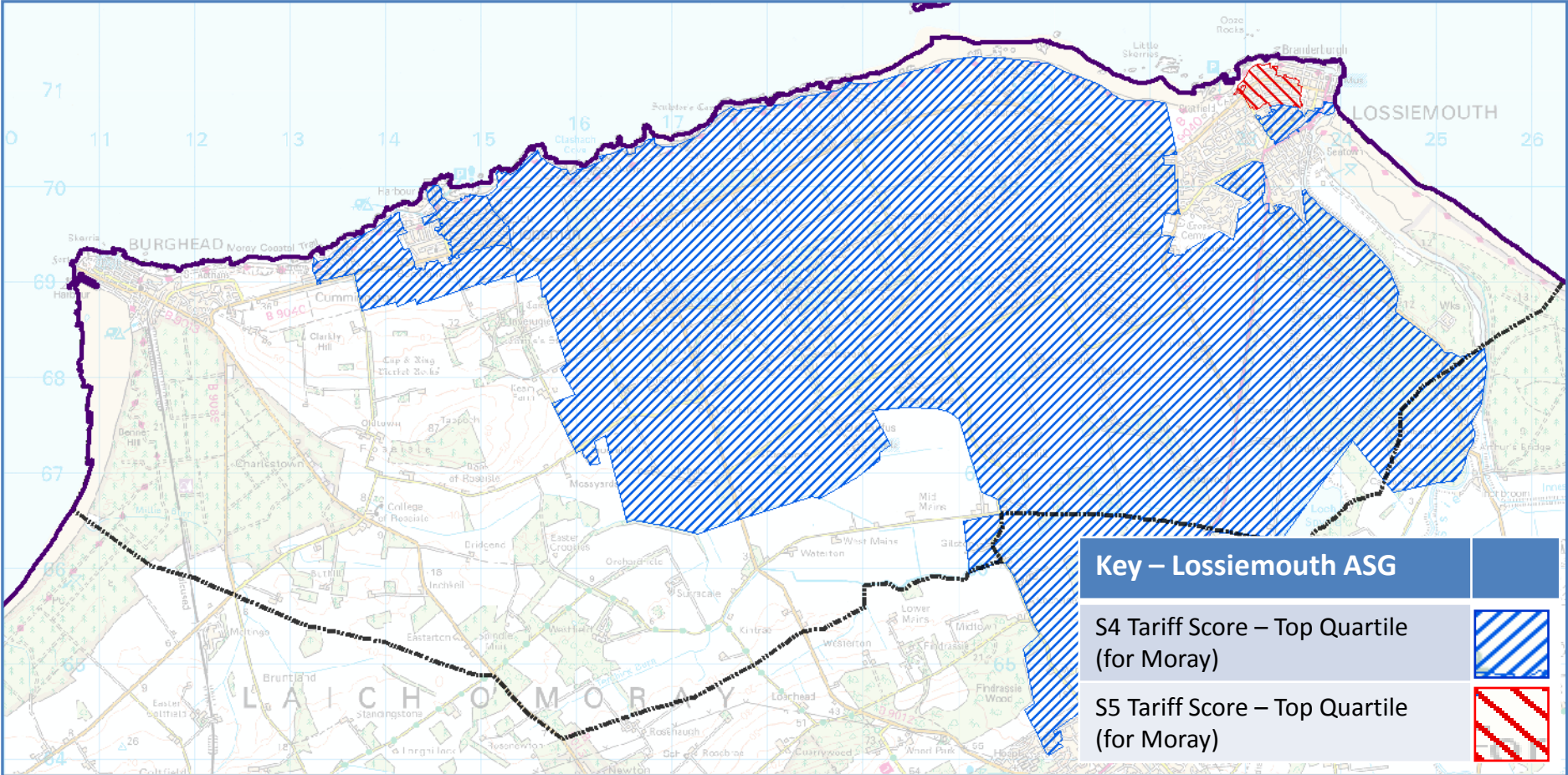


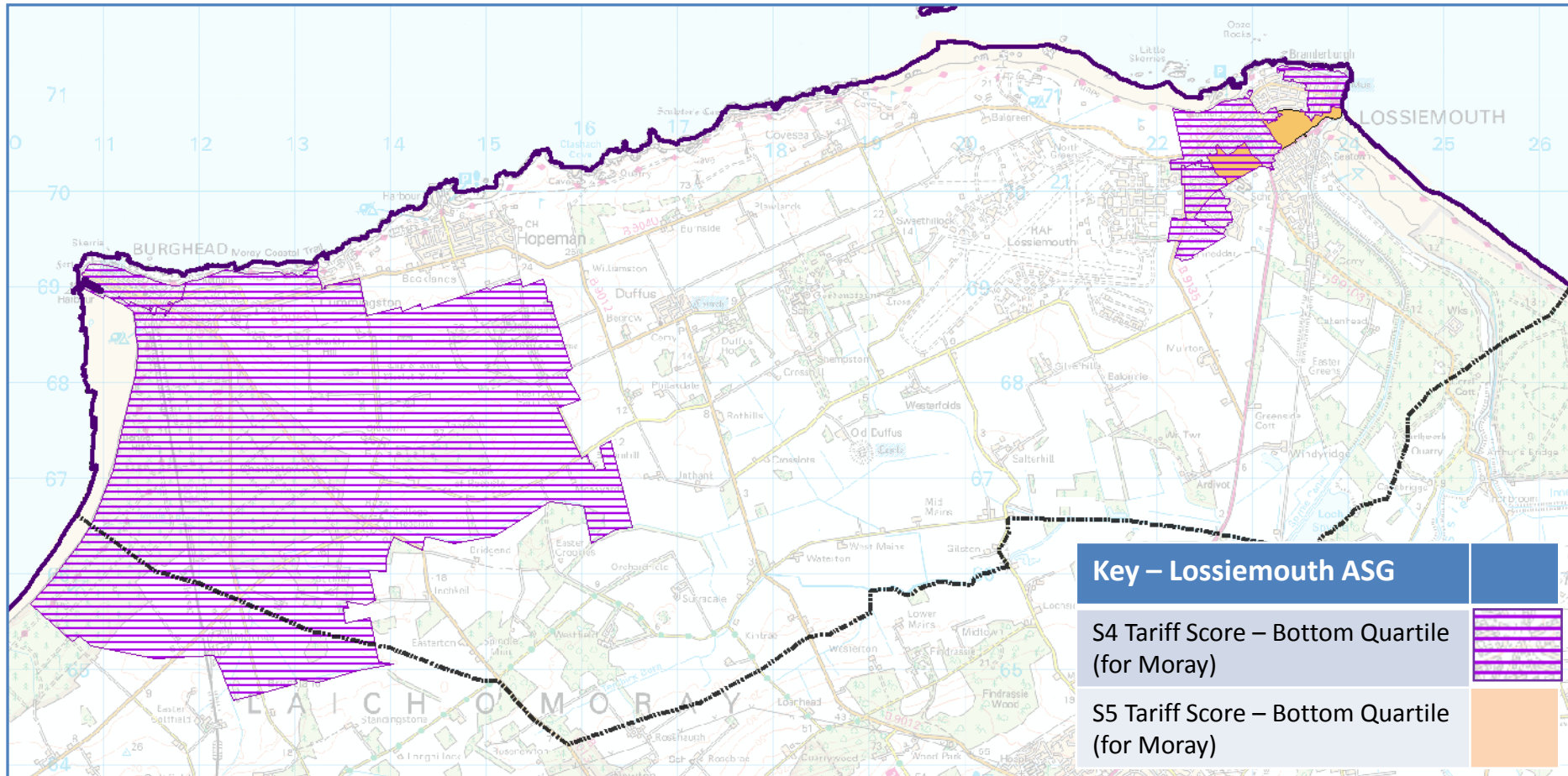
As might be expected, the most common industry in the town of Lossiemouth is public administration and defence: the rate of employment being over twice the Moray average. Elsewhere, human health and social work, education, and wholesale and retail trade; repair of motor vehicles and motorcycles are the predominant industries.

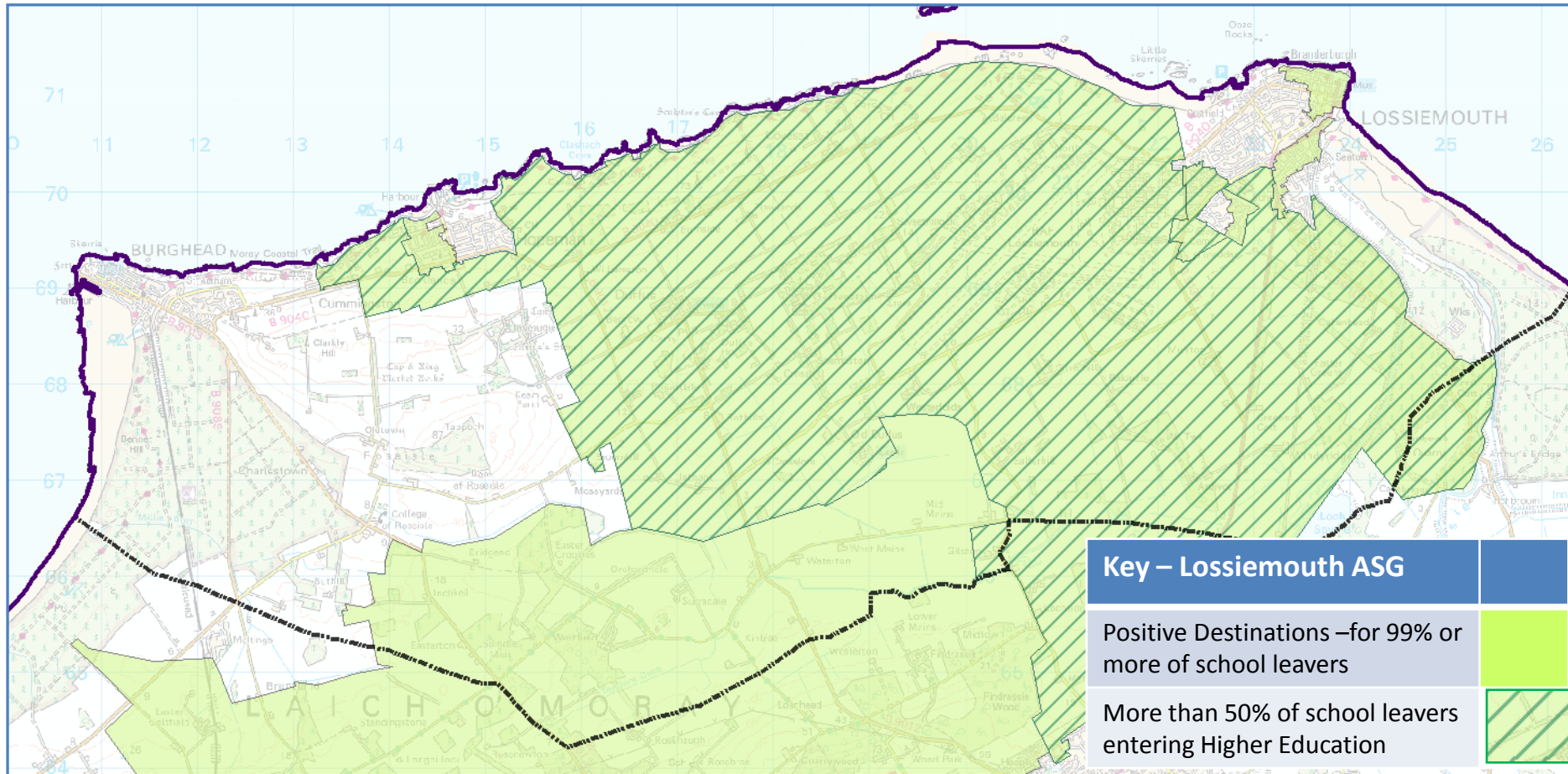




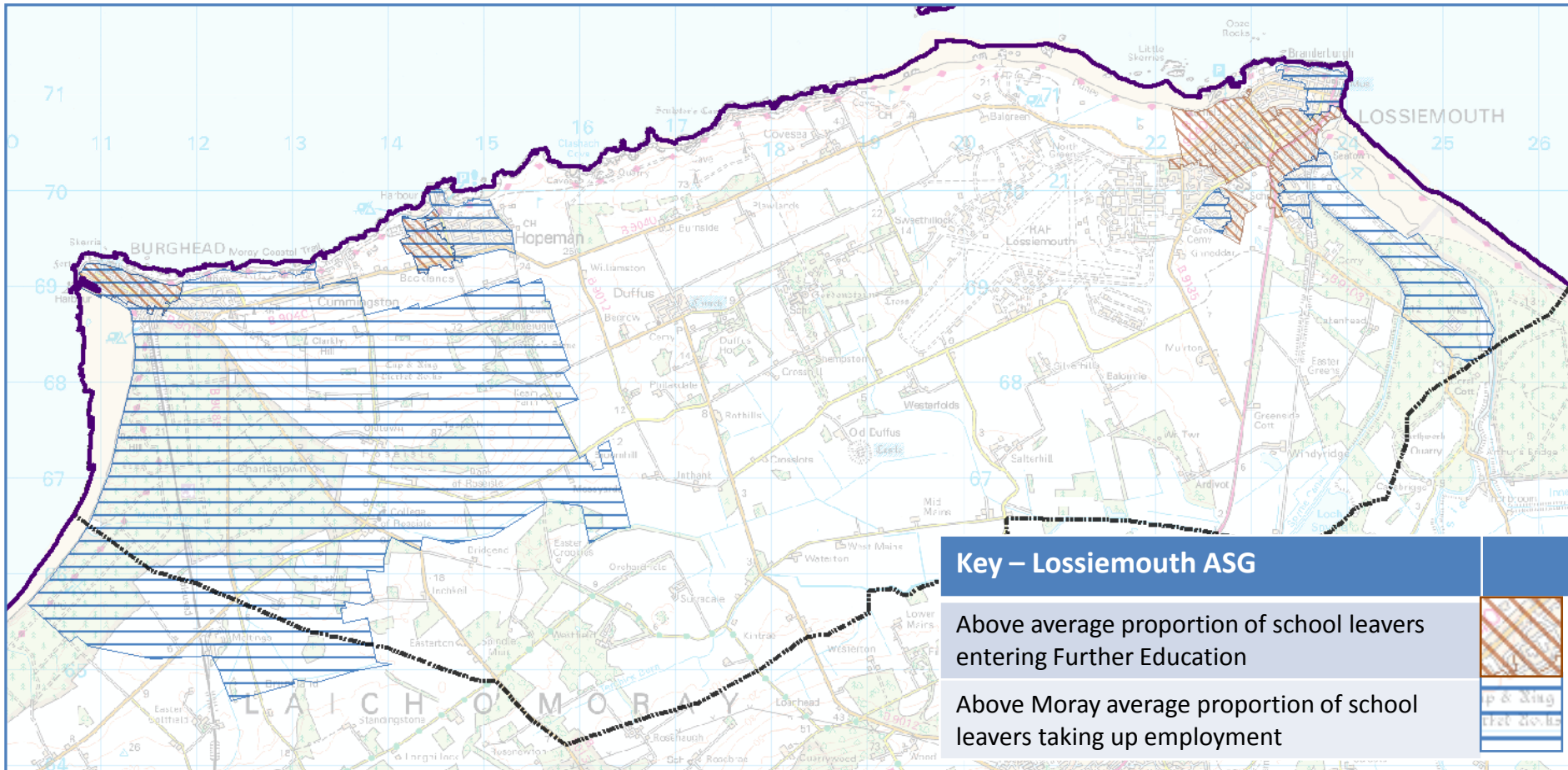
LOSSIEMOUTH – EDUCATION





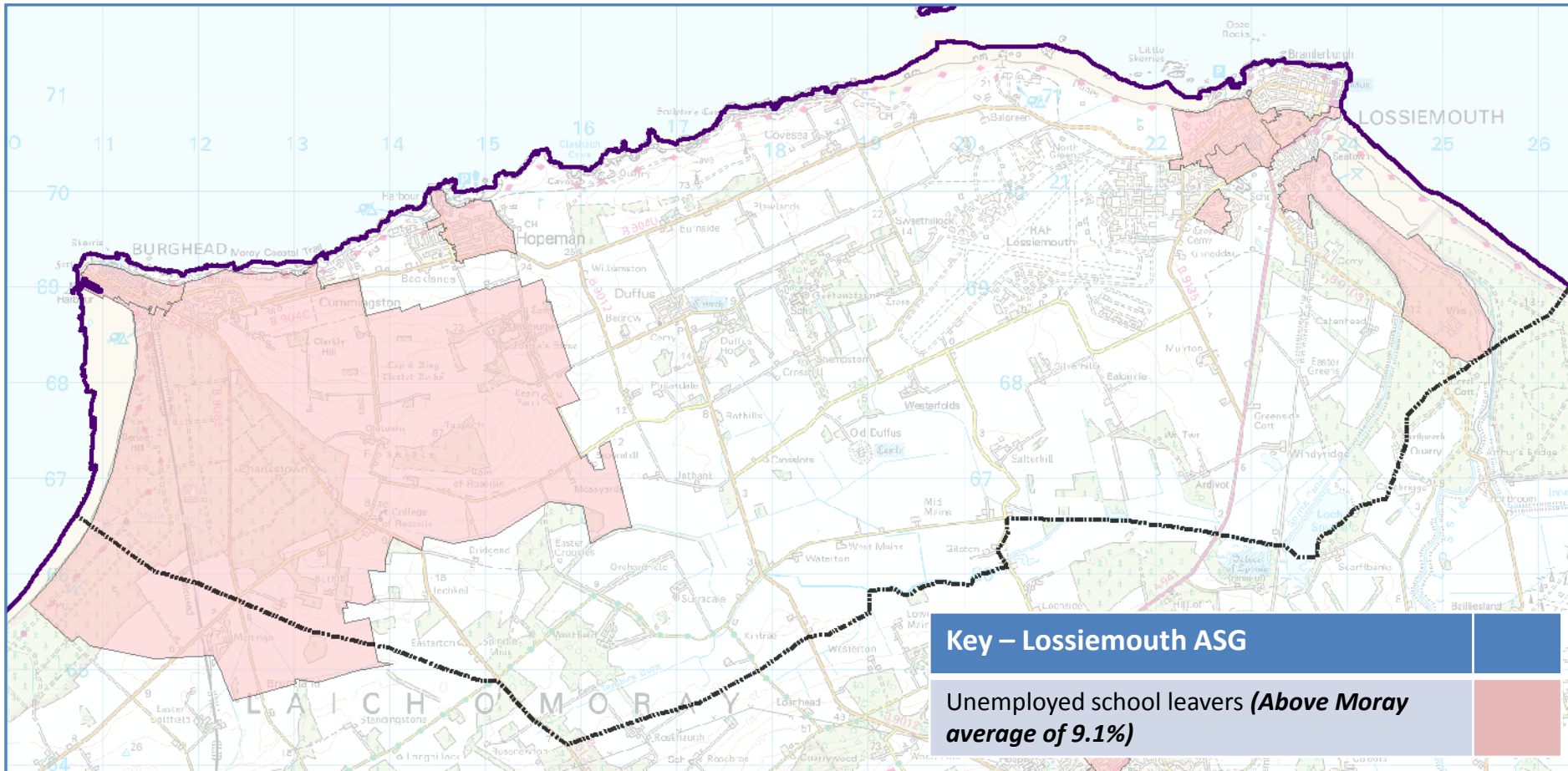


Linking with the levels of attainment in Duffus, a significantly higher percentage of its school leavers enter positive destinations than the Moray average. More than half go onto Higher Education.

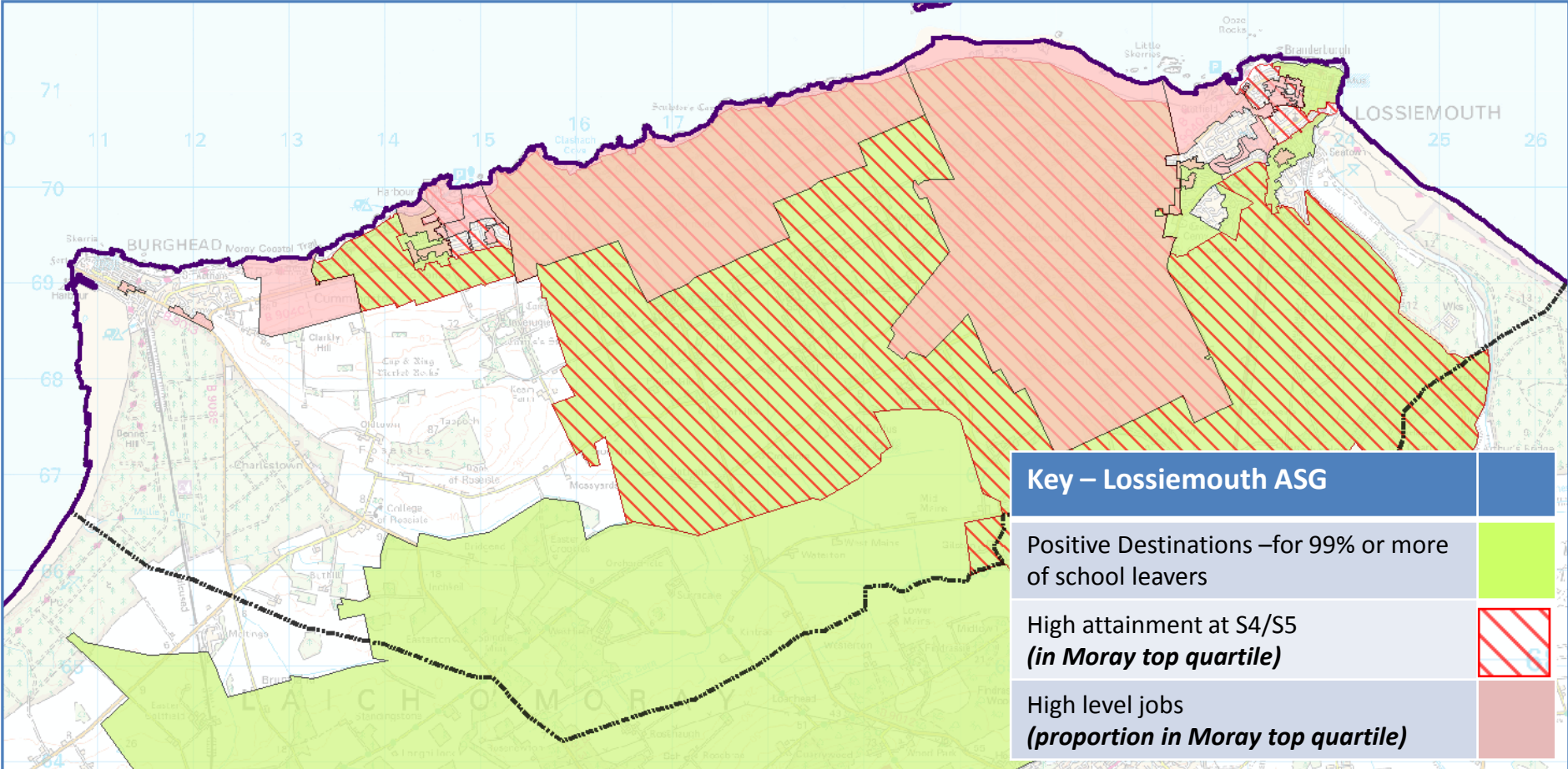


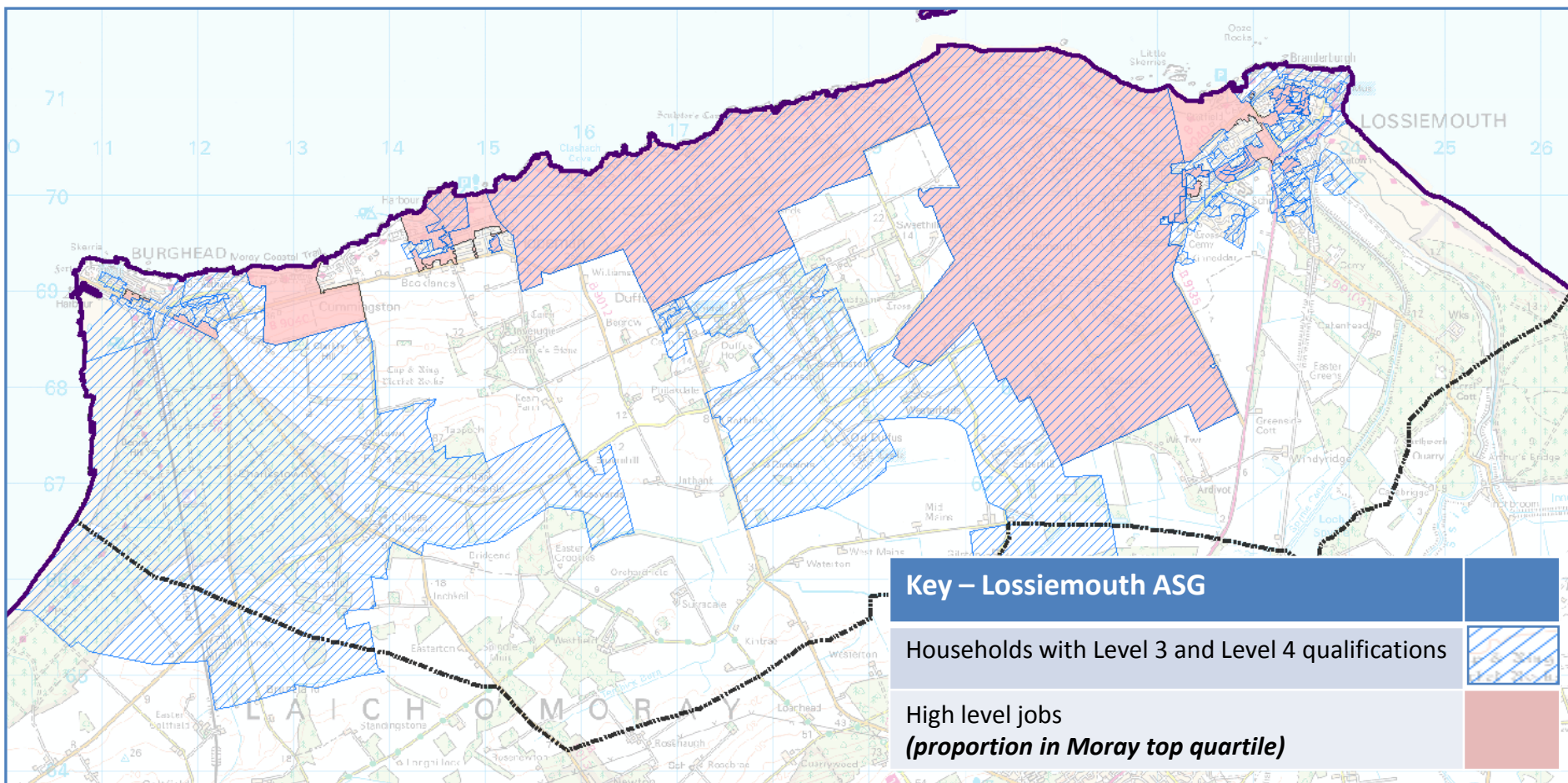
While young people from Hopeman follow a similar pattern to the Moray ‘norm’ there is a slightly higher percentage choosing work as their post-school destination.

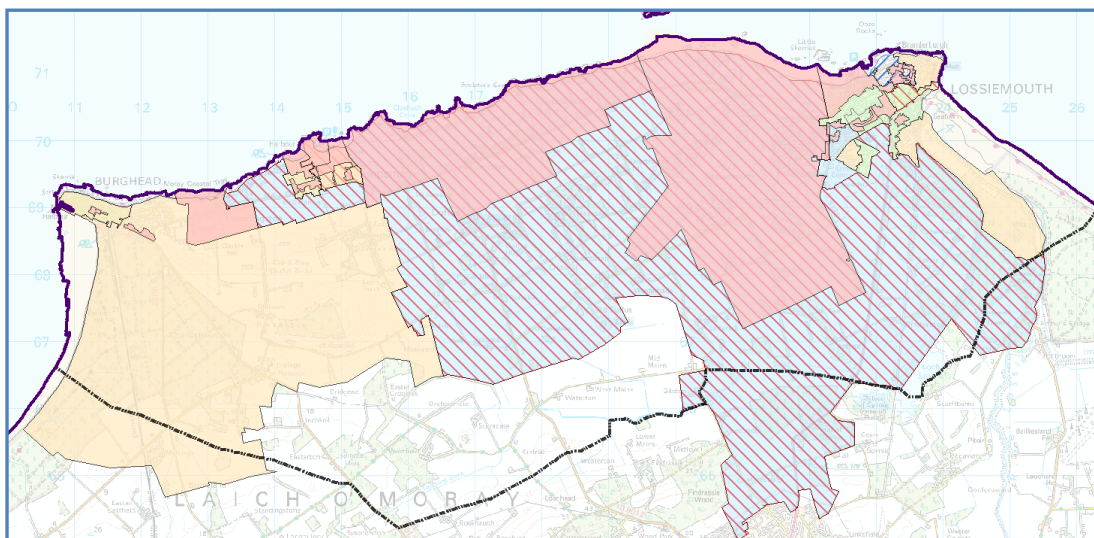
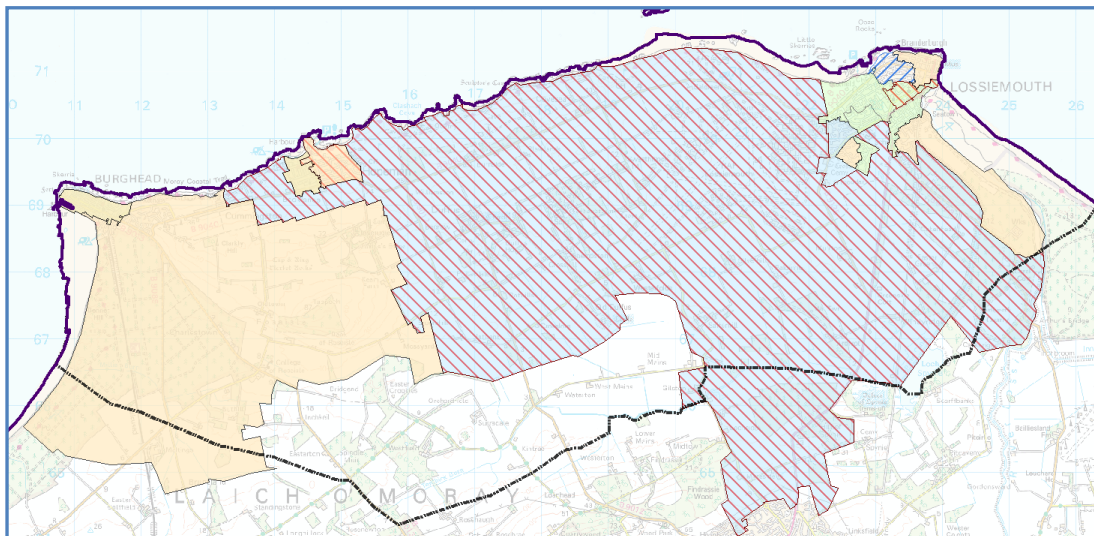
Given the lower levels of attainment in Burghead and the town of Lossiemouth it is perhaps not surprising that students from these areas are more likely to enter employment and further education, respectively, these being options that do not necessarily require a high level of qualification



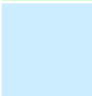





While employment may seem like a feasible option for those with fewer qualifications there are fewer ‘traditional’ industries and less employment in lower skilled jobs in this area. There is perhaps a correlation between this and the slightly elevated rates of unemployment amongst school leavers in Burghead, Hopeman and the town of Lossiemouth.

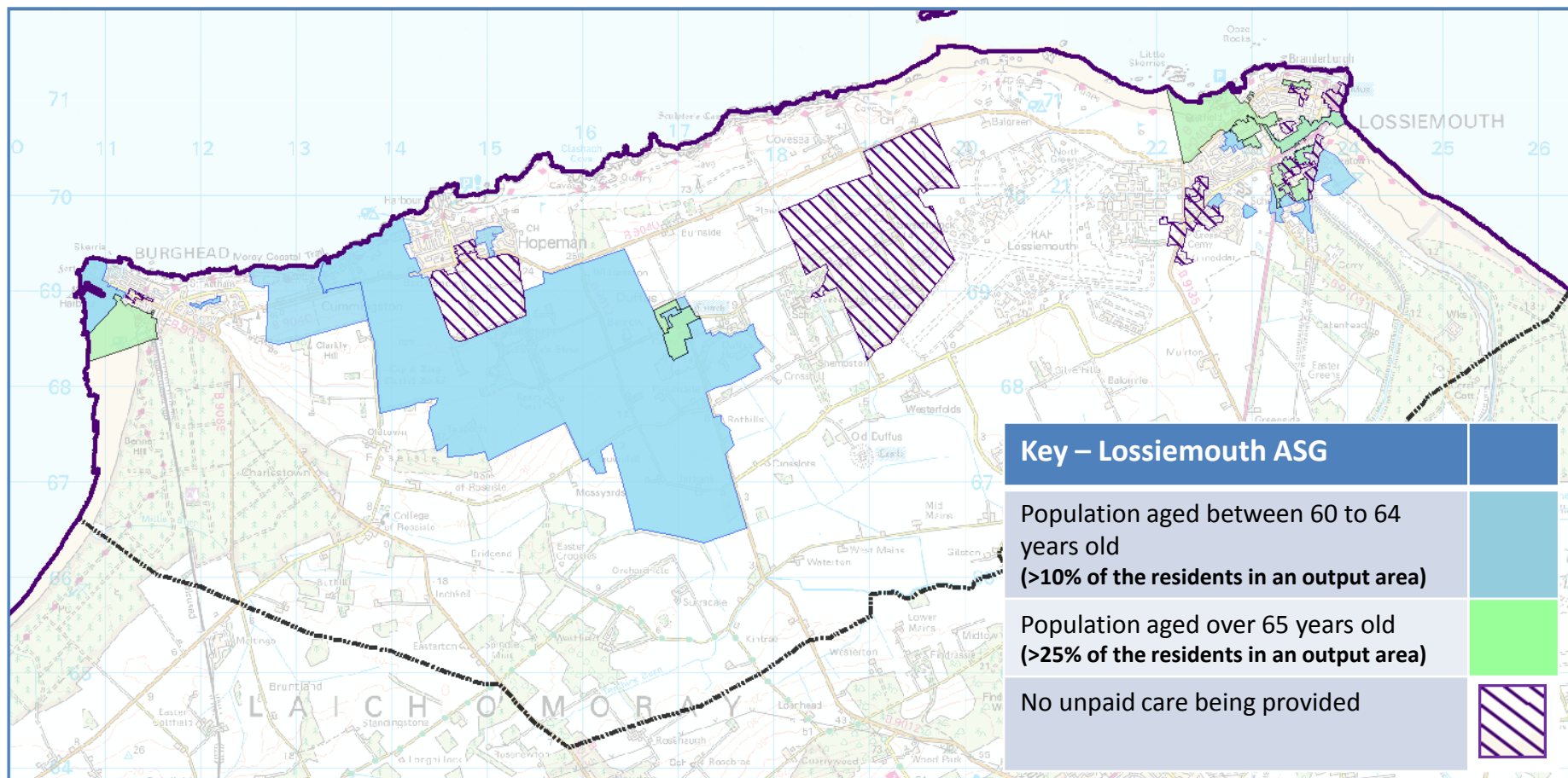


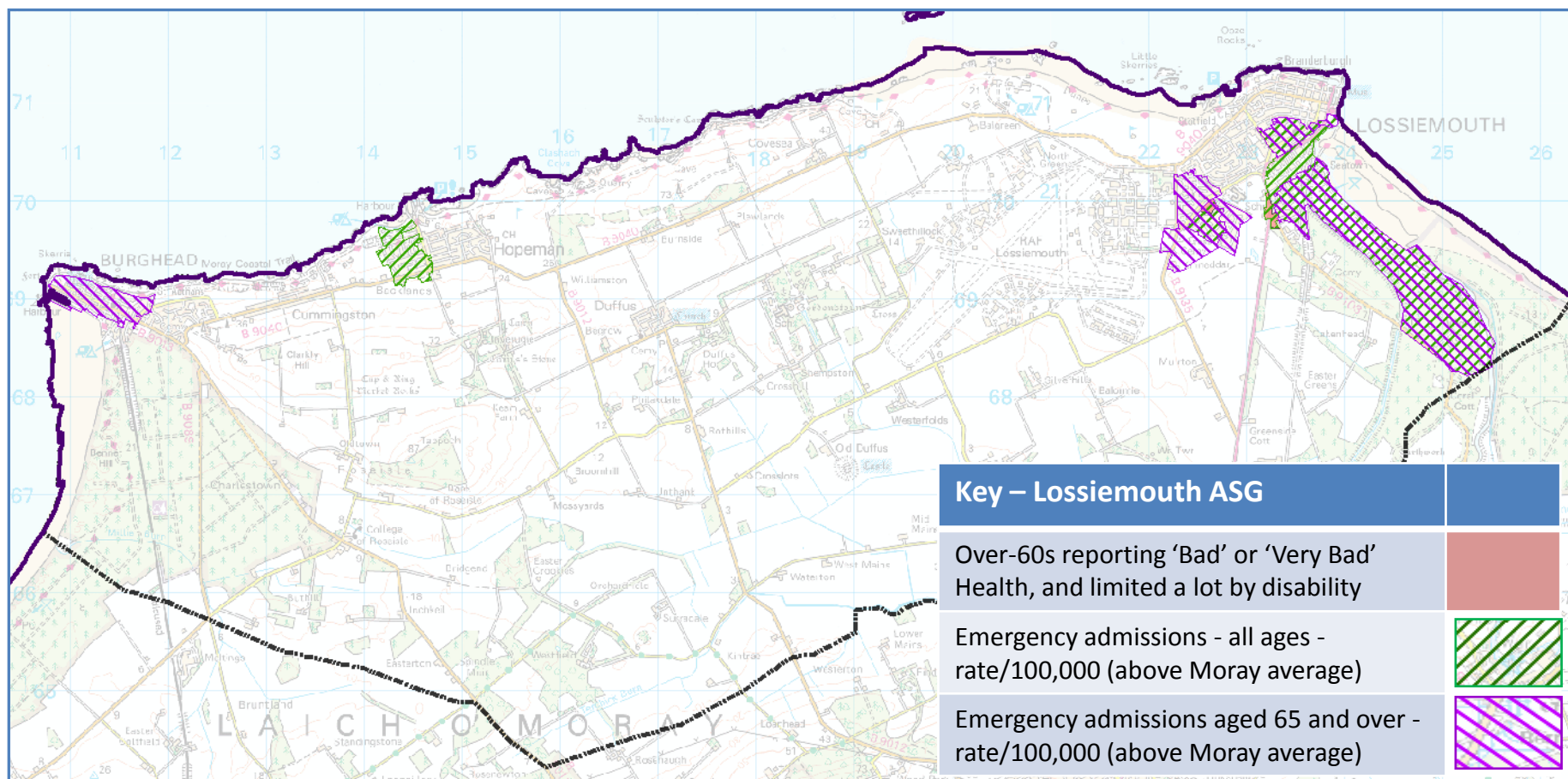


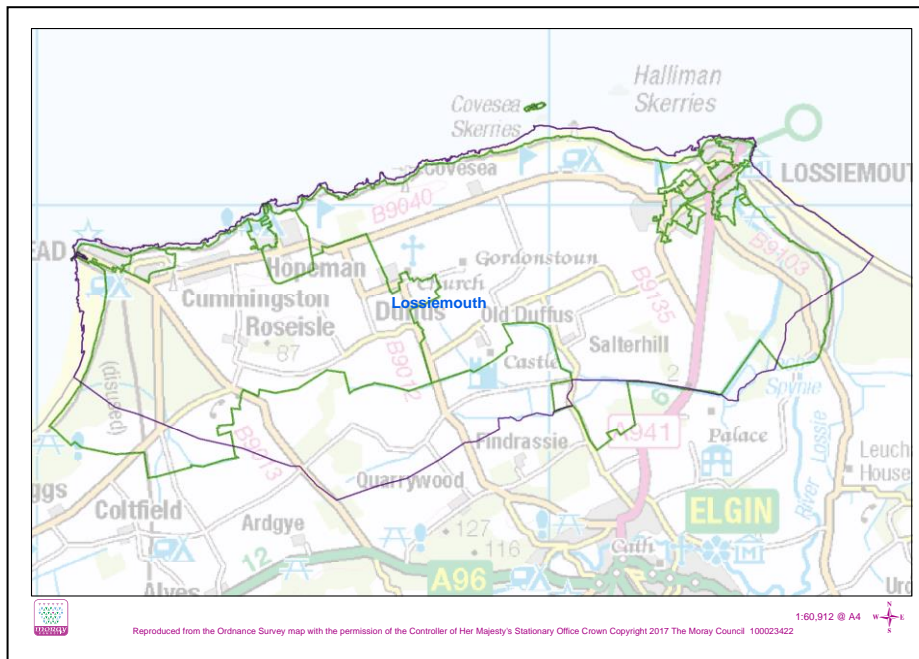


Key – Lossiemouth ASG	
School-leavers taking-up employment <i>(above Moray average)</i>	
School-leavers entering Further Education <i>(above Moray average)</i>	
School-leavers entering Higher Education <i>(above Moray average)</i>	
High attainment at S4 <i>(in Moray top quartile)</i>	
High attainment at S5 <i>(in Moray top quartile)</i>	
High level jobs <i>(proportion in Moray top quartile)</i>	

LOSSIEMOUTH – HEALTH AND SOCIAL CARE







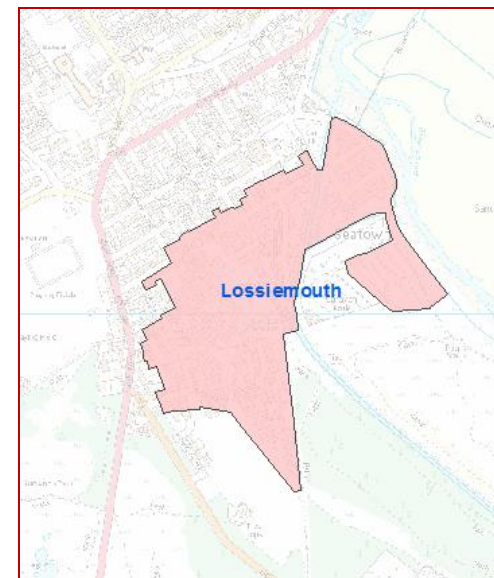
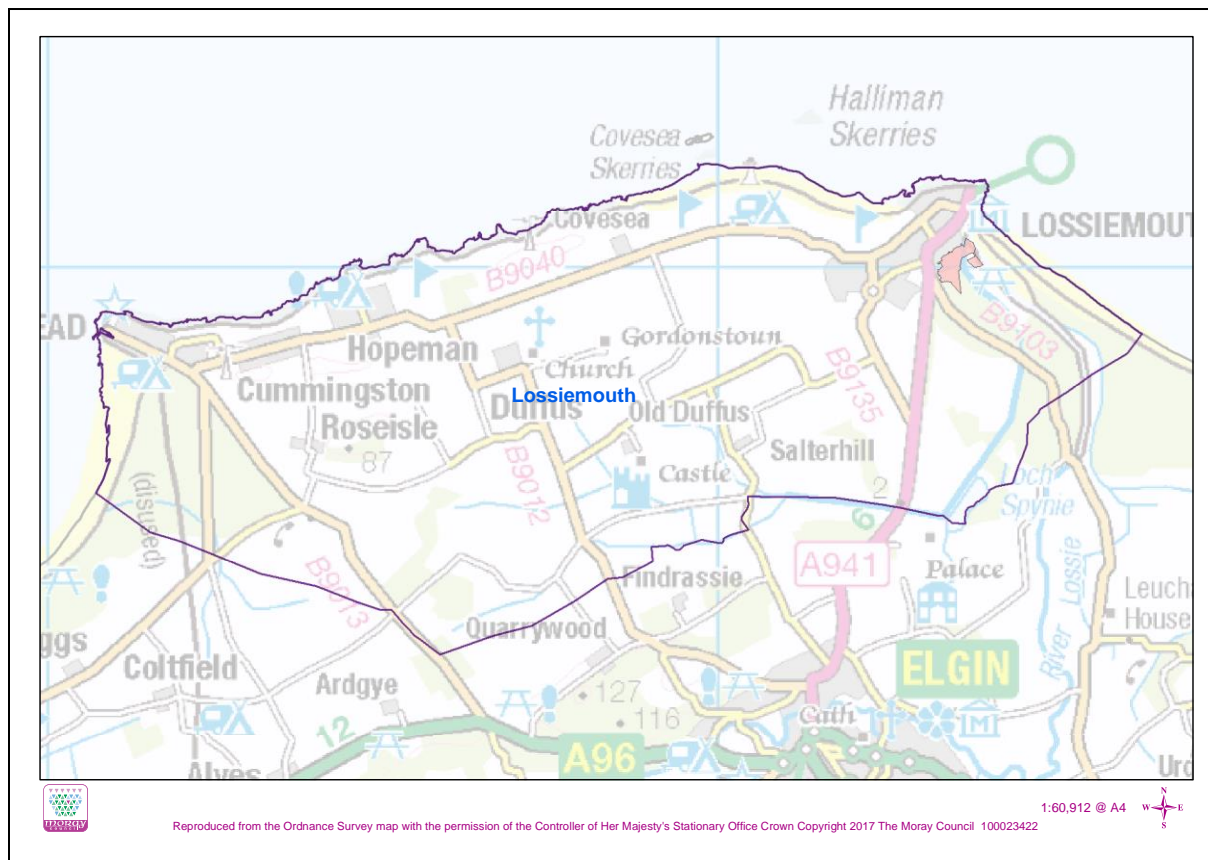
Data-zones in 1st and 2nd most deprived quintiles

17 SIMD 2016 data-zones correspond to the Lossiemouth ASG

LOSSIEMOUTH – SIMD DATA

Lossiemouth – SIMD Quintiles 1 and 2

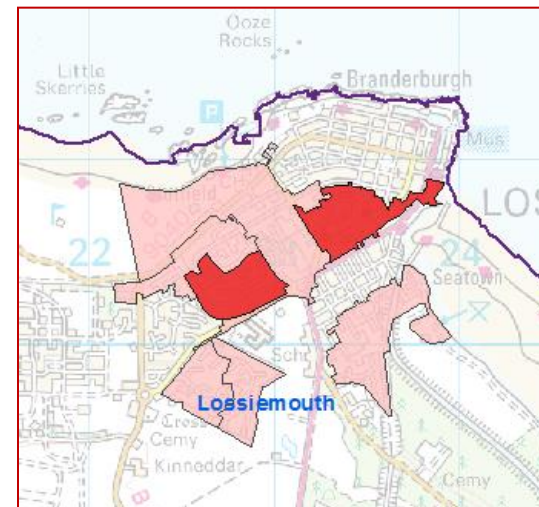
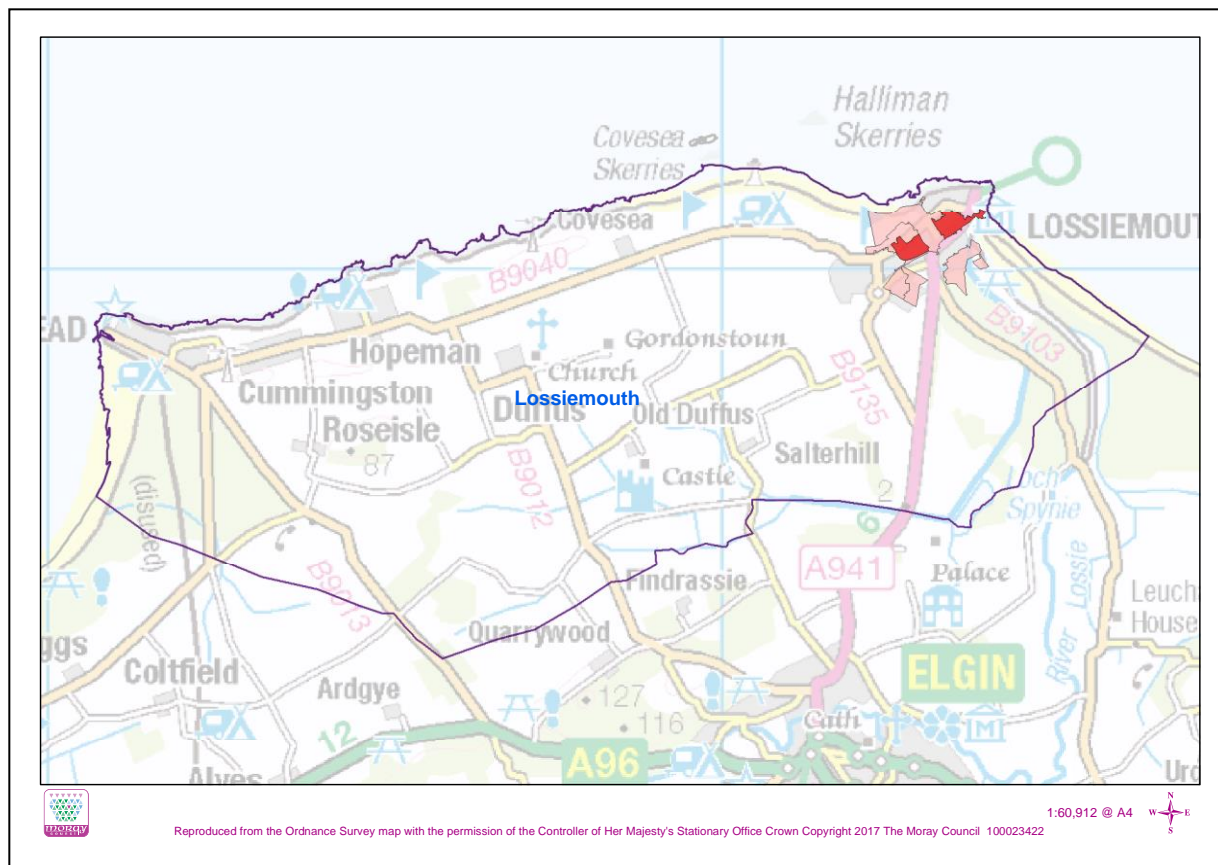
- Housing



- One data-zone in second most deprived quintile
- None in most deprived quintile

Lossiemouth – SIMD Quintiles 1 and 2

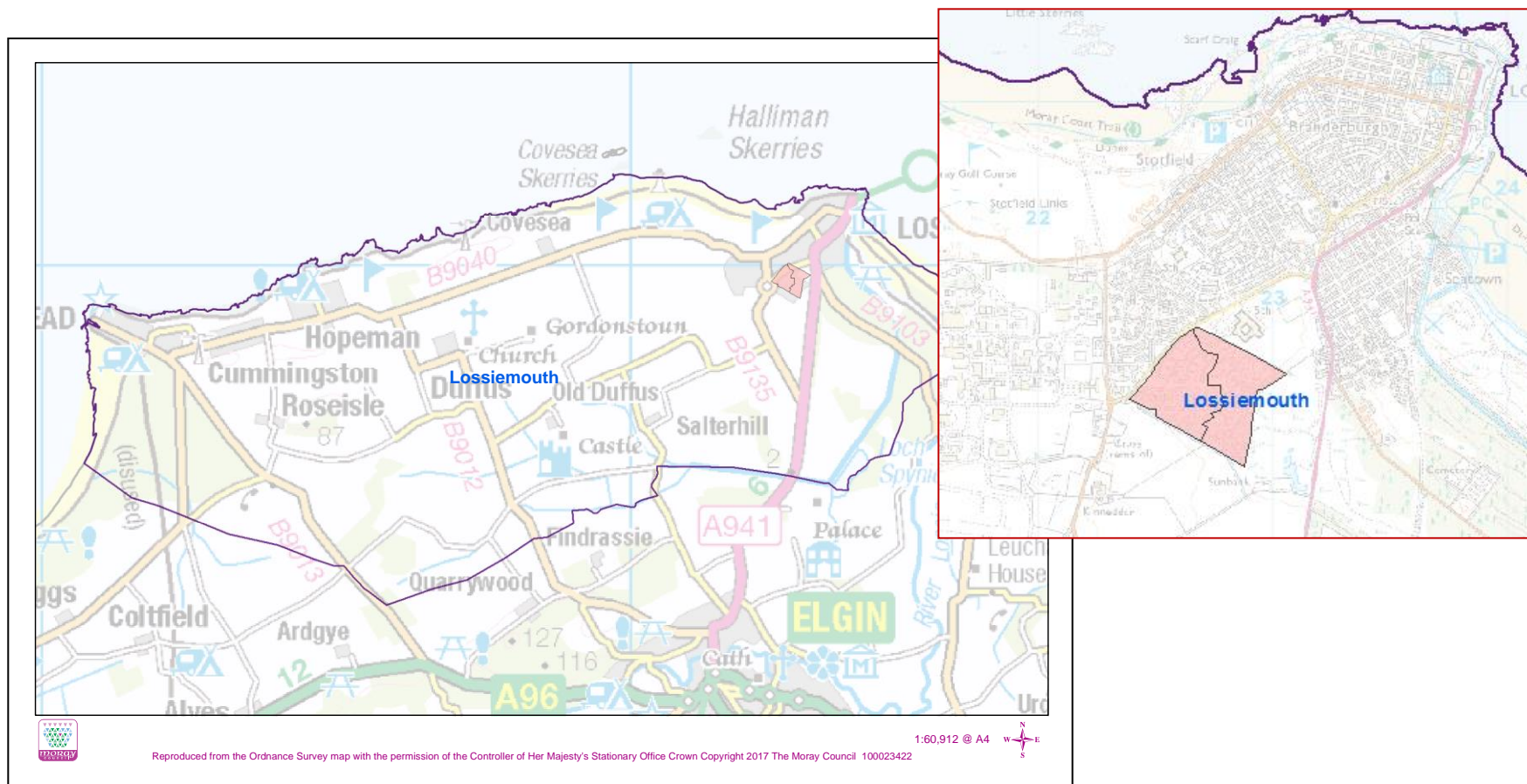
- Education



- 5 data-zones in second most deprived quintile
- 2 in most deprived quintile

Lossiemouth – SIMD Quintiles 1 and 2

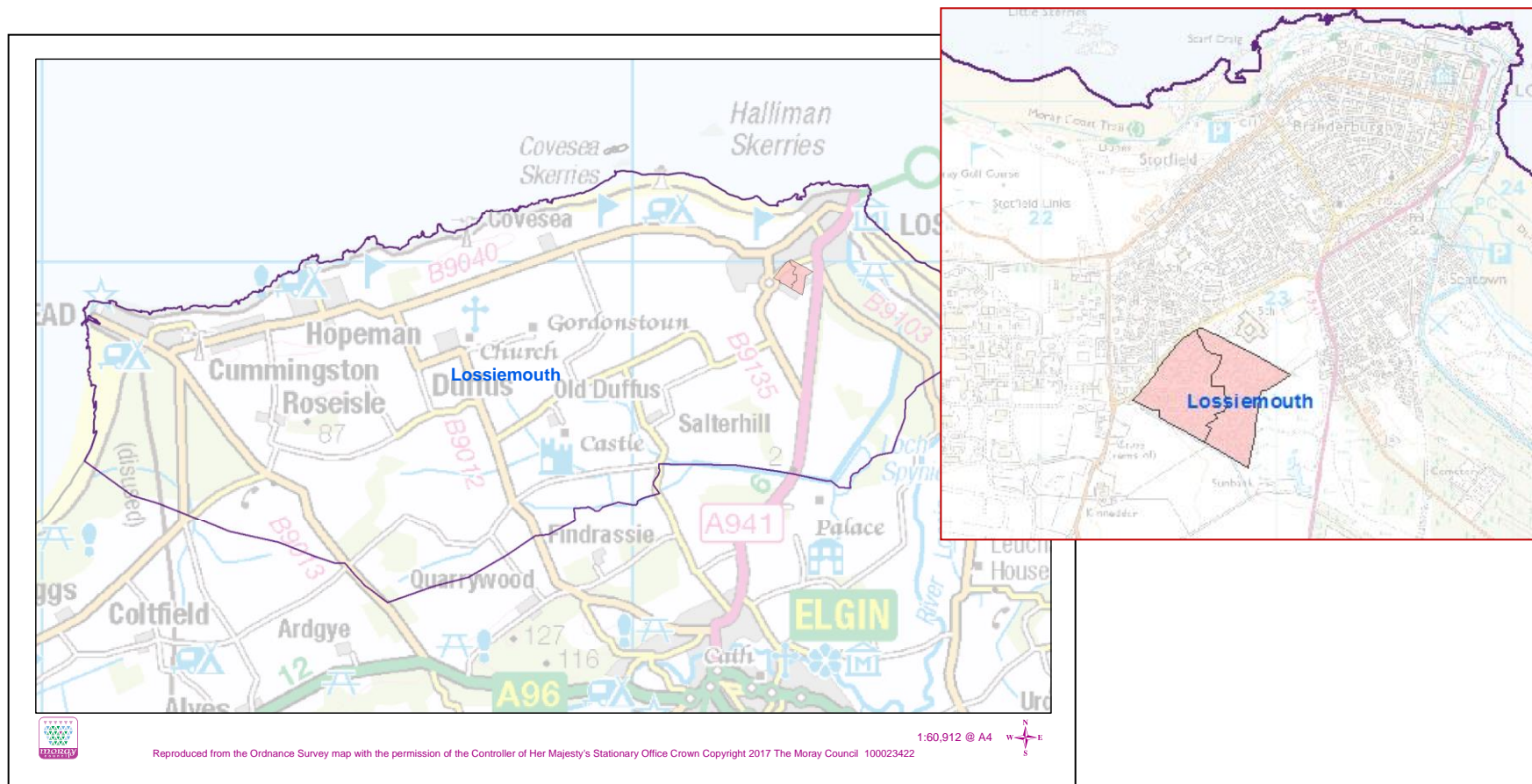
- Health



- 2 data-zones in second most deprived quintile
- None in most deprived quintile

Lossiemouth – SIMD Quintiles 1 and 2

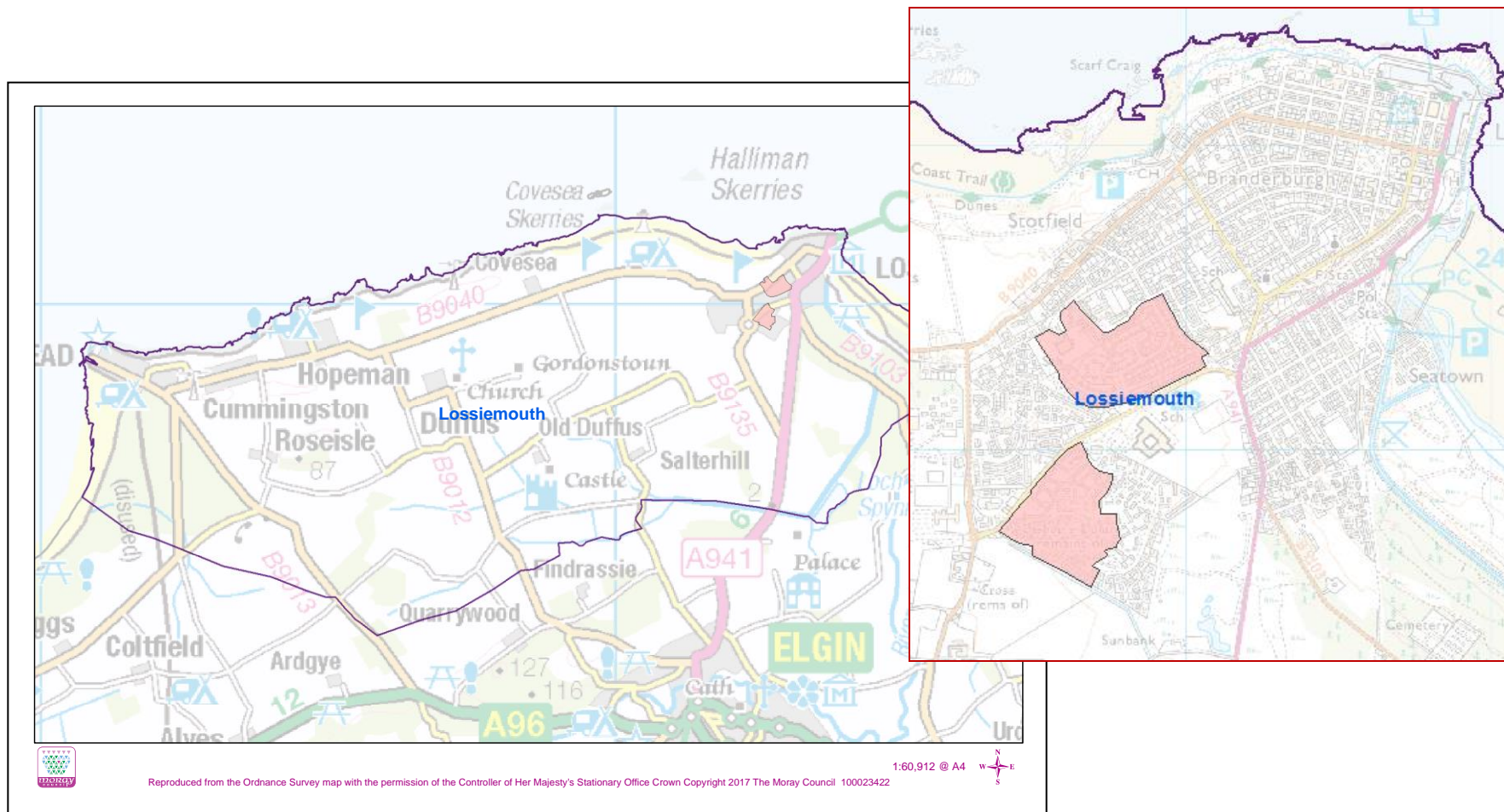
- Employment



- 2 data-zones in second most deprived quintile
- None in most deprived quintile

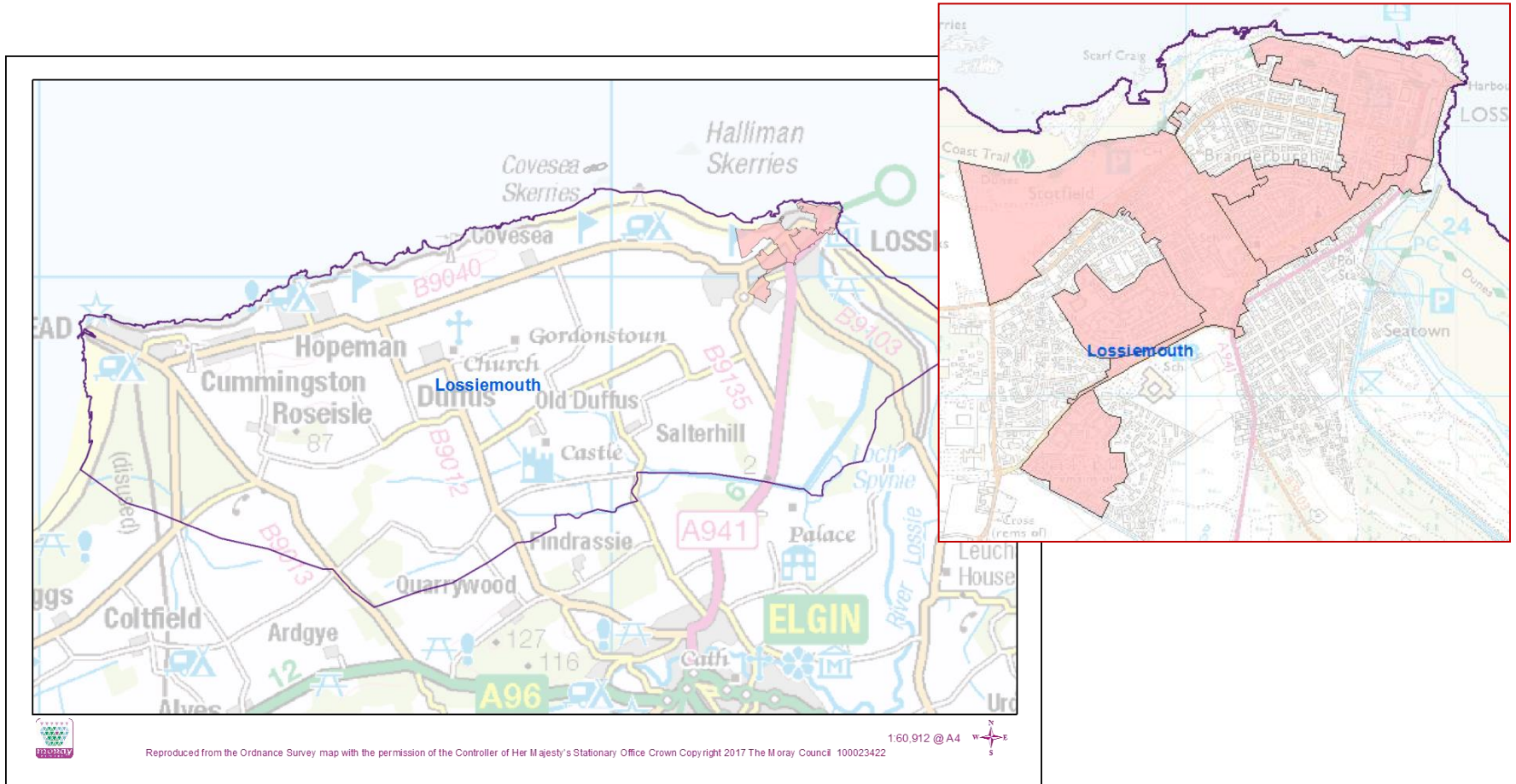
Lossiemouth – SIMD Quintiles 1 and 2

- Income



- 2 data-zones in second most deprived quintile
- None in most deprived quintile

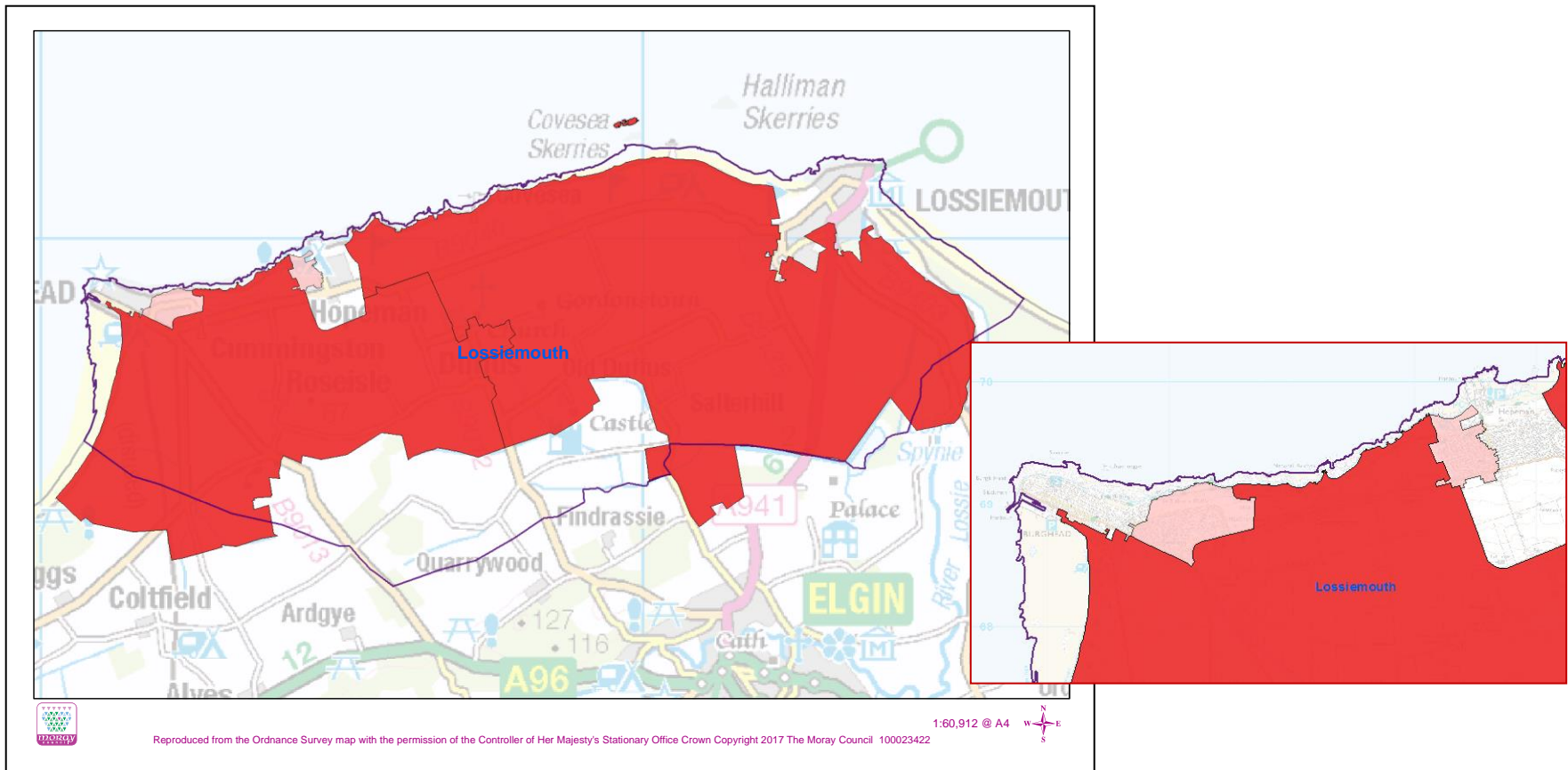
Lossiemouth – SIMD Quintiles 1 and 2 - Crime



- 5 data-zones in second most deprived quintile
- None in most deprived quintile

Lossiemouth – SIMD Quintiles 1 and 2

- Access



- 2 data-zones in second most deprived quintile
- 2 data-zones in most deprived quintile