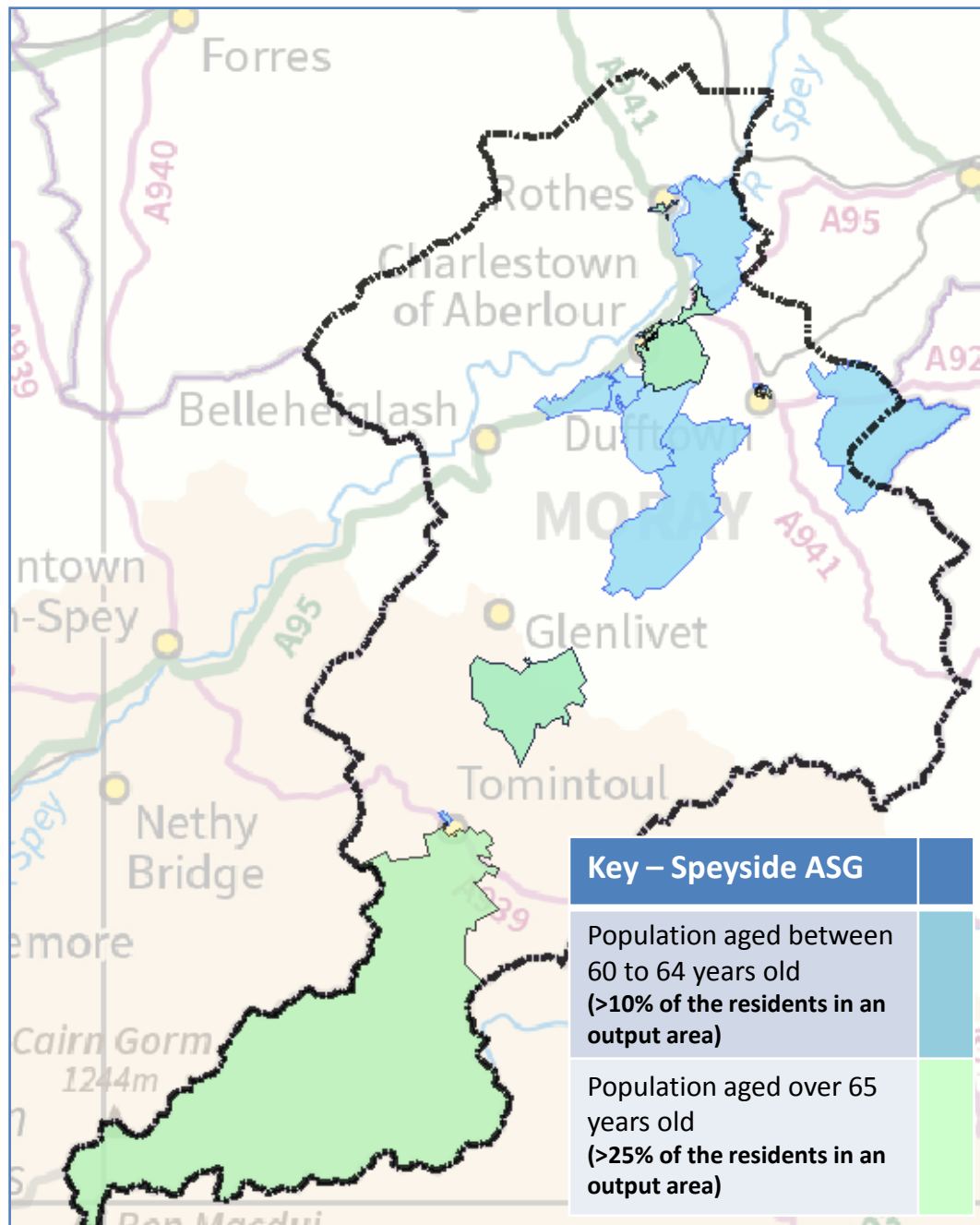
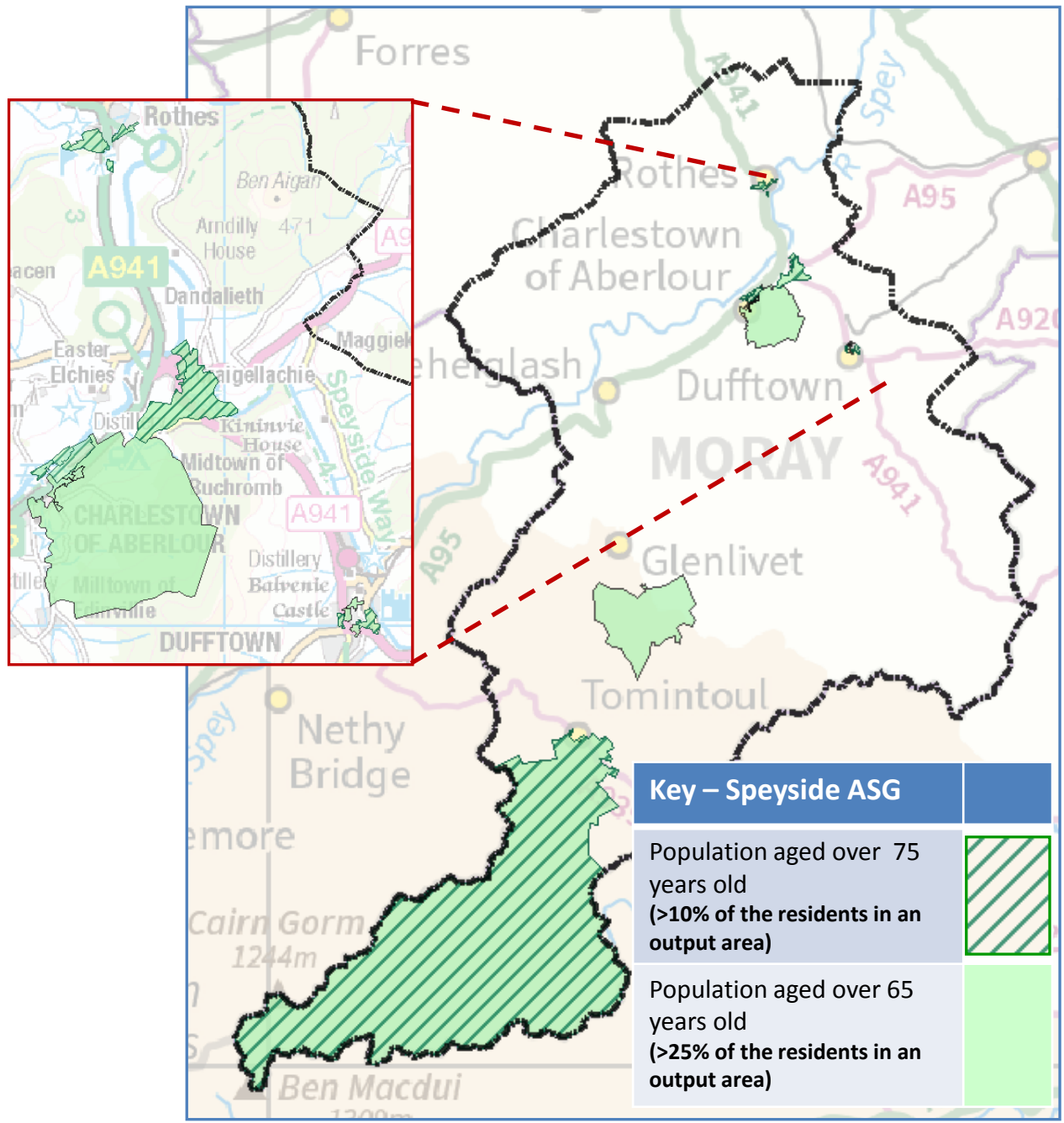


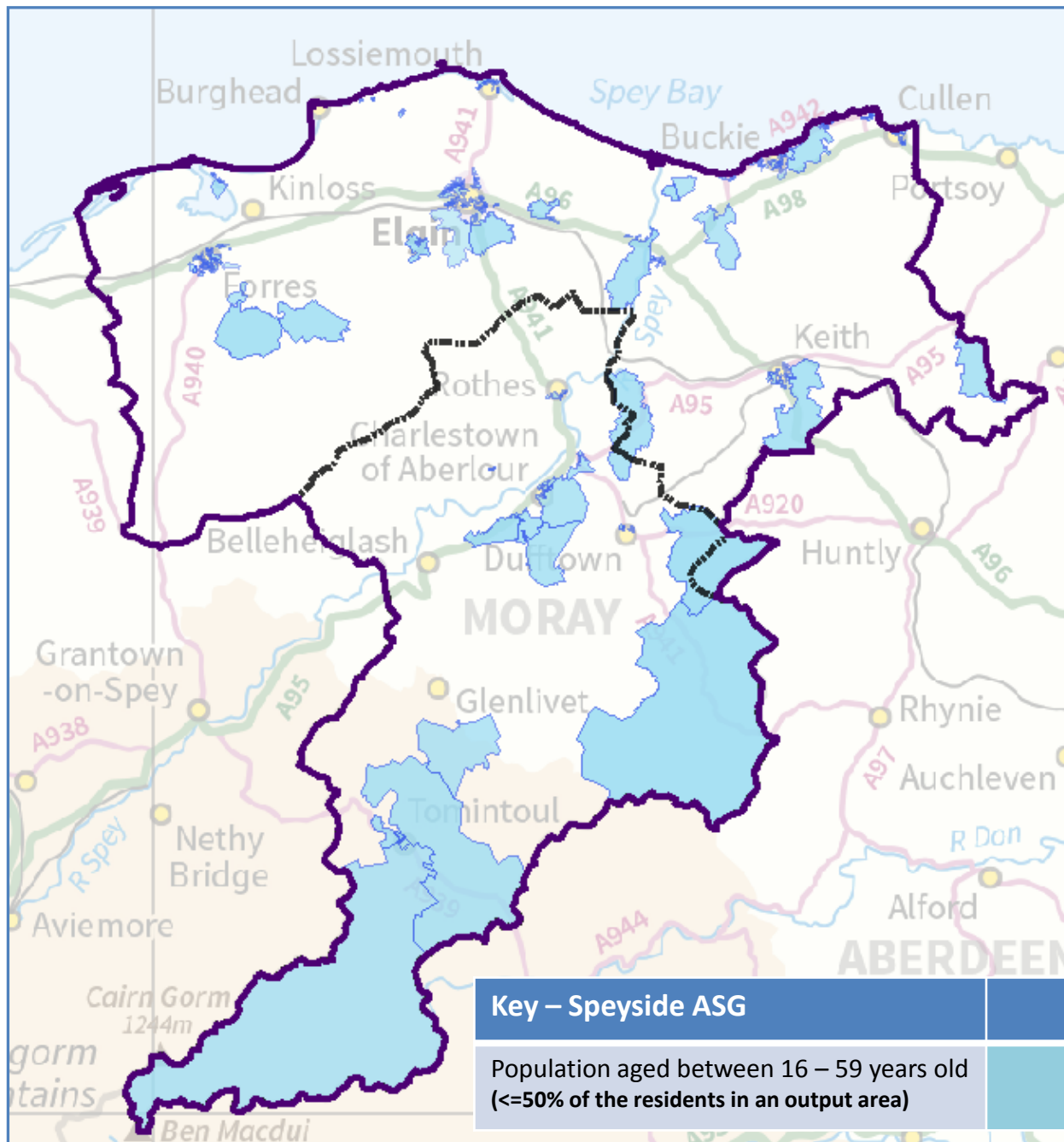
# Speyside ASG

## Maps for Summary

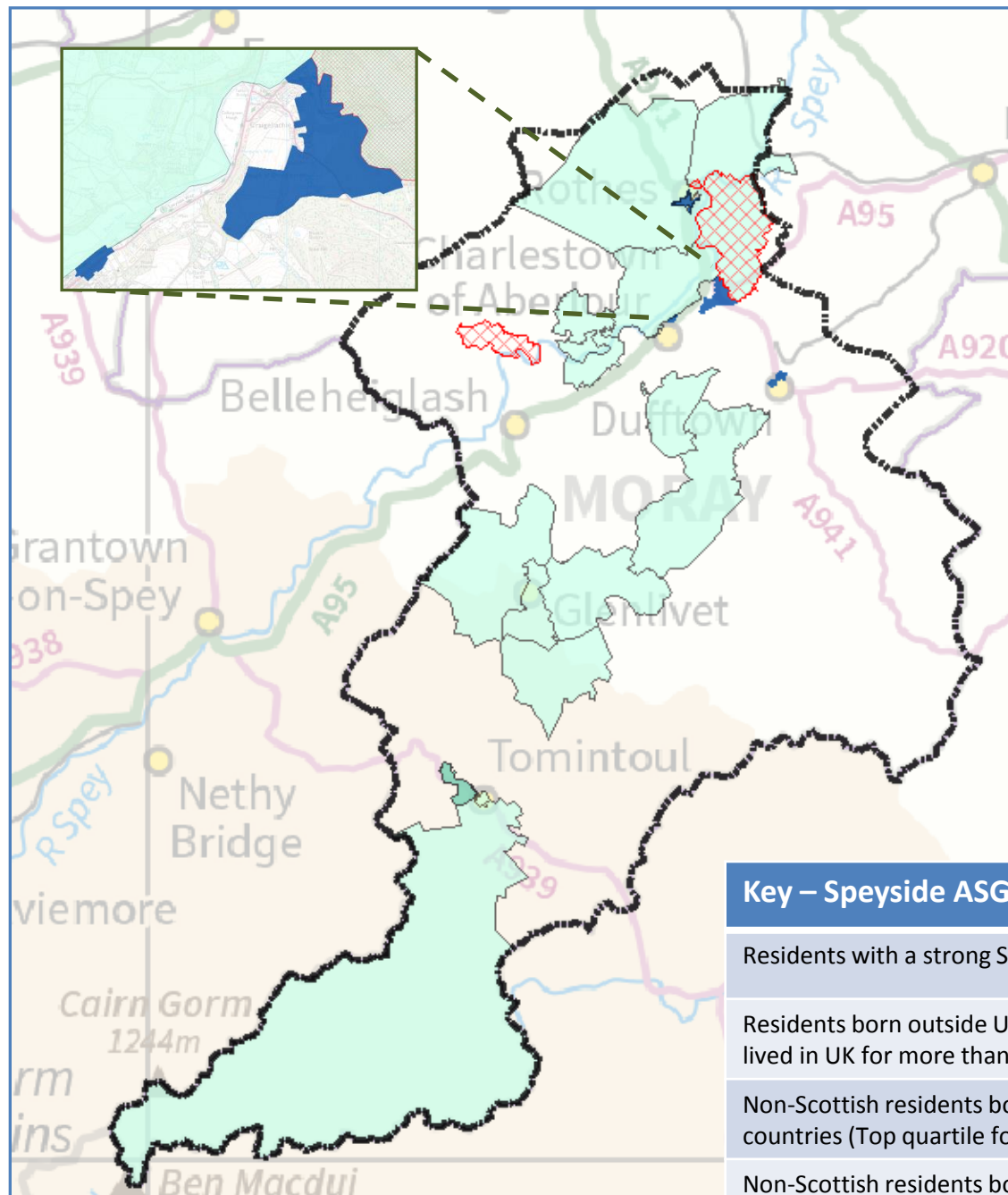
# **SPEYSIDE – POPULATION AGE**

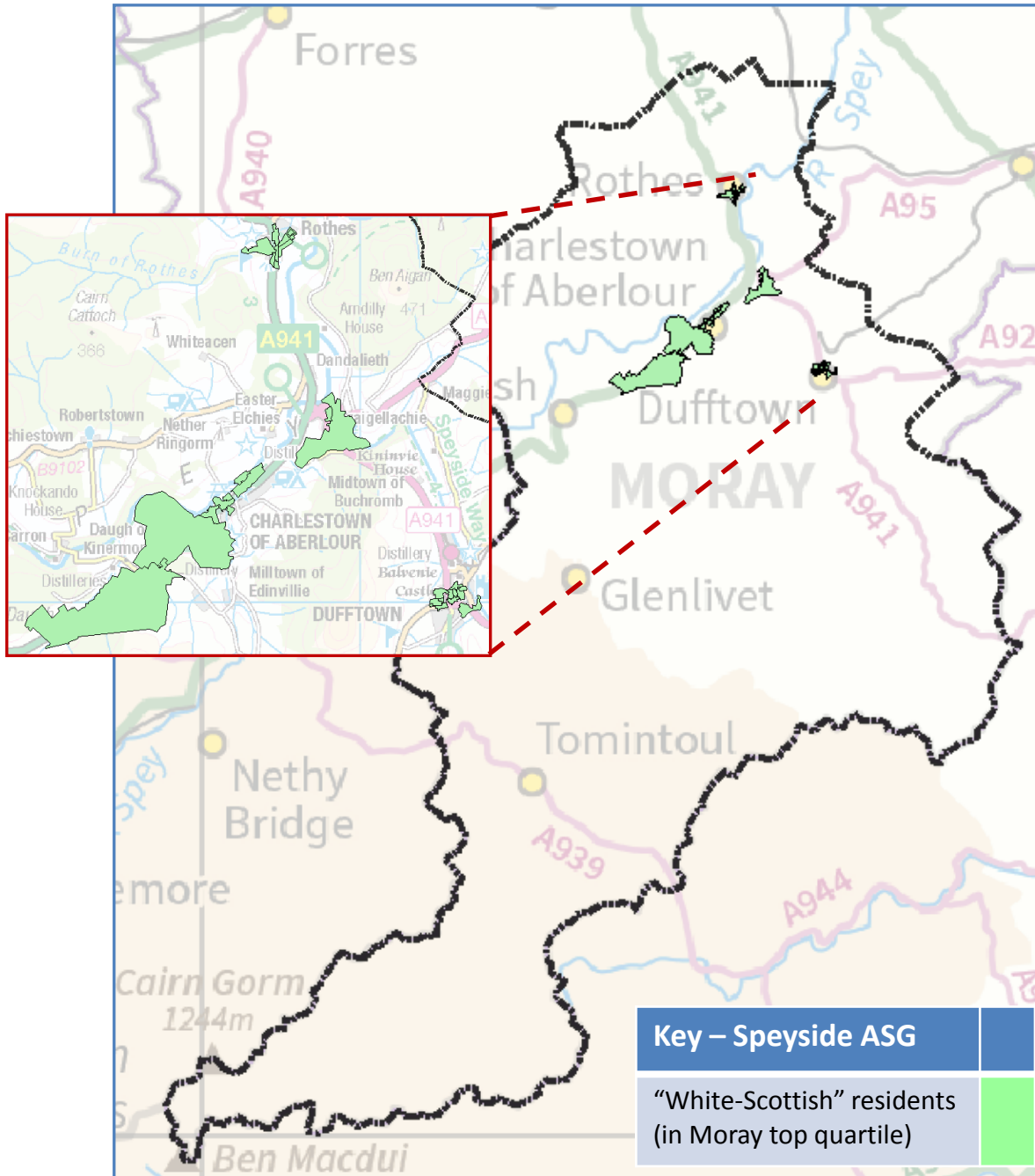






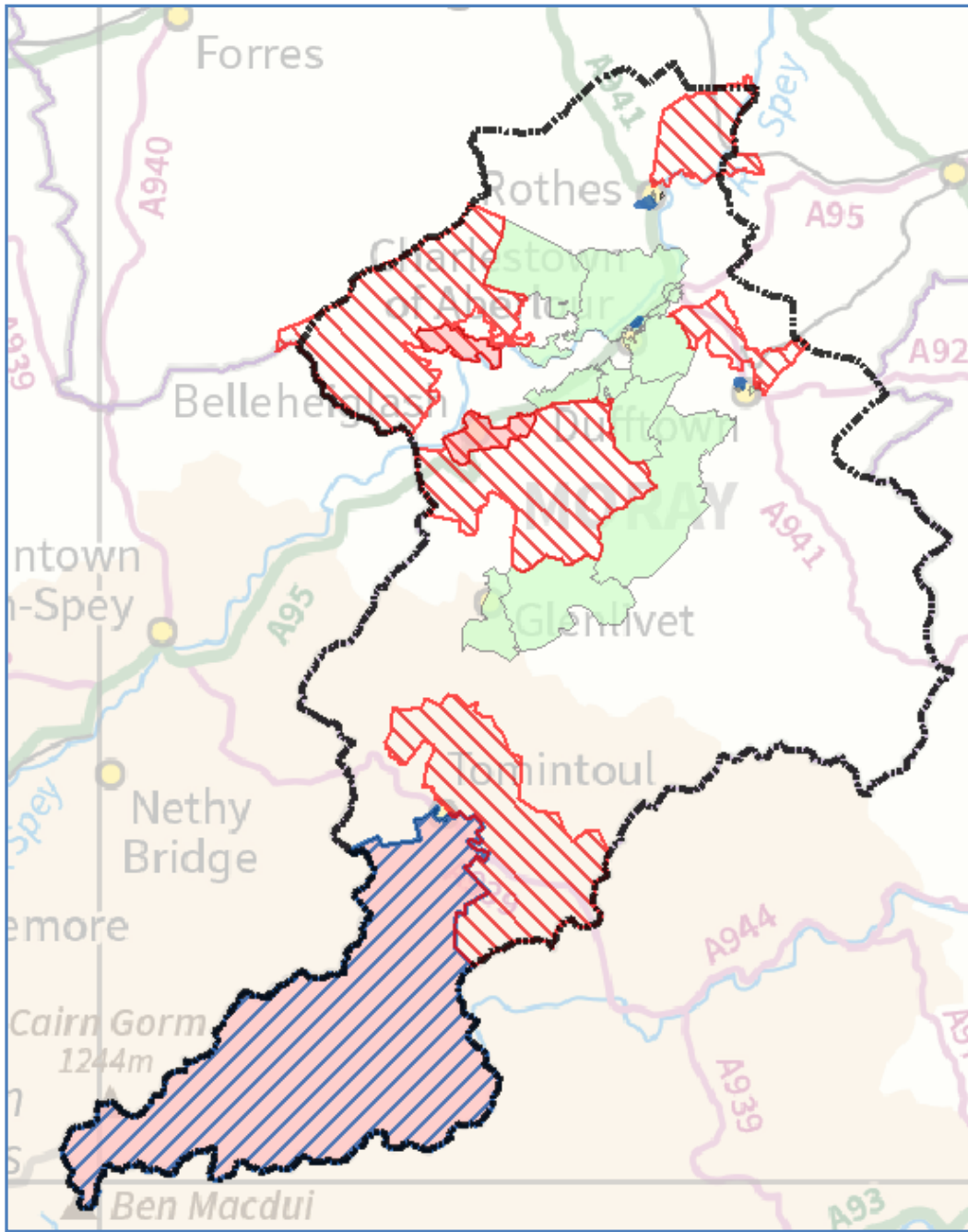
# **SPEYSIDE – IDENTITY**



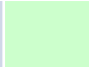
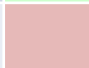






# **SPEYSIDE – HOUSING**

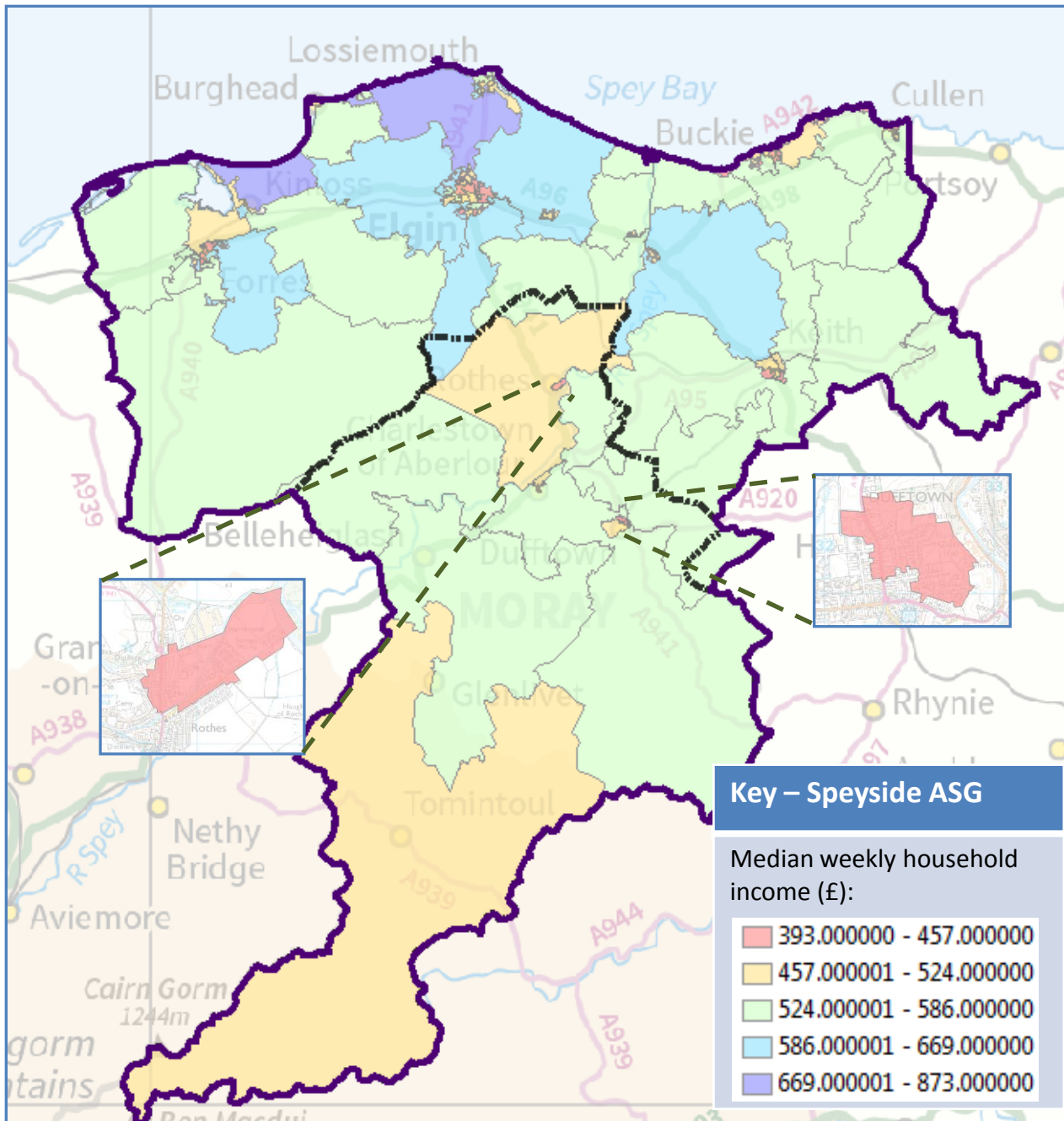


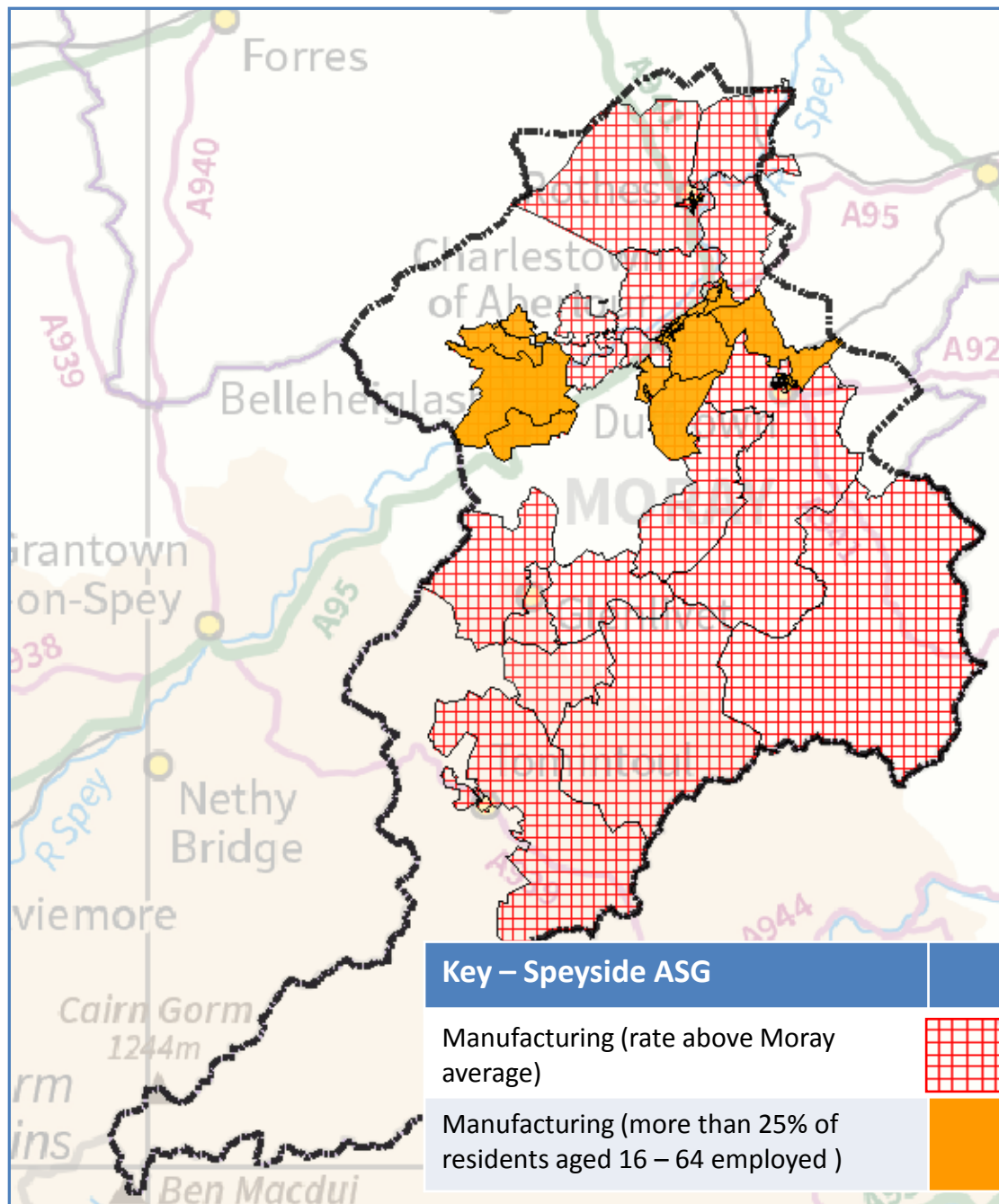
Levels of home ownership across the area are largely in line with Moray. Exceptions to this are Aberlour and Knockando where there are significantly higher percentages of home ownership, and Tomintoul which has much fewer home owners. Instead, Tomintoul has a higher incidence of social/private landlord than is the 'norm' for Moray. In addition Tomintoul, is one of several areas with significantly higher percentages of people living rent free than anywhere else in Moray, suggesting a link between employment in distilleries and tied housing.

Key – Speyside ASG	
Home ownership (above 80%)	
Home ownership (below 40%)	
Above Moray average levels of social/private lets	
Rent free accommodation – top quartile for Moray (above 15%)	

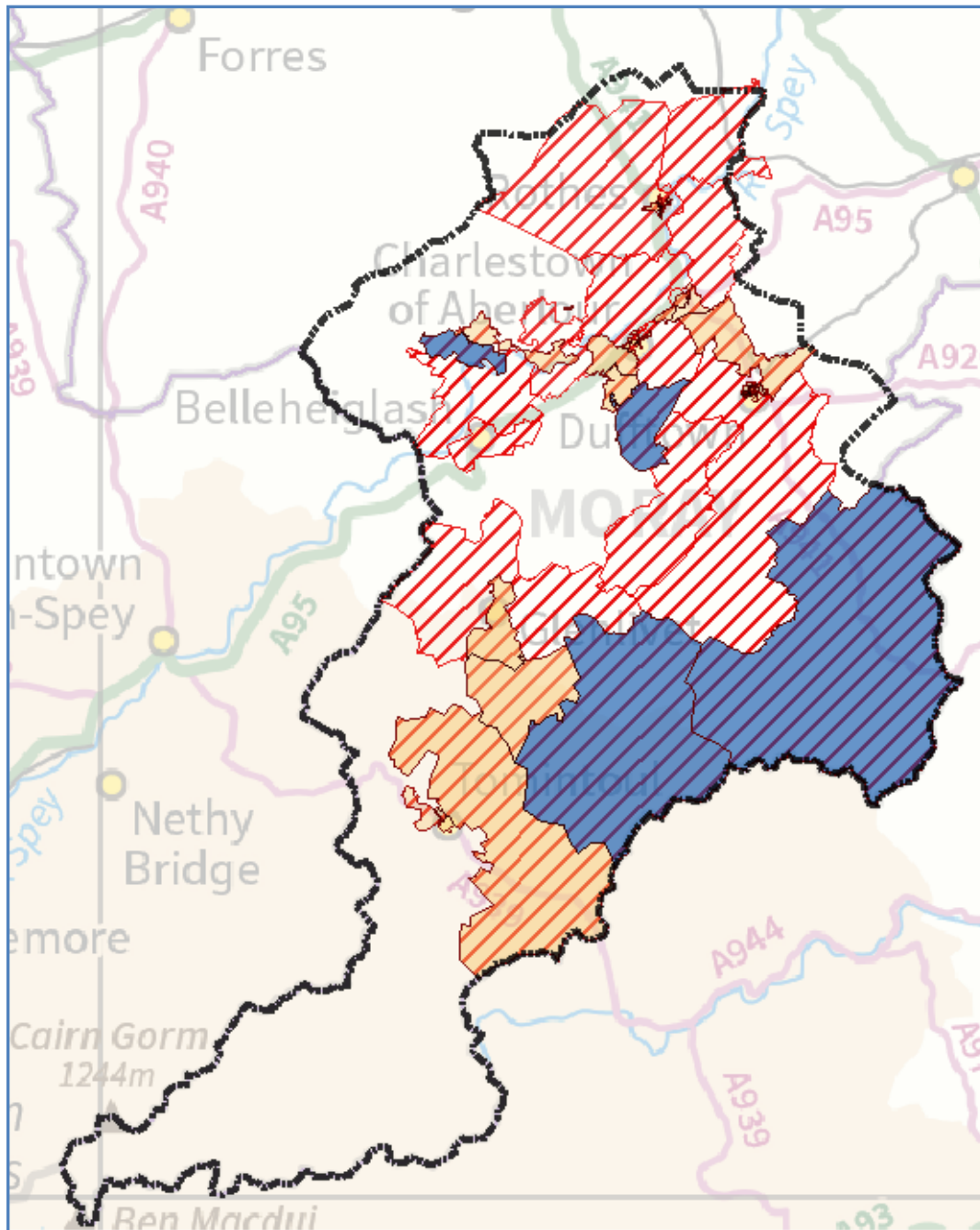





# **SPEYSIDE – ECONOMY AND LABOUR**

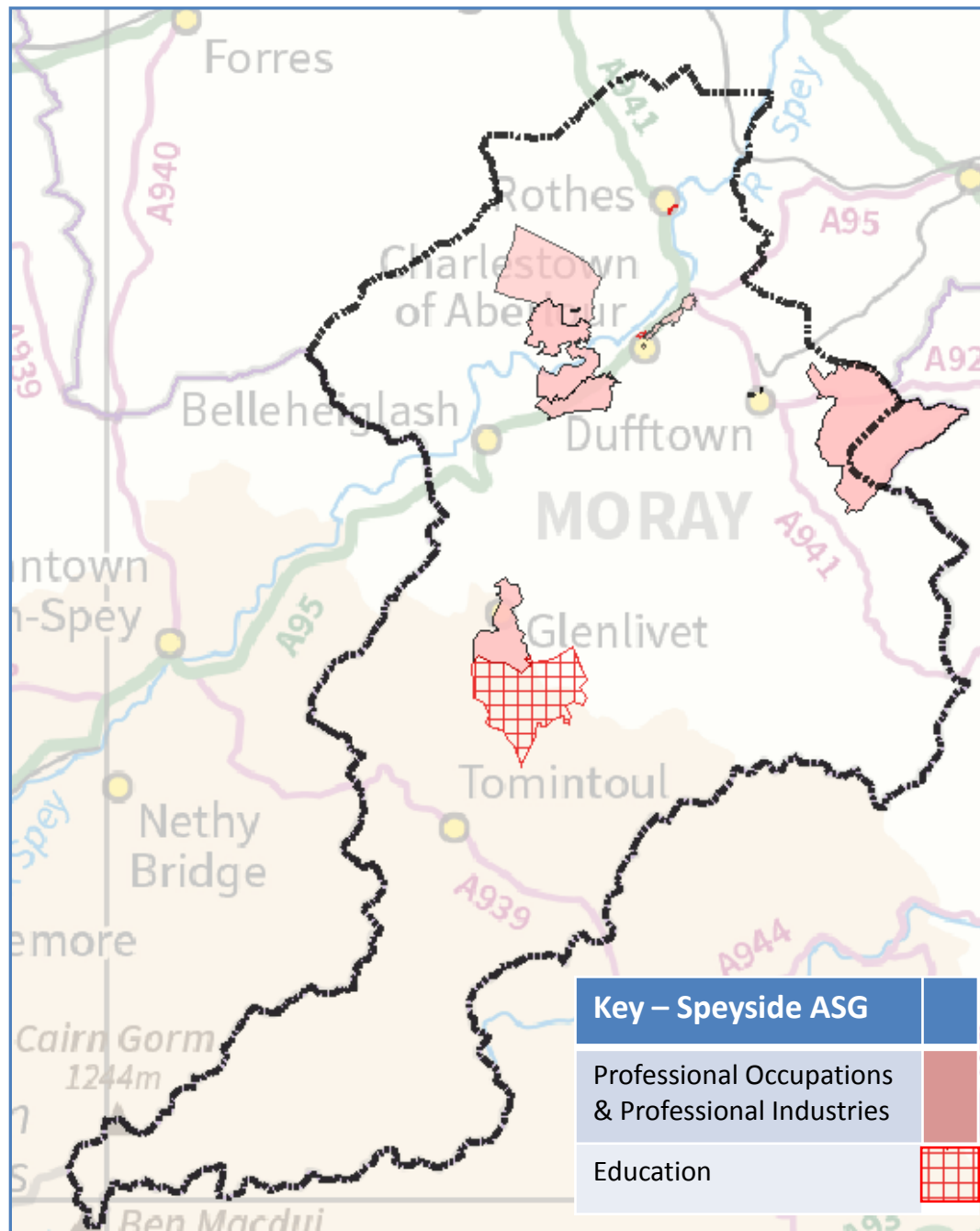




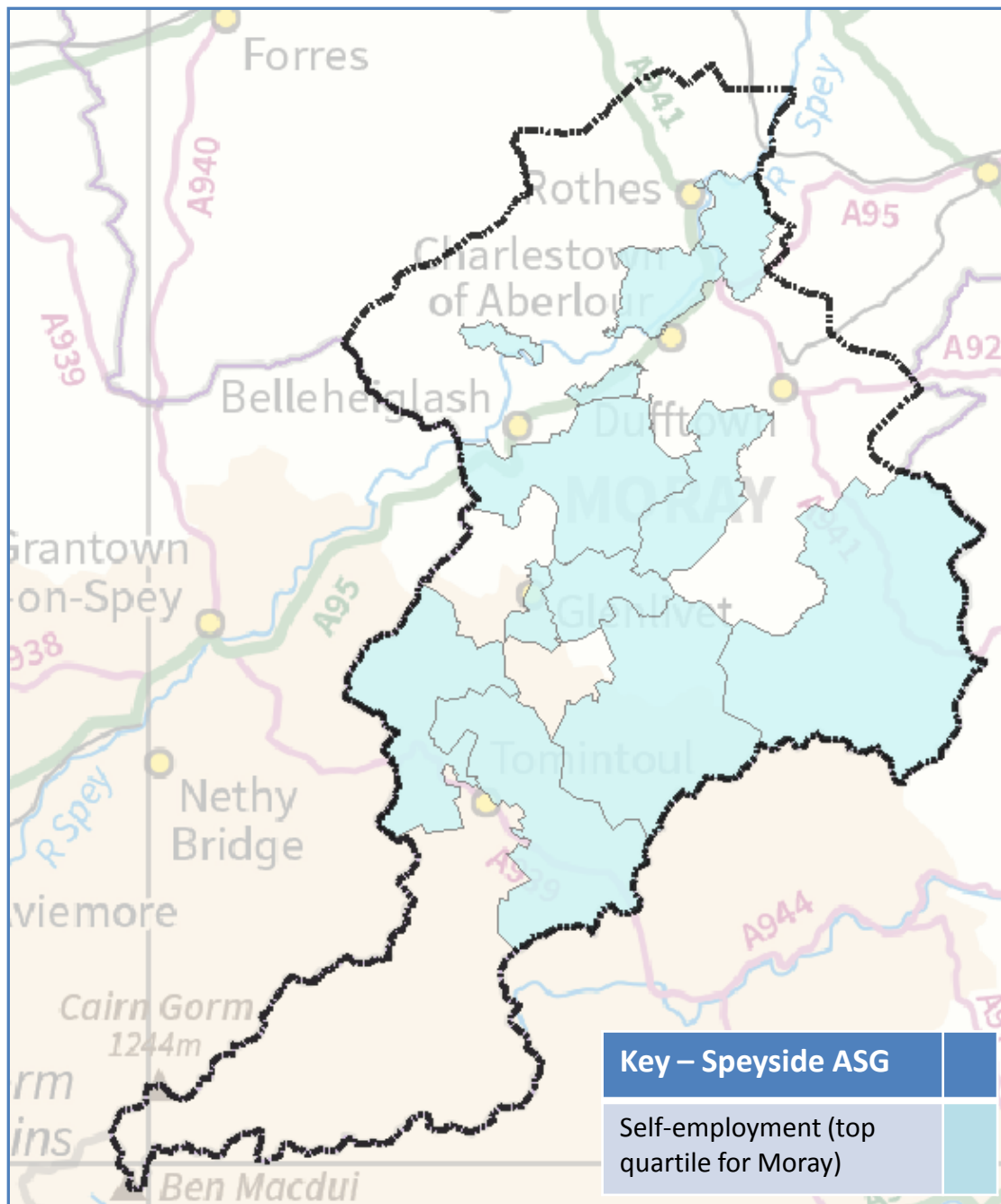




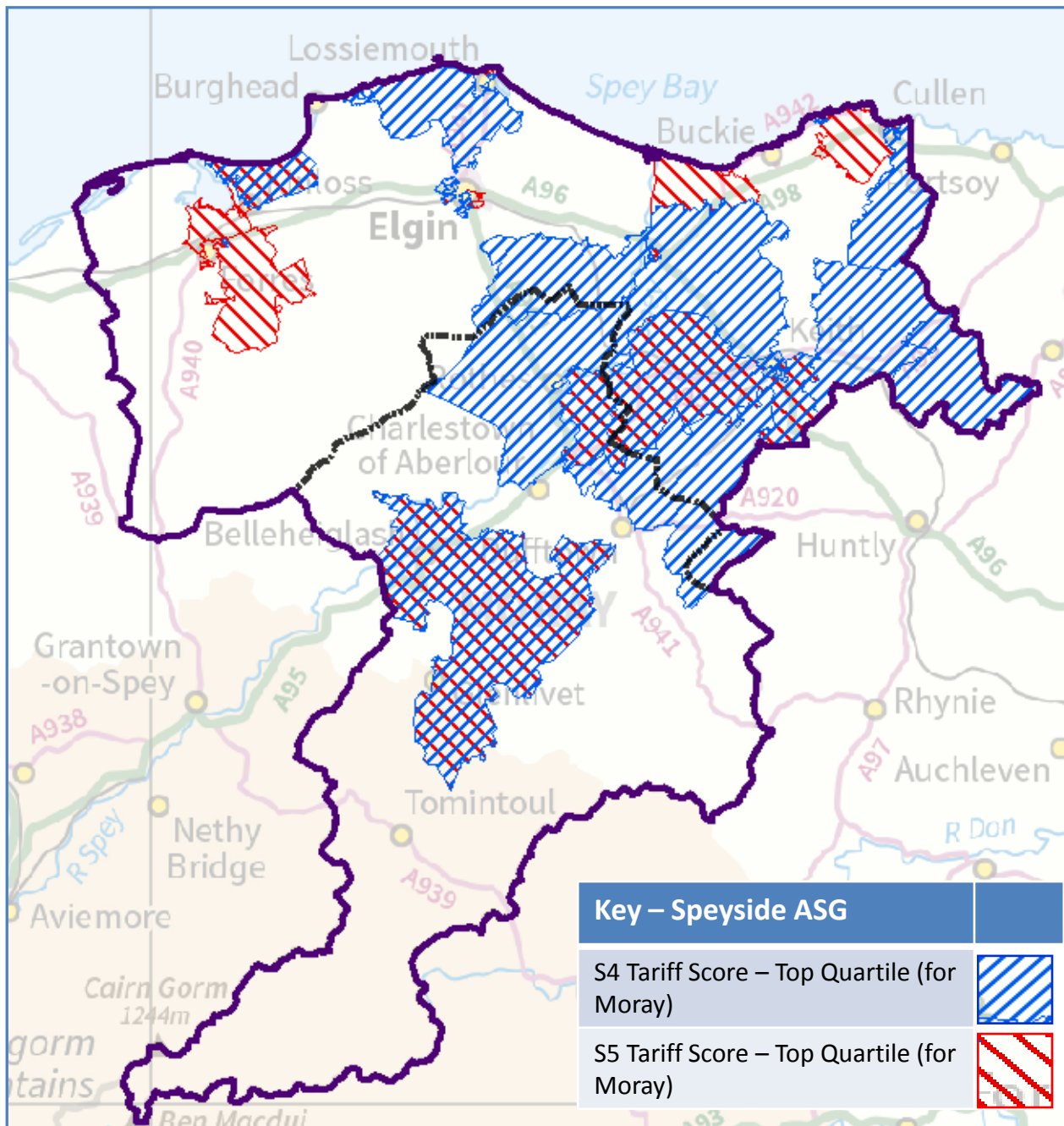
Key – Speyside ASG	
Skilled Trades <i>(Above 30% of working age residents)</i>	
Manufacturing <i>(Above Moray average of 13.4%)</i>	
Elementary occupations <i>(Above 50% of working age residents – Moray average is 12.8%)</i>	

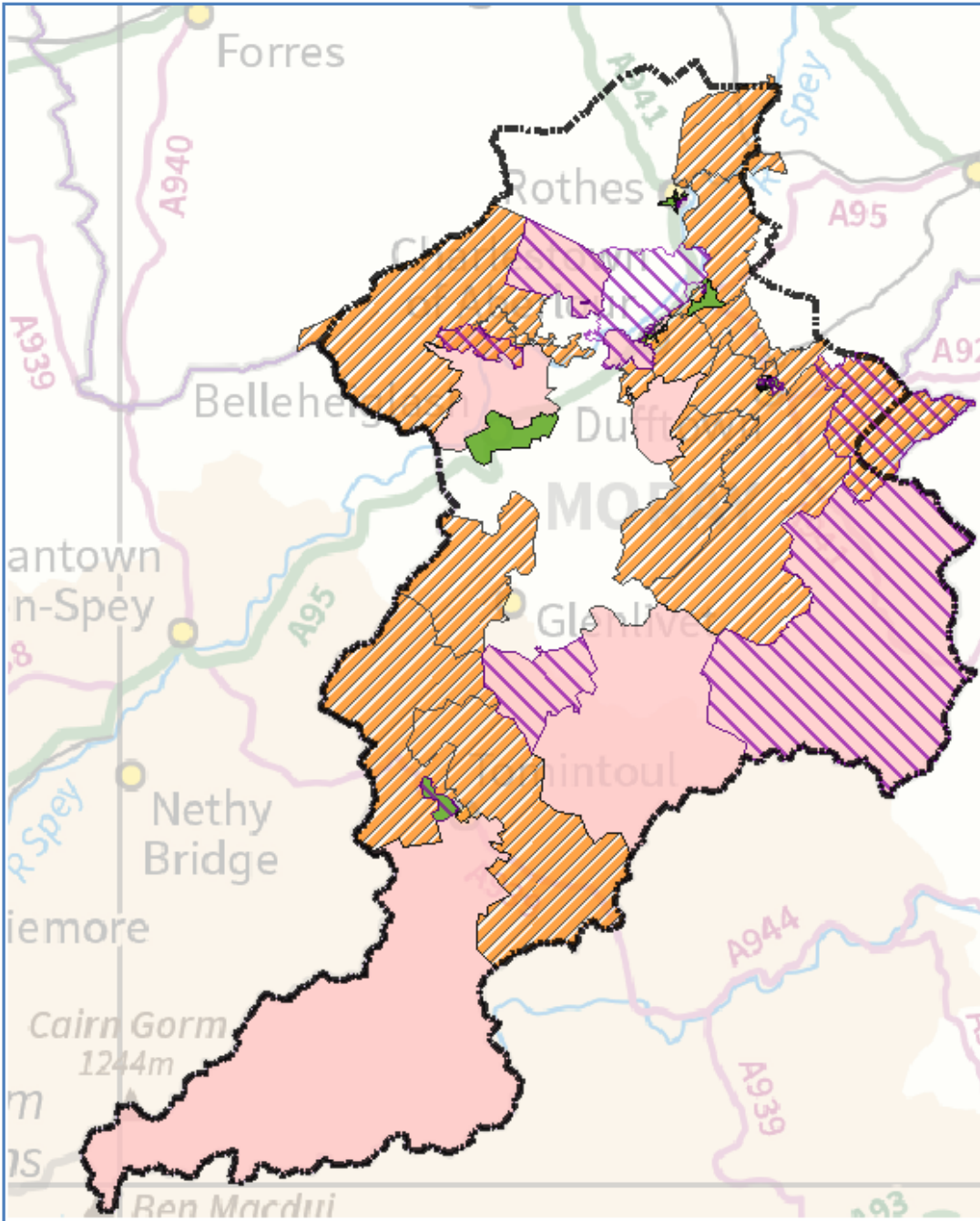










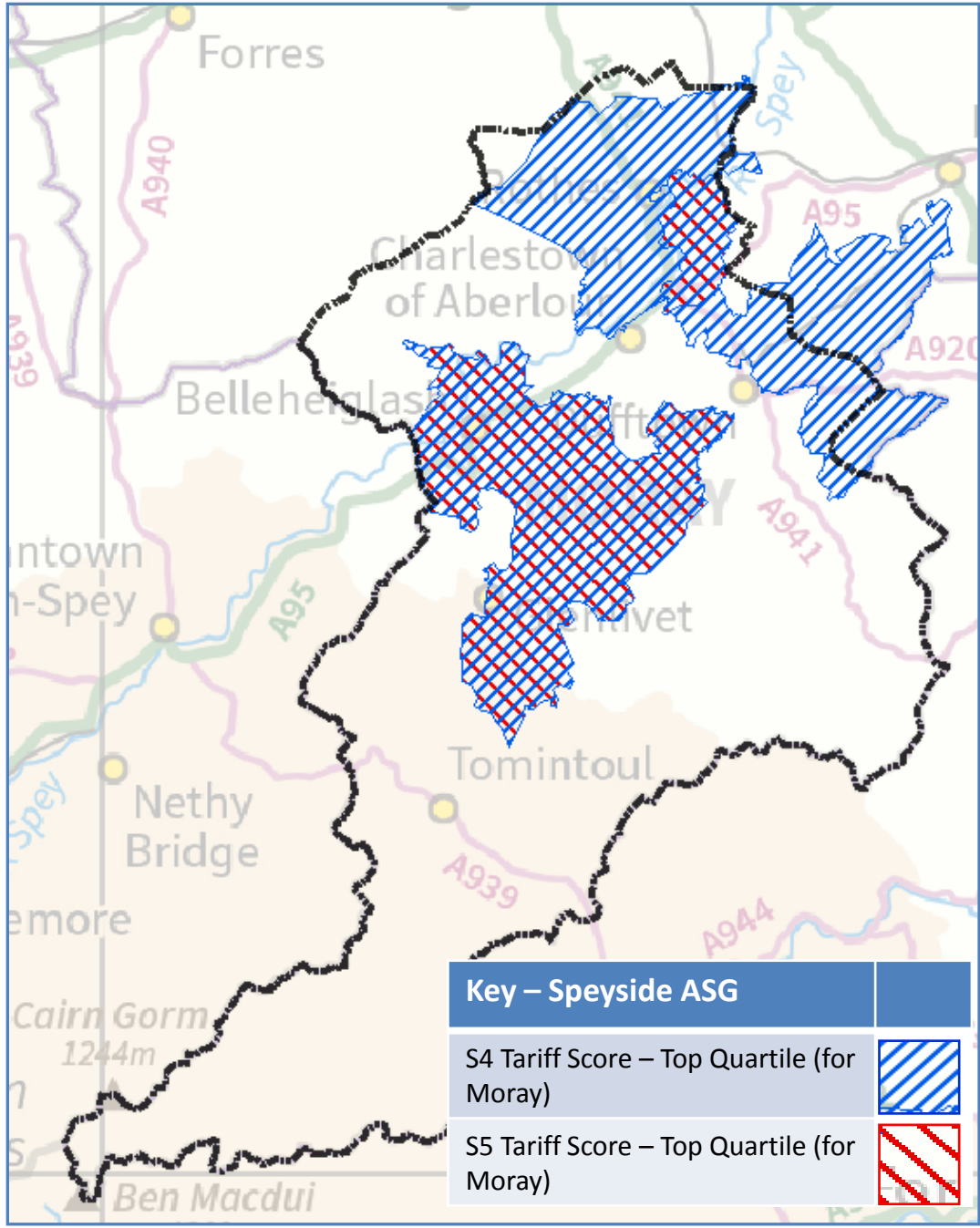
# **SPEYSIDE – EDUCATION**

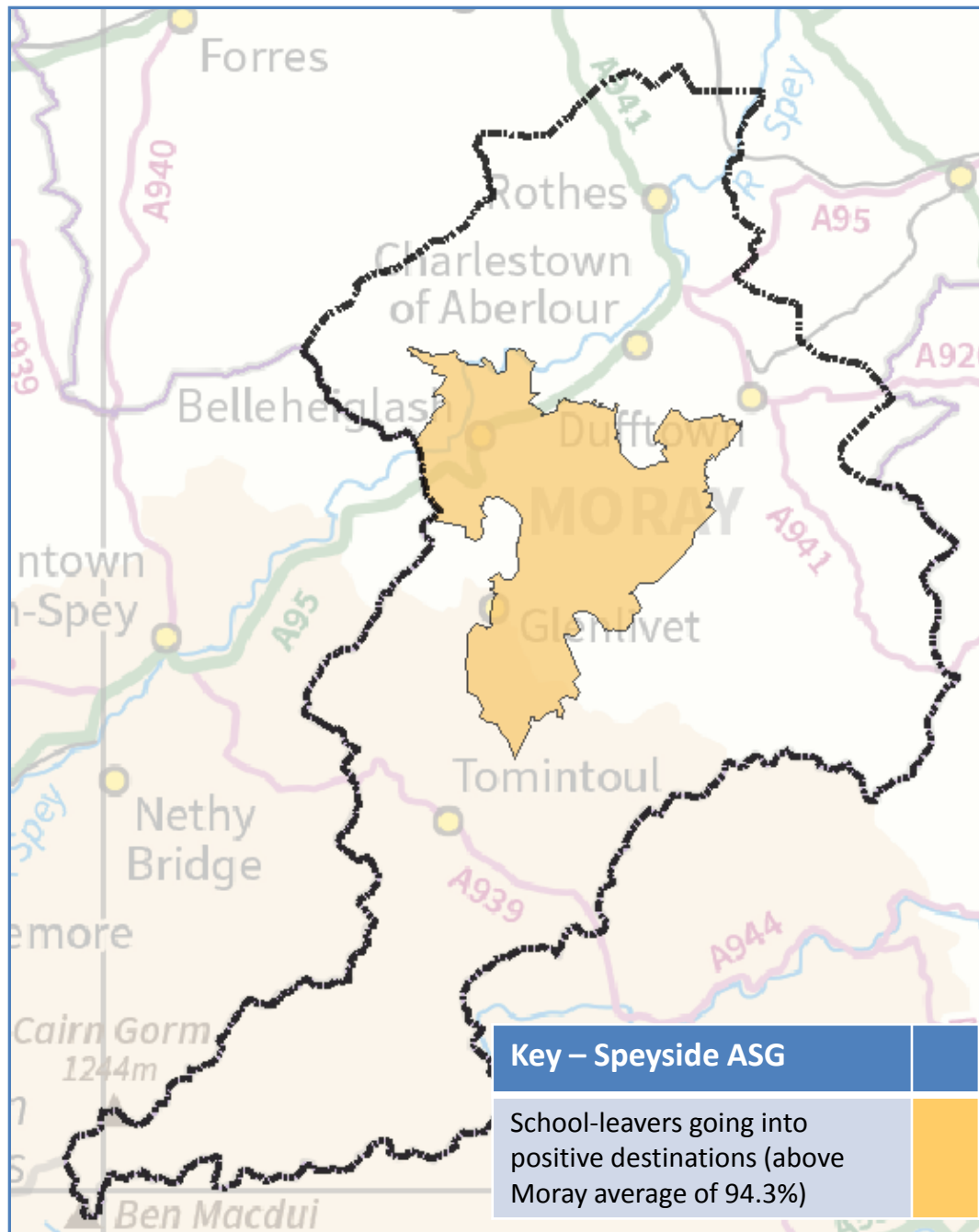




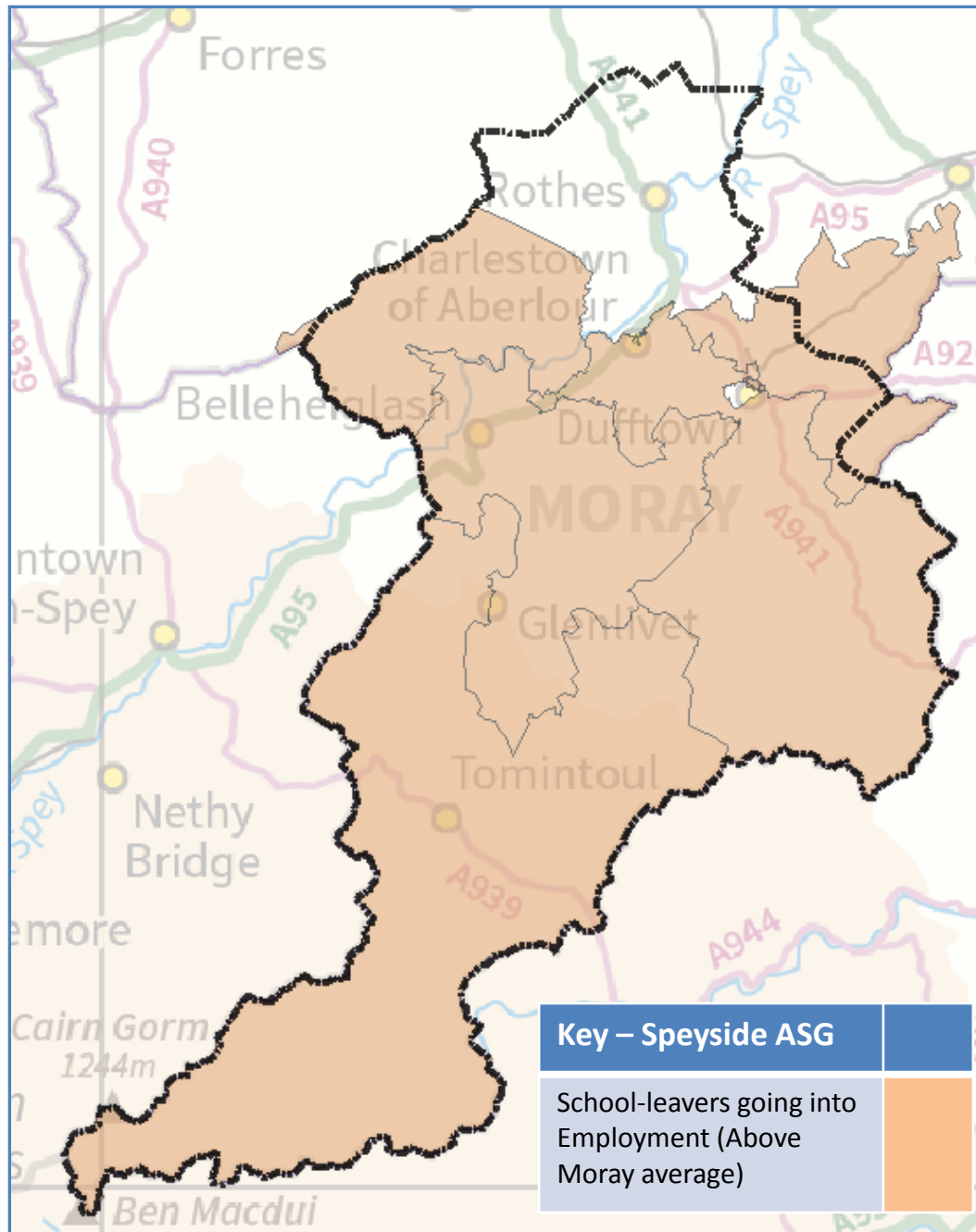
The overall adult population (aged 16-64) of the Speyside ASG hold low levels of qualification and there are areas where significantly higher percentages of adults have no qualifications than is average for Moray. Figures available for the area's three main towns (Aberlour, Dufftown and Rothes) show that there are significantly fewer households where an adult is qualified up to the level of higher exams or where residents aged 16-18 are studying full time. However, it is notable that the four more rural parts of the ASG have higher than average percentages of adults educated to degree level and above.

Key – Speyside ASG	
Percentage of adults with no qualifications (above average)	
Households where an adult is qualified up to the level of higher exams (below Moray average)	
Residents aged 16-18 are studying full time (bottom quartile)	
Households where an adult is educated to degree level and above (above average)	





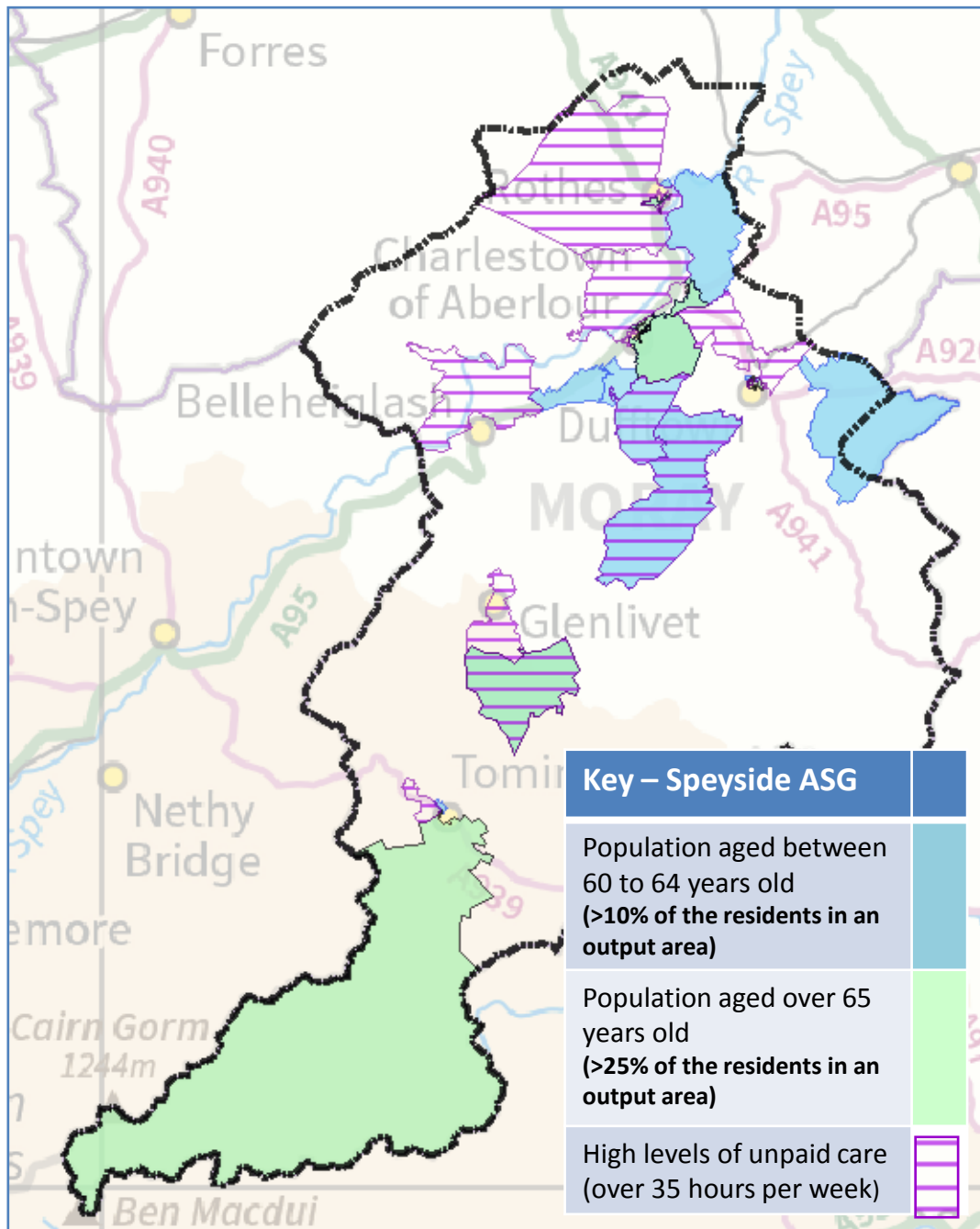


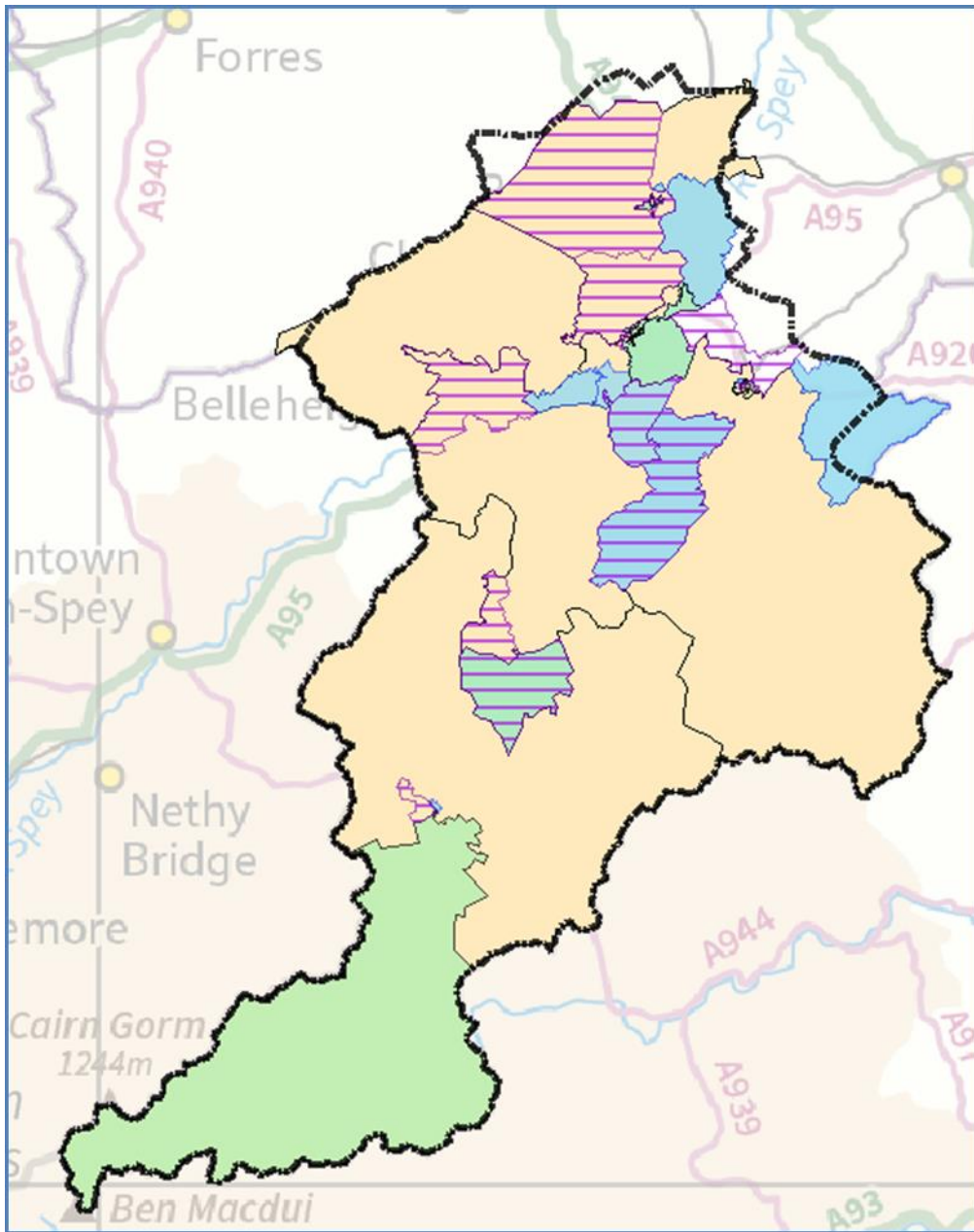


With the exception of Craigellachie, the most common destination for Speyside school leavers is employment with higher percentages entering employment than both the Moray and Scottish averages.

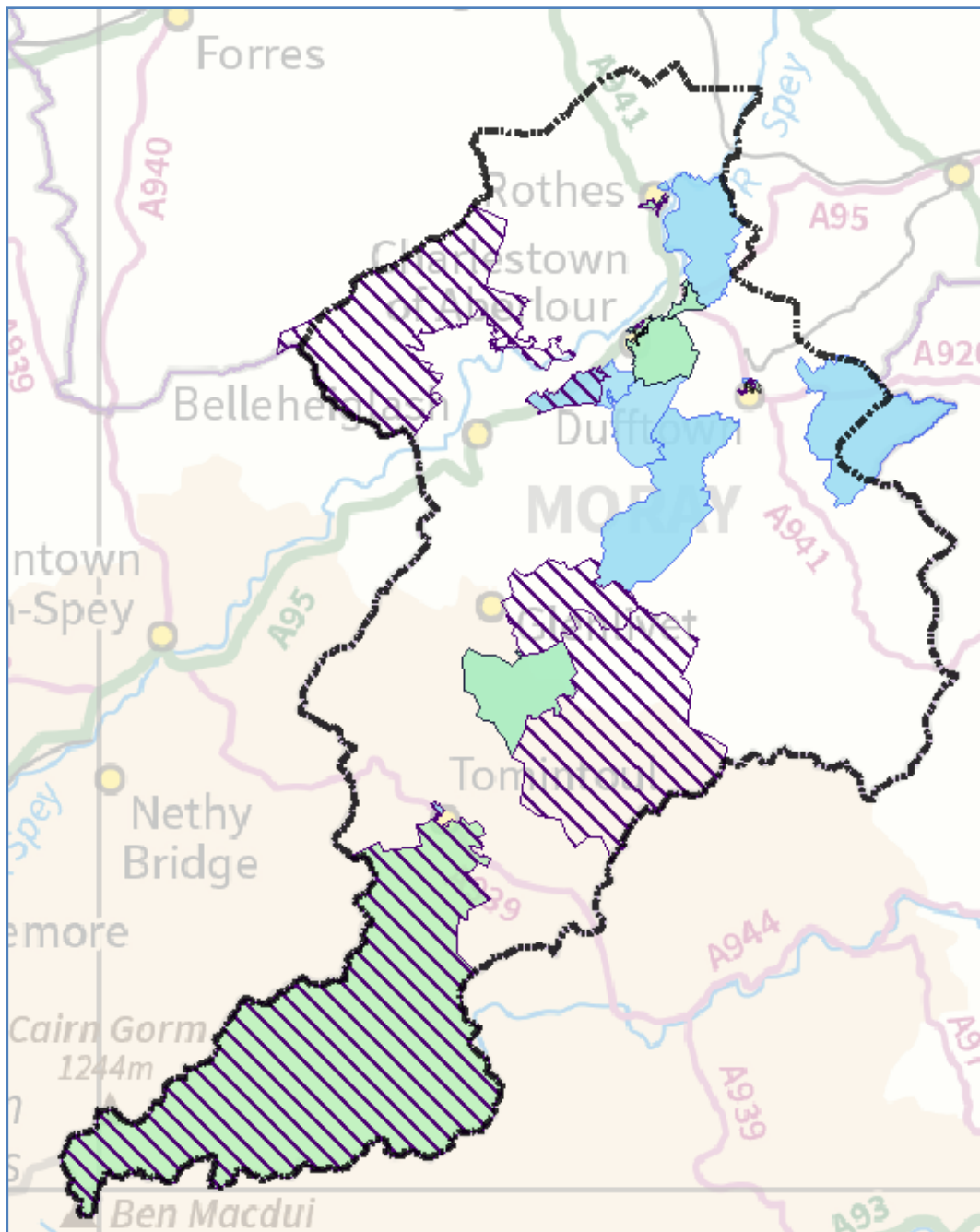
# **SPEYSIDE – HEALTH AND SOCIAL CARE**



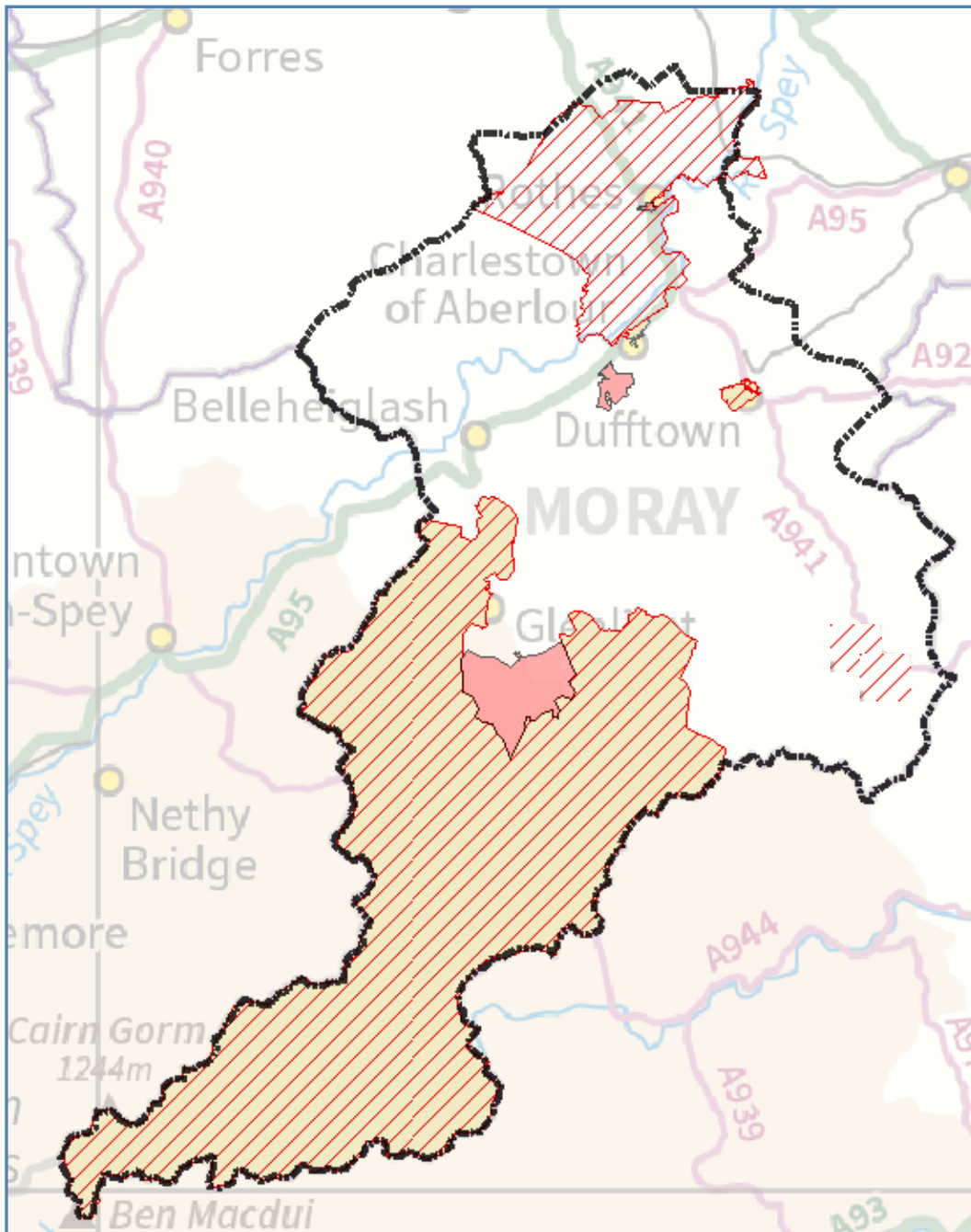




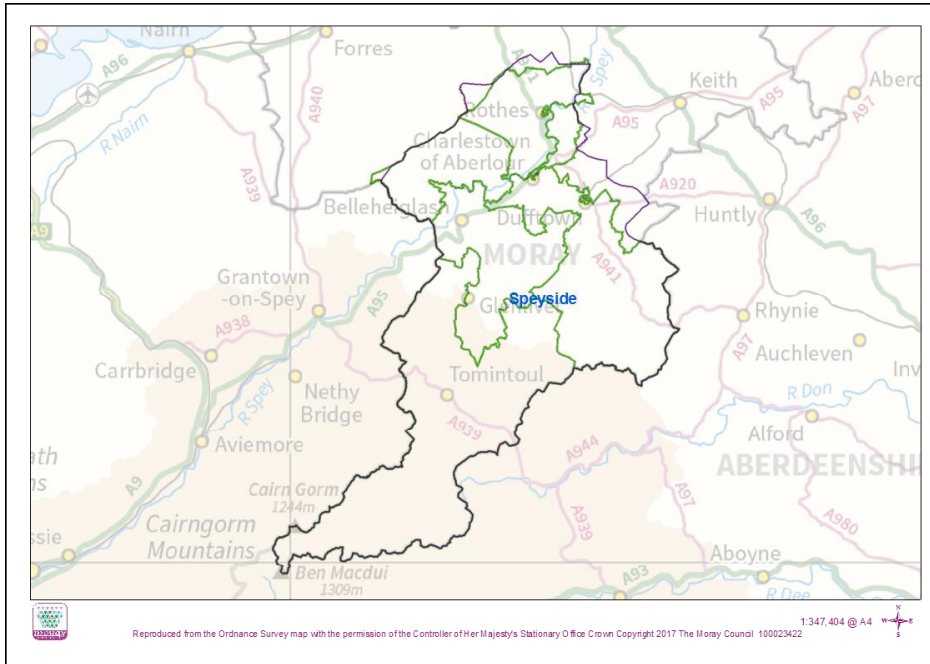
Key – Speyside ASG	
Population aged between 60 to 64 years old (>10% of the residents in an output area)	
Population aged over 65 years old (>25% of the residents in an output area)	
High levels of unpaid care (over 35 hours per week)	
SIMD 2016 most-deprived quintile for access	



Key – Speyside ASG	
Population aged between 60 to 64 years old (>10% of the residents in an output area)	
Population aged over 65 years old (>25% of the residents in an output area)	
No unpaid care	



Key – Speyside ASG	
Over-60s reporting 'Bad' or 'Very Bad' Health, and limited a lot by disability	
Above Moray average rates of emergency hospital admissions - all ages	
Above Moray average rates of emergency hospital admissions - 65 year olds and older	



Data-zones in 1<sup>st</sup> and 2<sup>nd</sup> most deprived quintiles  
10 SIMD 2016 data-zones correspond to the Speyside ASG

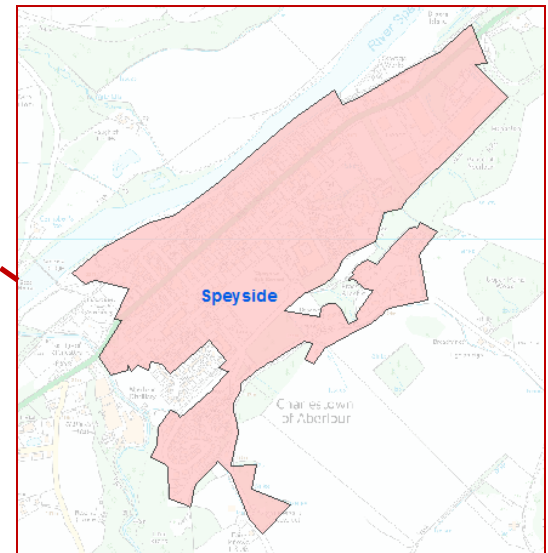
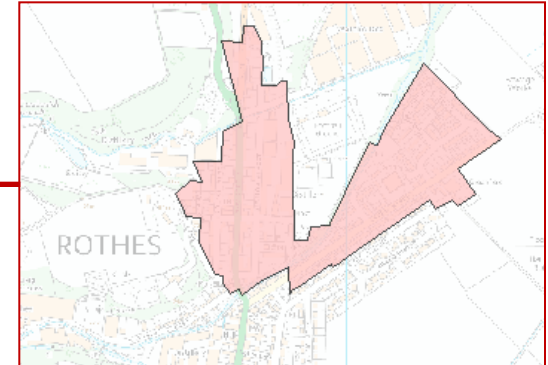
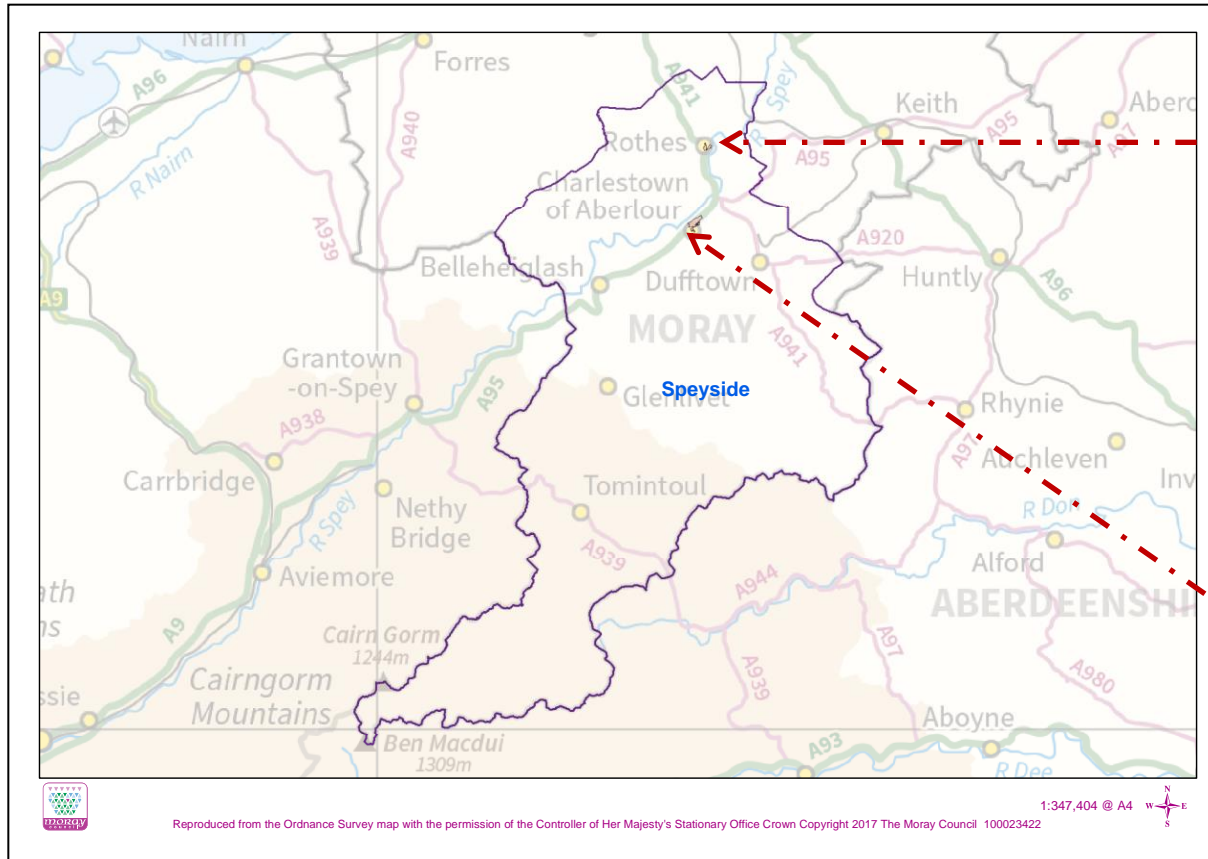
# SPEYSIDE – SIMD DATA



# Speyside – SIMD Quintiles 1 and 2

## - Housing

- 2 data-zones in second most deprived quintile
- None in most deprived quintile





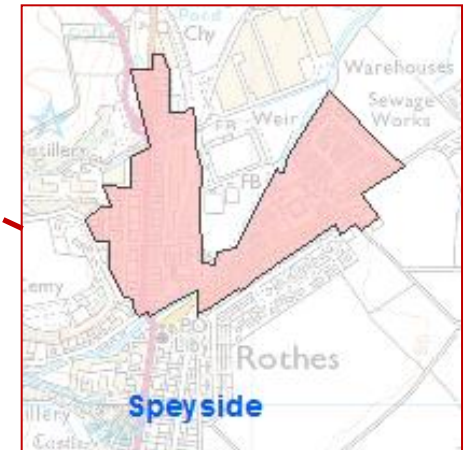
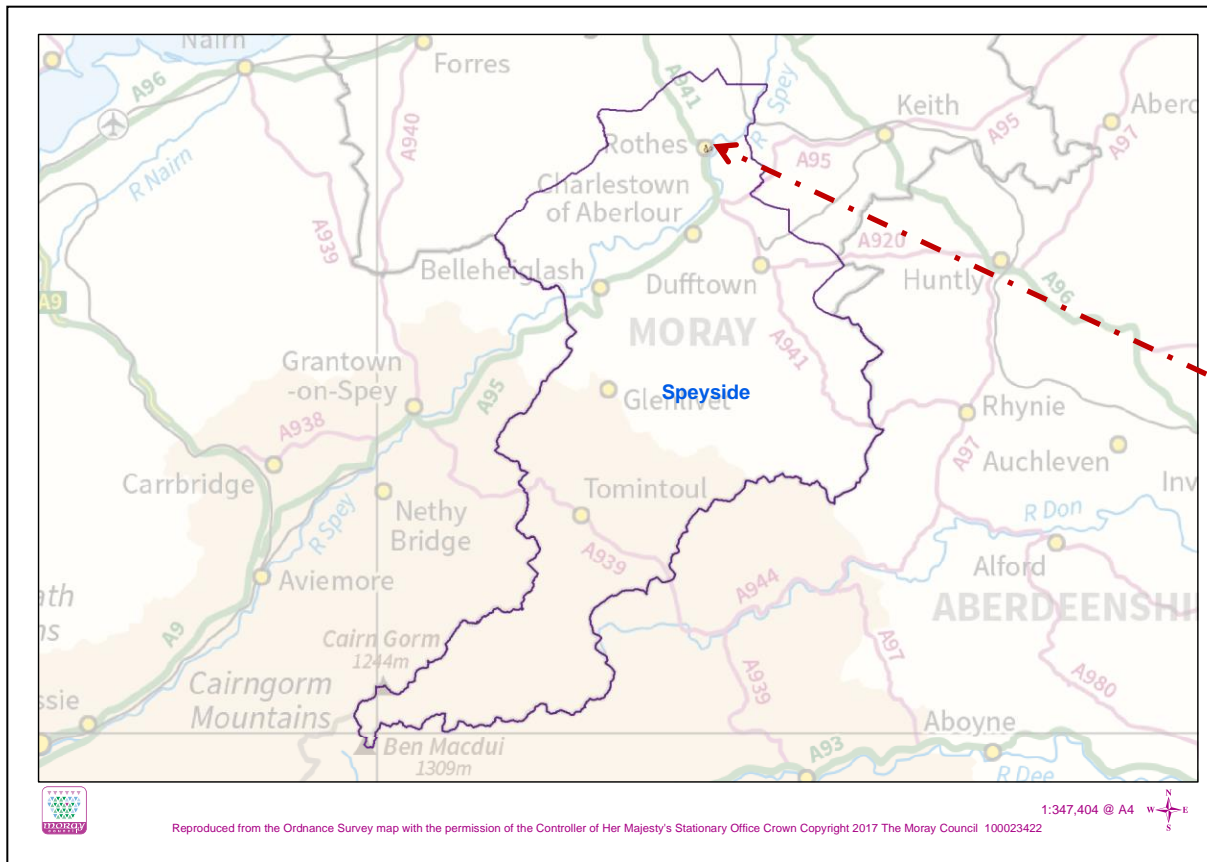
# Speyside – SIMD Quintiles 1 and 2 - Health

- Speyside ASG has no data-zones in most deprived or second most deprived quintile for health



# Speyside – SIMD Quintiles 1 and 2 - Employment

- One data-zone in second most deprived quintile
- None in most deprived quintile



# Speyside – SIMD Quintiles 1 and 2 - Income

- Speyside ASG has no data-zones in most deprived or second most deprived quintile for income

# Speyside – SIMD Quintiles 1 and 2 - Crime

- Speyside ASG has no data-zones in most deprived or second most deprived quintile for crime

# Speyside – SIMD Quintiles 1 and 2 - Access

- No data-zones in second most deprived quintile
- 6 data-zones in most deprived quintile

